

FILE PAGE
LAST REVISED
SEPTEMBER 16, 2002
BRIDGES UPDATED
MAY 13, 2002
ROADS UPDATED
NOVEMBER 2, 2000

- YARD LIMIT
- ABSOLUTE SIG. Ⓚ
- AEI DETECTOR Ⓚ
- CRACKED WHEEL INDICATOR Ⓚ
- DRAG. EOPT. DET. Ⓚ
- HOT BOX DET. Ⓚ
- HIGH, WIDE SHIFTED LOAD DET. Ⓚ
- HIGH WATER DET. Ⓚ
- IMPACT DETECTOR Ⓚ
- INT. SIG. B NO. Ⓚ
- TEMP-WIND GAGE Ⓚ
- POWER SW. Ⓚ
- SPRING SW. Ⓚ
- DEPOT SYMBOL ■
- HISTORICAL MARKER ☆

TOPOGRAPHY
ELEV. TOP OF RAIL AT STATION M.P.
CONTROL POINTS & STATION NAMES
CIRCULAR 7 NUMBER
MILE POST LOCATION
LGTH (CLEAR) OF SIDING

MAX. GRADE PERCENT (SUB GRADE)

SLIDE WARNING —
EL. ABOVE SEA LEVEL
FIBER OPTICS ~~~~~
C. T. C. - - - -
A. B. S. - - - -

NO. 1 TRACK SPEED ALLOWANCE
NO. 2 TRACK

AUTH. SUPER ELEV.

TOTAL ANGLE

ALIGNMENT & FLANGE LUBRICATORS

DEGREE OF CURVE

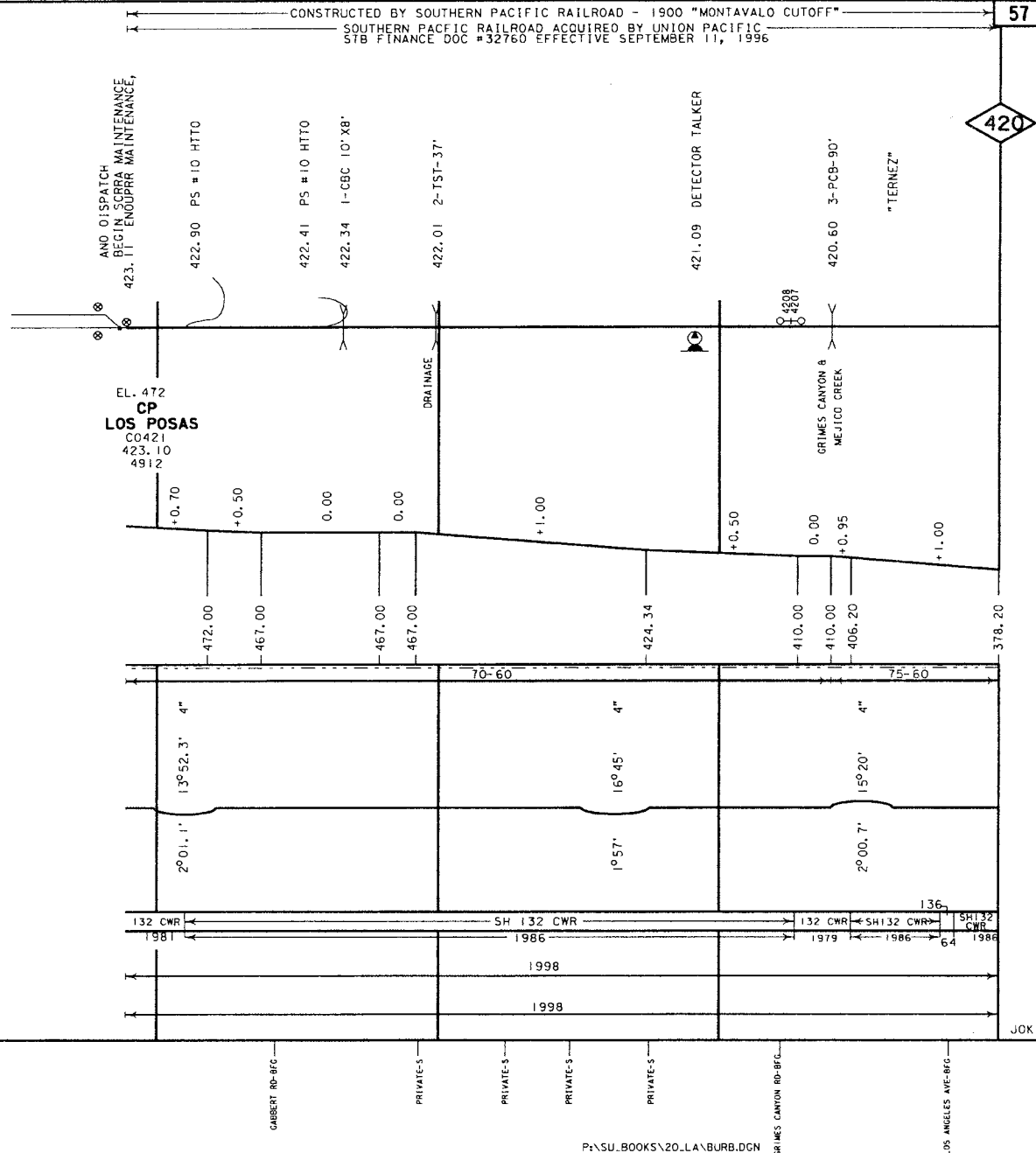
SIDING
RAIL
NO. 1 TRACK
NO. 2 TRACK

SURFACING & LINING
SIDING
NO. 1 TRACK
NO. 2 TRACK

TIE GANG
SIDING
NO. 1 TRACK
NO. 2 TRACK

GRADE XING DATA
X-BUCK
BELL
FLASHER
GATES
WIG WAG
TRAFFIC SIGNAL
STOP SIGN
CANTILEVER

M.P. 423.11 EQUATION
M.P. 426.40



FILE PAGE
LAST REVISED
SEPTEMBER 16, 2002
BRIDGES UPDATED
MAY 13, 2002
RD XING UPDATED
NOVEMBER 2, 2000

CONSTRUCTED BY SOUTHERN PACIFIC RR - 1900 "MONTALVO CUTOFF"
SOUTHERN PACIFIC RAILROAD ACQUIRED BY UNION PACIFIC - STB FINANCE DOC #32760 EFFECTIVE SEPTEMBER 11, 1996

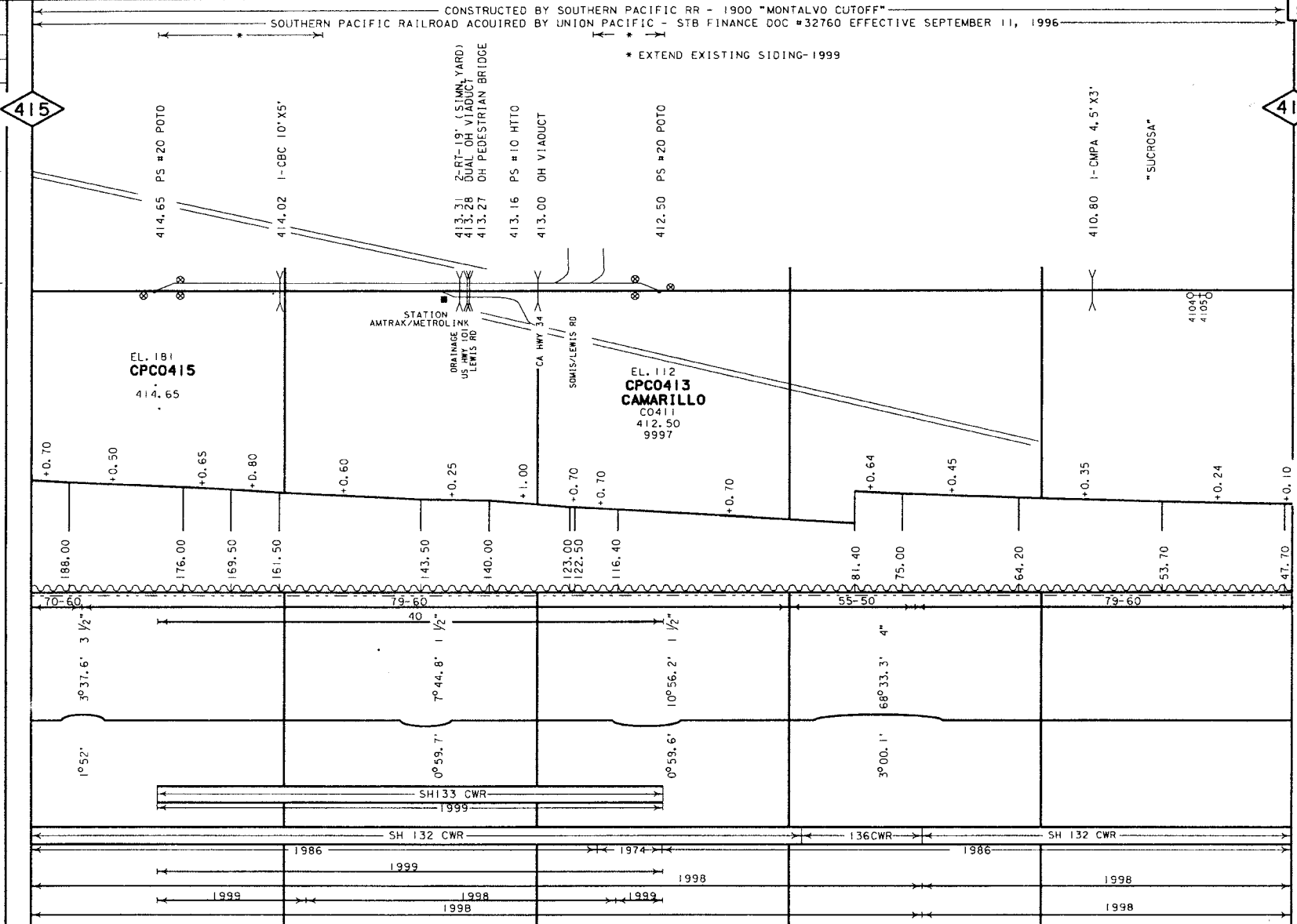
- YARD LIMIT
- ABSOLUTE SIG.
- AEI DETECTOR
- CRACKED WHEEL INDICATOR
- DRAG, EQPT. DET.
- HOT BOX DET.
- HIGH, WIDE SHIFTED LOAD DET.
- HIGH WATER DET.
- IMPACT DETECTOR
- INT. SIG. & NO.
- TEMP-WIND GAGE
- POWER SW.
- SPRING SW.
- DEPOT SYMBOL
- HISTORICAL MARKER
- TOPOGRAPHY
- ELEV. TOP OF RAIL AT STATION M.P.
- CONTROL POINTS & STATION NAMES
- CIRCULAR 7 NUMBER MILE POST LOCATION
- LGTH (CLEAR) OF SIDING
- MAX. GRADE PERCENT (SUB GRADE)
- SLIDE WARNING
- EL. ABOVE SEA LEVEL
- FIBER OPTICS
- C. T. C.
- A. B. S.
- SPEED ALLOWANCE
- AUTH. SUPER ELEV.
- TOTAL ANGLE
- ALIGNMENT & FLANGE LUBRICATORS
- DEGREE OF CURVE
- RAIL SIDING
- RAIL MAIN
- SURFACING & LINING
- SIDING MAIN
- TIE GANG SIDING
- MAIN



GRADE XING DATA
X-BUCK
BELL
FLASHER
GATES
WIG WAG
TRAFFIC SIGNAL
STOP SIGN
CANTILEVER

PRIVATE-S
PRIVATE-S
PRIVATE-S
PRIVATE
AETNA-KAISER-B/C
PRIVATE
UPLAND RD-B/C

FILE PAGE
LAST REVISED
SEPTEMBER 16, 2002
BRIDGES UPDATED
MAY 13, 2002
RD XING UPDATED
NOVEMBER 2, 2000



GRADE XING DATA
X-BUCK
BELL
FLASHER
GATES
WIG WAG
TRAFFIC SIGNAL
STOP SIGN
CANTILEVER

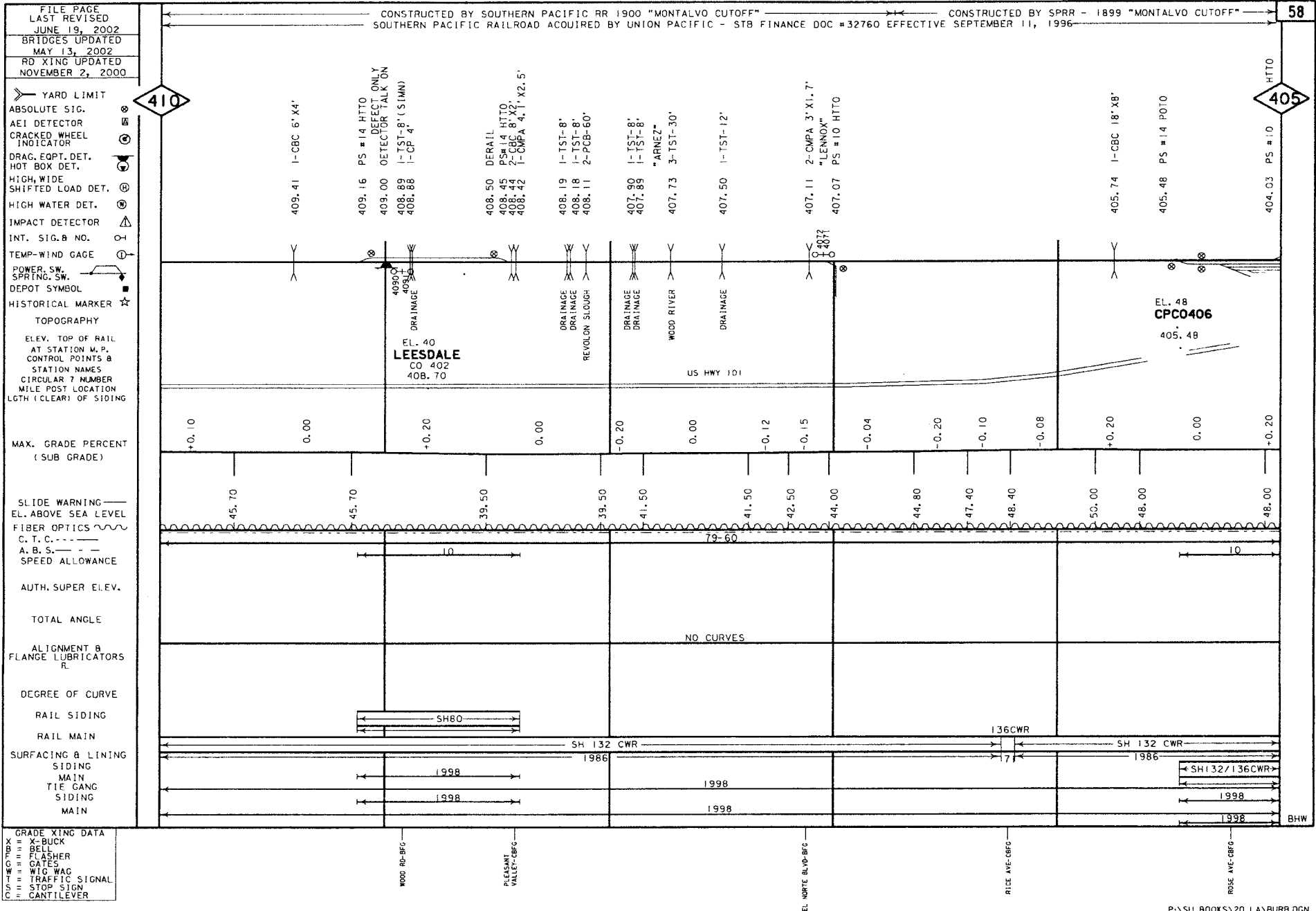
ADDLE RD-BFG

PLEASANT VALLEY-BFG

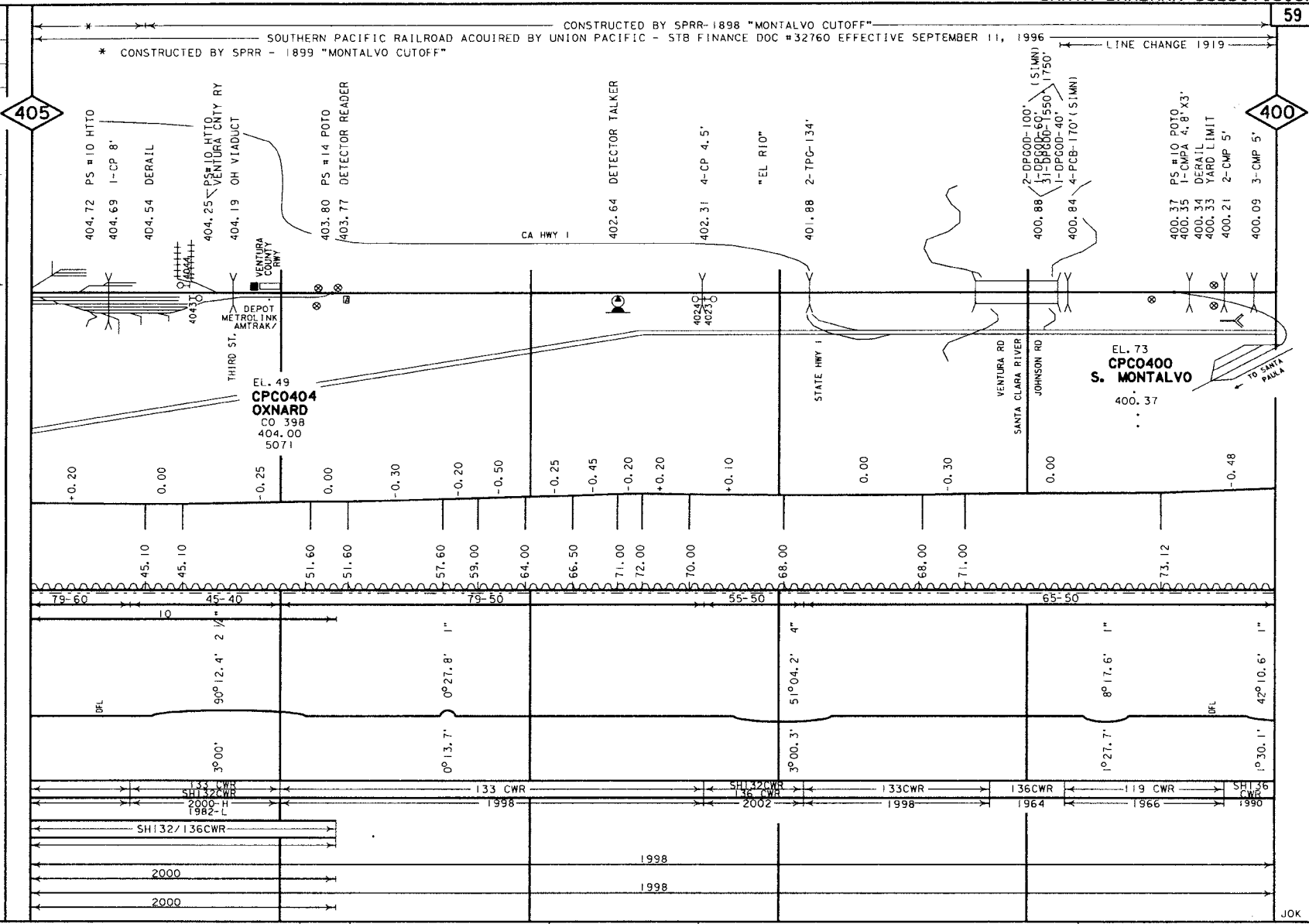
PLEASANT VALLEY-BFG

PRIVATE
LOS FOSAS RD-BFG

JDK



FILE PAGE
LAST REVISED
SEPTEMBER 16, 2002
BRIDGES UPDATED
MAY 13, 2002
ROAD XING UPDATED
NOVEMBER 2, 2000



- YARD LIMIT
- ABSOLUTE SIG.
- AEI DETECTOR
- CRACKED WHEEL INDICATOR
- DRAG, EQPT, DET.
- HOT BOX DET.
- HIGH, WIDE SHIFTED LOAD DET.
- HIGH WATER DET.
- IMPACT DETECTOR
- INT. SIG. B NO.
- TEMP-WIND GAGE
- POWER, SW. SPRING, SW.
- DEPOT SYMBOL
- HISTORICAL MARKER
- TOPOGRAPHY
- ELEV. TOP OF RAIL AT STATION M.P.
- CONTROL POINTS B
- STATION NAMES
- CIRCULAR 7 NUMBER
- MILE POST LOCATION
- LGTH (CLEAR) OF SIDING
- MAX. GRADE PERCENT (SUB GRADE)
- SLIDE WARNING
- EL. ABOVE SEA LEVEL
- FIBER OPTICS
- C. T. C.
- A. B. S.
- SPEED ALLOWANCE
- AUTH. SUPER ELEV.
- TOTAL ANGLE
- ALIGNMENT & FLANGE LUBRICATORS
- DEGREE OF CURVE
- RAIL SIDING
- RAIL MAIN
- SURFACING & LINING
- SIDING MAIN
- TIE GANG SIDING MAIN

GRADE XING DATA
X-BUCK
B-BELL
FLASHER
GATES
WIG WAG
TRAFFIC SIGNAL
STOP SIGN
CANTILEVER

VENTURA RD-BFC
COOPER RD-BFC
COLONIA RD-BFC
GONZALES RD-CBFG
VINEYARD AVE-CBFG
AUTO CENTER DR-CBFC

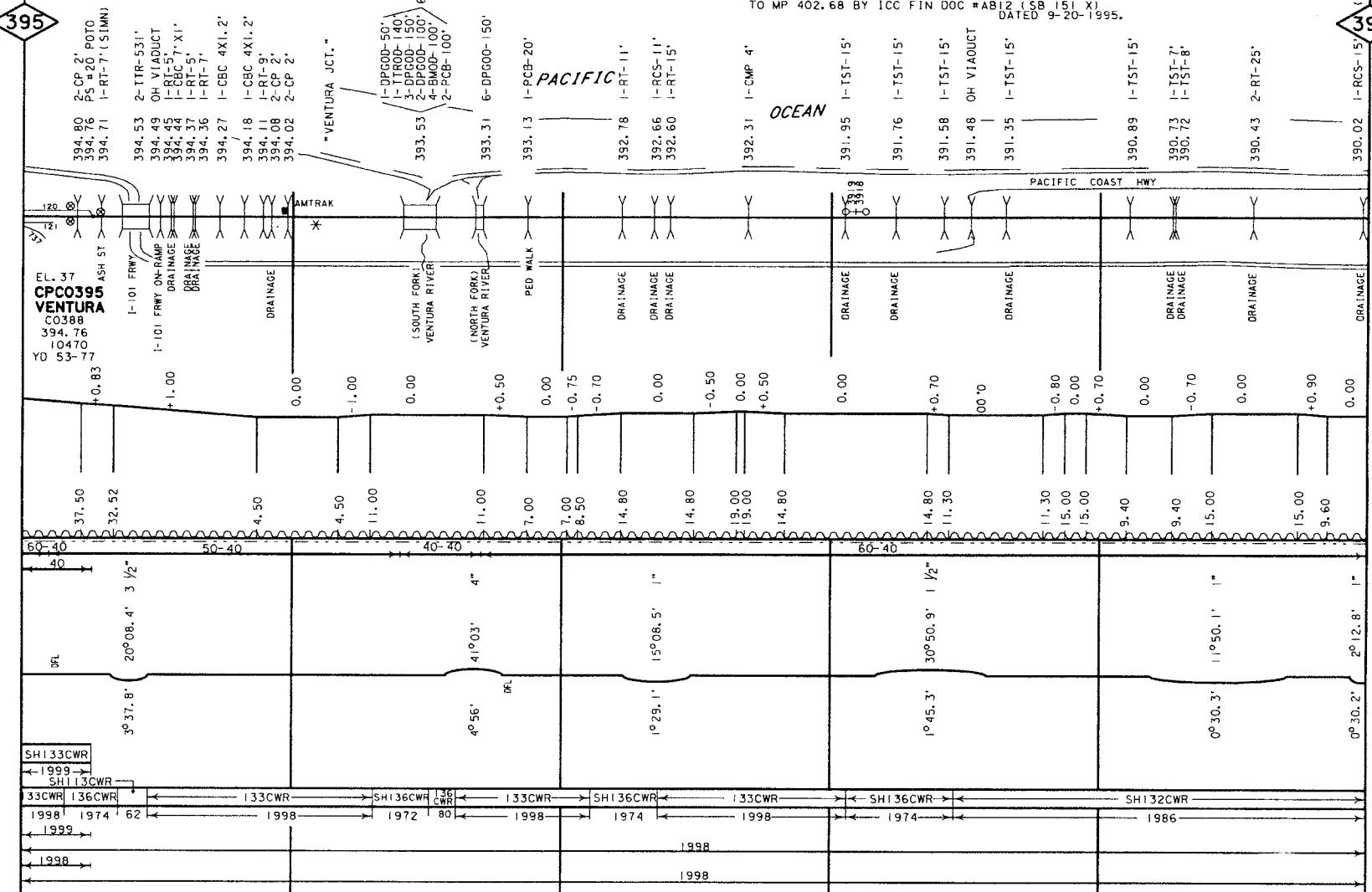
JOK

FILE PAGE
LAST REVISED
SEPTEMBER 16, 2002
BRIDGES UPDATED
MAY 13, 2002
RD XING UPDATED
NOVEMBER 2, 2000

SOUTHERN PACIFIC RAILROAD ACQUIRED BY UNION PACIFIC - STB FINANCE DOC # 32760 EFFECTIVE SEPTEMBER 11, 1996
CONSTRUCTED BY SOUTHERN PACIFIC RR - 1887
LINE CHANGE-1901

* MP 397.32 - BEGIN OJAL BRANCH FROM VENTURA JCT.
TO OJAL. ABANDONED MP 402.68 TO MP 412.42 BY ICC
FIN DOC # 25839 DATED 12-12-1969 ABANDONED MP 397.32
TO MP 402.68 BY ICC FIN DOC # AB12 (SB 151 X)
DATED 9-20-1995.

- YARD LIMIT
- ABSOLUTE SIG.
- AEI DETECTOR
- CRACKED WHEEL INDICATOR
- DRAG. EOPT. DET.
- HOT BOX DET.
- HIGH, WIDE SHIFTED LOAD DET.
- HIGH WATER DET.
- IMPACT DETECTOR
- INT. SIG. & NO.
- TEMP. WIND GAGE
- POWER, SW. SPRING, SW.
- DEPOT SYMBOL
- HISTORICAL MARKER
- TOPOGRAPHY
- ELEV. TOP OF RAIL AT STATION M.P.
- CONTROL POINTS & STATION NAMES
- CIRCULAR 7 NUMBER
- MILE POST LOCATION
- LGTH (CLEAR) OF SIDING
- MAX. GRADE PERCENT (SUB GRADE)
- SLIDE WARNING
- E.L. ABOVE SEA LEVEL
- FIBER OPTICS
- C. T. C.
- A. B. S.
- SPEED ALLOWANCE
- AUTH. SUPER ELEV.
- TOTAL ANGLE
- ALIGNMENT & FLANGE LUBRICATORS
- DEGREE OF CURVE
- RAIL SIDING
- RAIL MAIN
- SURFACING & LINING
- SIDING
- MAIN
- TIE GANG
- SIDING
- MAIN



395

390

GRADE XING DATA
X-BUCK
BEL
FLASHER
GATES
WTC WAG
TRAFFIC SIGNAL
STOP SIGN
CANTILEVER

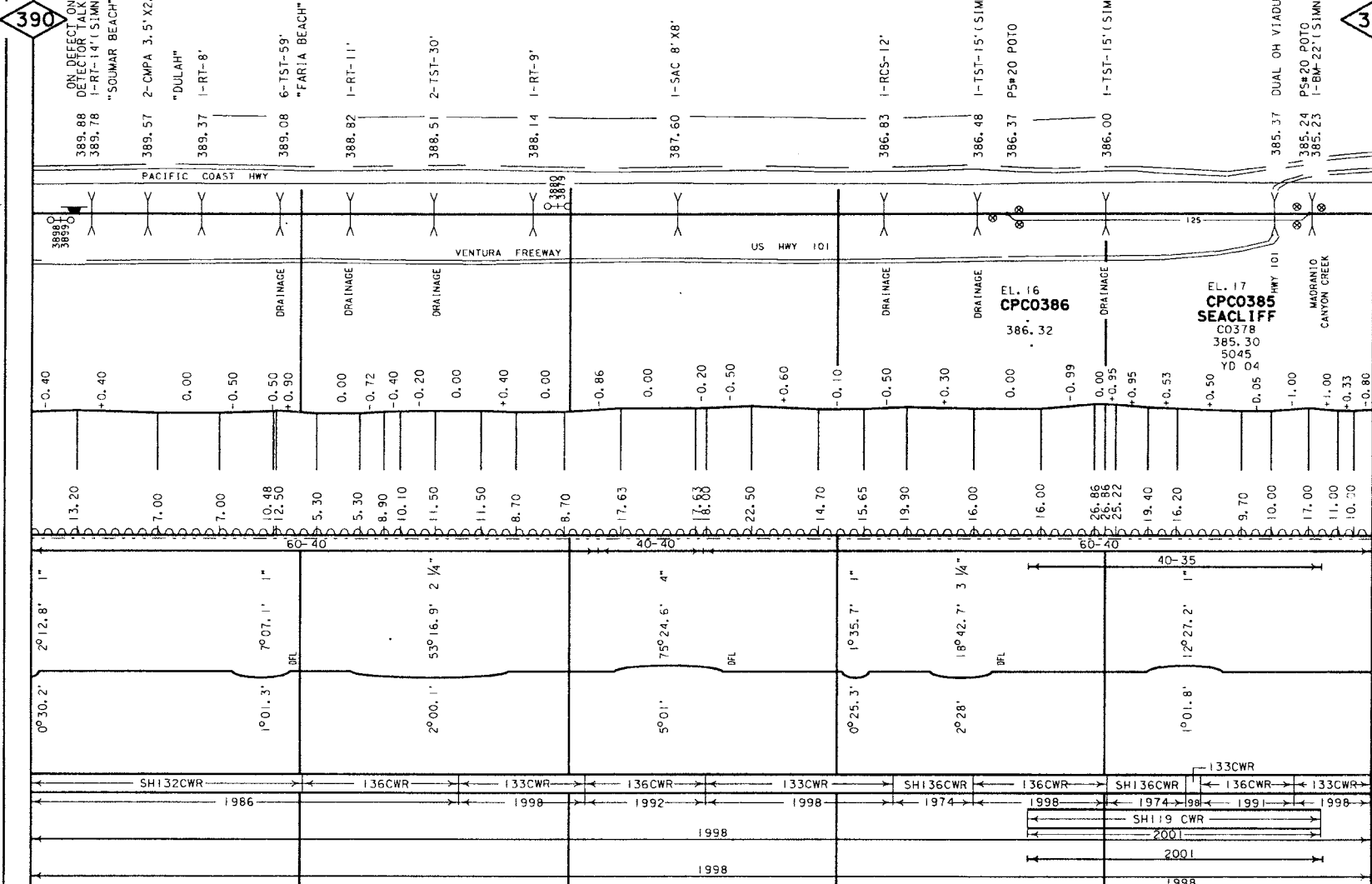
ASH ST-BFG
CALIFORNIA STR-BF
FIGUEROA ST-BFG
PRIVATE FID XING-S
OLIVE ST-BFG
PRIVATE-BFG
PRIVATE FID XING-S

JOK

FILE PAGE
LAST REVISED
SEPTEMBER 16, 2002
BRIDGES UPDATED
MAY 13, 2002
RD XING UPDATED
NOVEMBER 2, 2000

CONSTRUCTED BY SOUTHERN PACIFIC RR - 1887
SOUTHERN PACIFIC RAILROAD ACQUIRED BY UNION PACIFIC - STB FINANCE DOC #32760 EFFECTIVE SEPTEMBER 11, 1996
LINE CHANGE-1901 LINE CHANGE-19D1 LC-1900

- YARD LIMIT
- ABSOLUTE SIG.
- AEI DETECTOR
- CRACKED WHEEL INDICATOR
- DRAG, EOPT. DET.
- HOT BOX DET.
- HIGH, WIDE SHIFTED LOAD DET.
- HIGH WATER DET.
- IMPACT DETECTOR
- INT. SIG. & NO.
- TEMP-WIND GAGE
- POWER SW. SPRING SW.
- DEPOT SYMBOL
- HISTORICAL MARKER
- TOPOGRAPHY
- ELEV. TOP OF RAIL AT STATION M.P.
- CONTROL POINTS & STATION NAMES
- CIRCULAR 7 NUMBER
- MILE POST LOCATION
- LGTH (CLEAR) OF SIDING
- MAX. GRADE PERCENT (SUB GRADE)
- SLOPE WARNING
- EL. ABOVE SEA LEVEL
- FIBER OPTICS
- C. T. C.
- A. B. S.
- SPEED ALLOWANCE
- AUTH. SUPER ELEV.
- TOTAL ANGLE
- ALIGNMENT & FLANGE LUBRICATORS
- DEGREE OF CURVE
- RAIL SIDING
- RAIL MAIN
- SURFACING & LINING
- SIDING
- MAIN
- TIE GANG
- SIDING
- MAIN



390

385

GRADE XING DATA
X = BUCK
B = BELL
F = FLASHER
G = GATES
W = WIG WAG
T = TRAFFIC SIGNAL
S = STOP SIGN
C = CANTILEVER

CONTINENTAL OIL CO-BFG

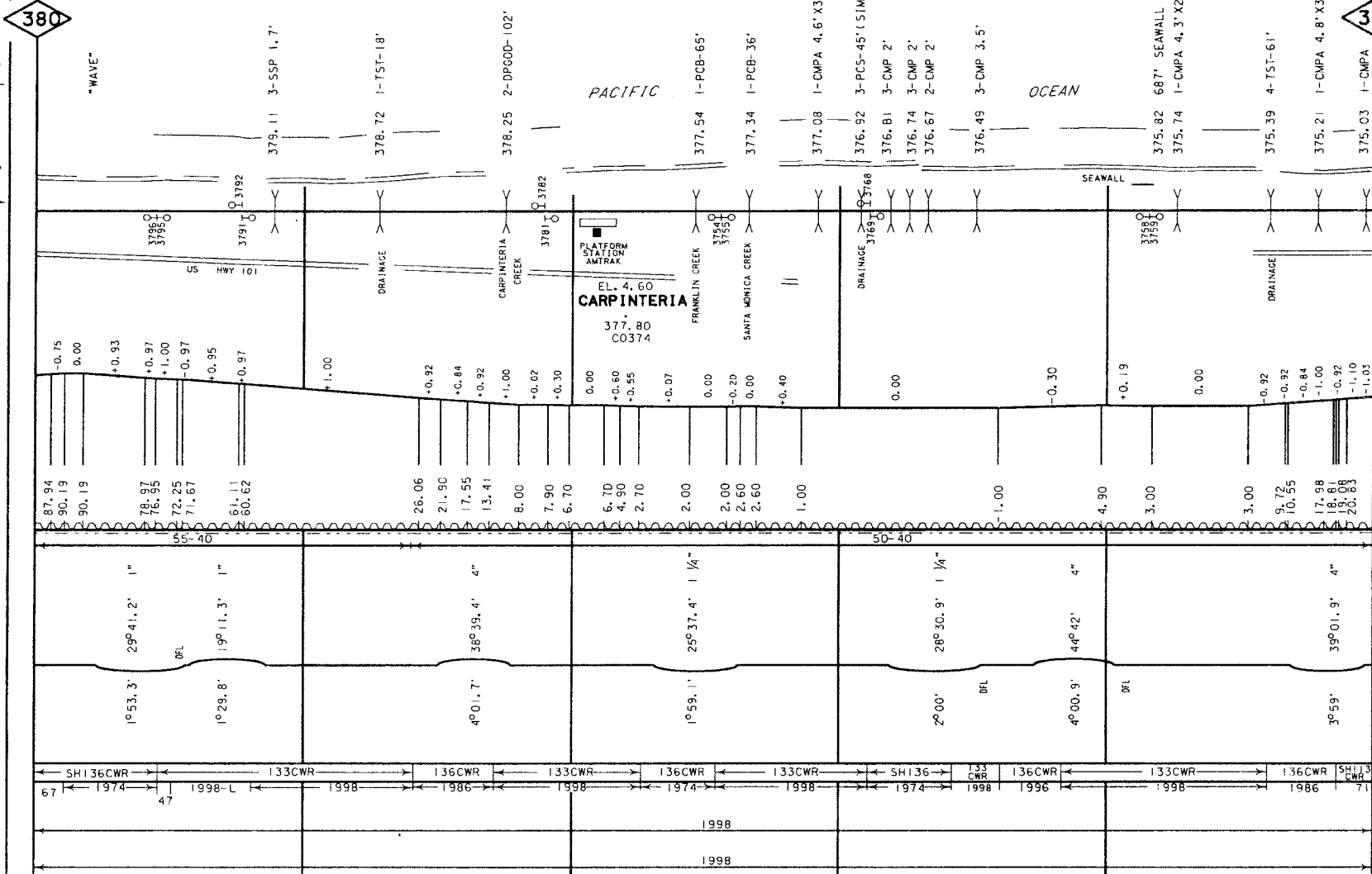
GENERAL PETROLEUM CO-BFG

CONWAY OIL CO-BFG

FILE PAGE
LAST REVISED
SEPTEMBER 17, 2002
BRIDGES UPDATED
MAY 13, 2002
RD XING UPDATED
NOVEMBER 2, 2000

SOUTHERN PACIFIC RAILROAD ACQUIRED BY UNION PACIFIC - STB FINANCE DOC #32760 EFFECTIVE SEPTEMBER 11, 1996
CONSTRUCTED BY SOUTHERN PACIFIC RR - 1887
CONSTRUCT PROPOSED SIDING-1999

- YARD LIMIT
- ABSOLUTE SIG.
- AEI DETECTOR
- CRACKED WHEEL INDICATOR
- DRAG. EOPT. DET.
- HOT BOX DET.
- HIGH, WIDE SHIFTED LOAD DET.
- HIGH WATER DET.
- IMPACT DETECTOR
- INT. SIG. B NO.
- TEMP-WIND GAGE
- POWER. SW. SPRING. SW.
- DEPOT SYMBOL
- HISTORICAL MARKER
- TOPOGRAPHY
- ELEV. TOP OF RAIL AT STATION M.P.
- CONTROL POINTS & STATION NAMES
- CIRCULAR 7 NUMBER
- MILE POST LOCATION
- LGTH (CLEAR) OF SIDING
- MAX. GRADE PERCENT (SUB GRADE)
- SLIDE WARNING
- EL. ABOVE SEA LEVEL
- FIBER OPTICS
- C. T. C.
- A. B. S.
- SPEED ALLOWANCE
- AUTH. SUPER ELEV.
- TOTAL ANGLE
- ALIGNMENT B FLANGE LUBRICATORS
- DEGREE OF CURVE
- RAIL SIDING
- RAIL MAIN
- SURFACING & LINING
- SIDING MAIN
- TIE GANG SIDING MAIN



GRADE XING DATA
X-BUCK
BELL
FLASHER
GATES
WIG WAG
TRAFFIC SIGNAL
STOP SIGN
CANTILEVER

CHEVRON USA PVT-BFG
PALM AVE-CBFC
LINDEN AVE-BFG
SANDYLAND HOME CO-BFG
APPLE ST-S
SANDYLAND HOME CO-BFG
PADUARD LANE-BFG

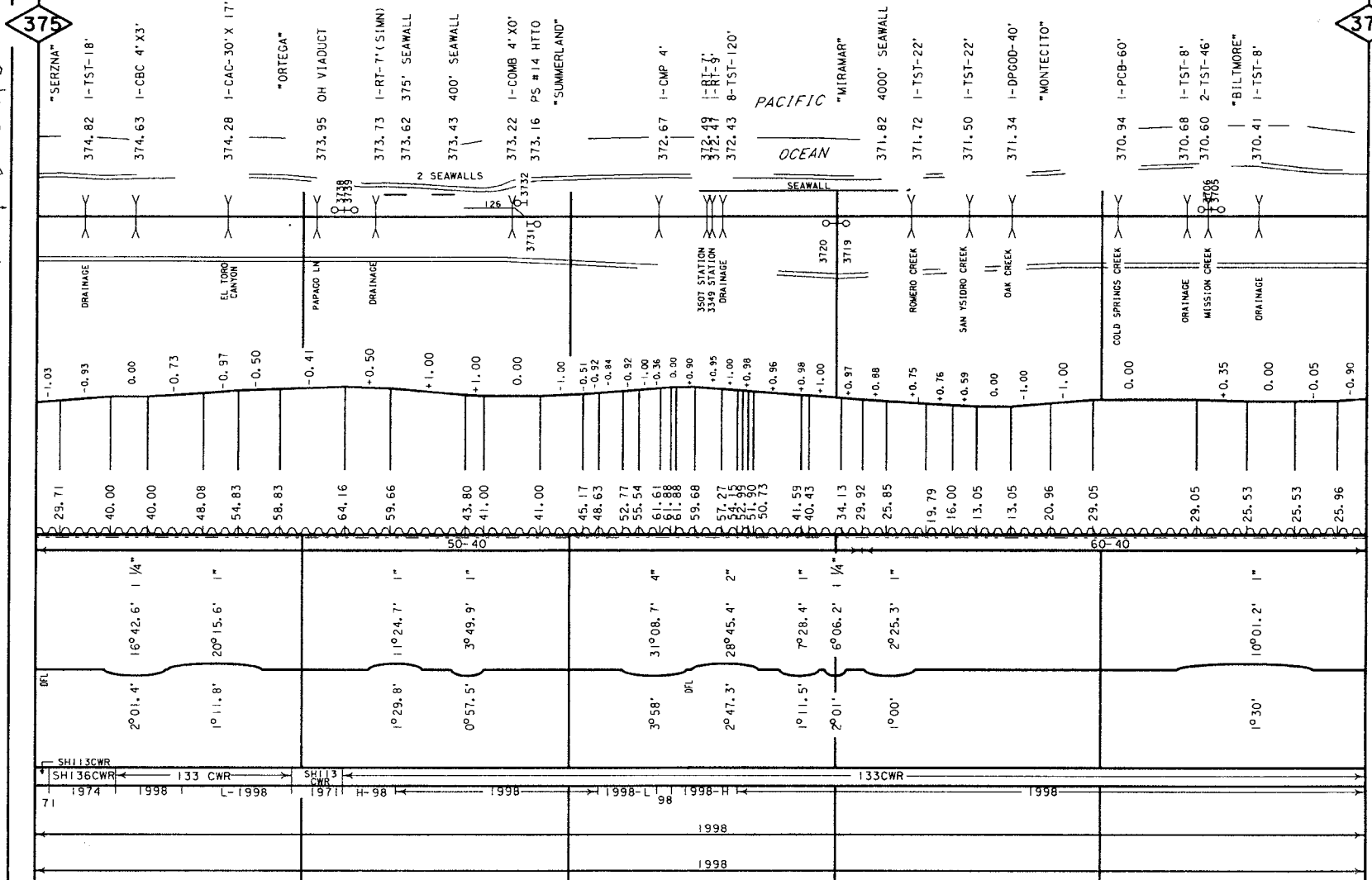
JOK

FILE PAGE
LAST REVISED
OCTOBER 14, 2002
BRIDGES UPDATED
MAY 13, 2002
RD XING UPDATED
NOVEMBER 2, 2000

SOUTHERN PACIFIC RAILROAD ACQUIRED BY SOUTHERN PACIFIC RR - 1887
UNION PACIFIC - STB FINANCE DOC #32760 EFFECTIVE SEPTEMBER 11, 1996

LINE CHANGE-1907 LINE CHANGE-1908 LINE CHANGE-1901 LINE CHANGE-1901

YARD LIMIT
ABSOLUTE SIG.
AEI DETECTOR
CRACKED WHEEL INDICATOR
DRAG. EOPT. DET.
HOT BOX DET.
HIGH, WIDE SHIFTED LOAD DET.
HIGH WATER DET.
IMPACT DETECTOR
INT. SIG. B NO.
TEMP-WIND GAGE
POWER, SW. SPRING, SW.
DEPOT SYMBOL
HISTORICAL MARKER
TOPOGRAPHY
ELEV. TOP OF RAIL AT STATION M.P.
CONTROL POINTS & STATION NAMES
CIRCULAR 7 NUMBER
MILE POST LOCATION
LGTH (CLEAR) OF SIDING
MAX. GRADE PERCENT (SUB GRADE)
SLIDE WARNING
EL. ABOVE SEA LEVEL
FIBER OPTICS
C. T. C. ---
A. B. S. ---
SPEED ALLOWANCE
AUTH. SUPER ELEV.
TOTAL ANGLE
ALIGNMENT & FLANGE LUBRICATORS
DEGREE OF CURVE
RAIL SIDING
RAIL MAIN
SURFACING & LINING
SIDING MAIN
TIE GANG
SIDING MAIN



375

370

CUT-TO-BOX
GRADE XING DATA
BUCK
BELL
FLASHER
GATE
WIG WAG
TRAFFIC SIGNAL
STOP SIGN
CANTILEVER

FINNEY ST-BFG
WHITE NEWMAN
COMPRES-BFG
PRIVATE-S
LOOKOUT PARK-BFG
POSTLIPD LANE-BFG
MIRAMAR HOTEL-BFG
RED WALK-S
EUCALYPTUS LANE-BFG
HOLLAND HILL-BFG
BUTTEFLY LANE-S

FILE PAGE
LAST REVISED
OCTOBER 14, 2002
BRIDGES UPDATED
MAY 13, 2002
RD XING UPDATED
NOVEMBER 2, 2000

370

- YARD LIMIT
- ABSOLUTE SIG.
- AEI DETECTOR
- CRACKED WHEEL INDICATOR
- DRAG. EQPT. DET.
- HOT BOX DET.
- HIGH, WIDE SHIFTED LOAD DET.
- HIGH WATER DET.
- IMPACT DETECTOR
- INT. SIG. & NO.
- TEMP. WIND GAGE
- POWER, SW. SPRING, SW.
- DEPOT SYMBOL
- HISTORICAL MARKER

TOPOGRAPHY
ELEV. TOP OF RAIL AT STATION M.P.
CONTROL POINTS & STATION NAMES
CIRCULAR 7 NUMBER
MILE POST LOCATION
LGTH (CLEAR) OF SIDING

MAX. GRADE PERCENT (SUB GRADE)

SLIDE WARNING
EL. ABOVE SEA LEVEL
FIBER OPTICS
C. T. C.
A. B. S.

NO. 1 TRACK SPEED ALLOWANCE
NO. 2 TRACK

AUTH. SUPER ELEV.

TOTAL ANGLE

ALIGNMENT & FLANGE LUBRICATORS

DEGREE OF CURVE

SIDING

RAIL NO. 1 TRACK

NO. 2 TRACK

SURFACING & LINING

SIDING NO. 1 TRACK

NO. 2 TRACK

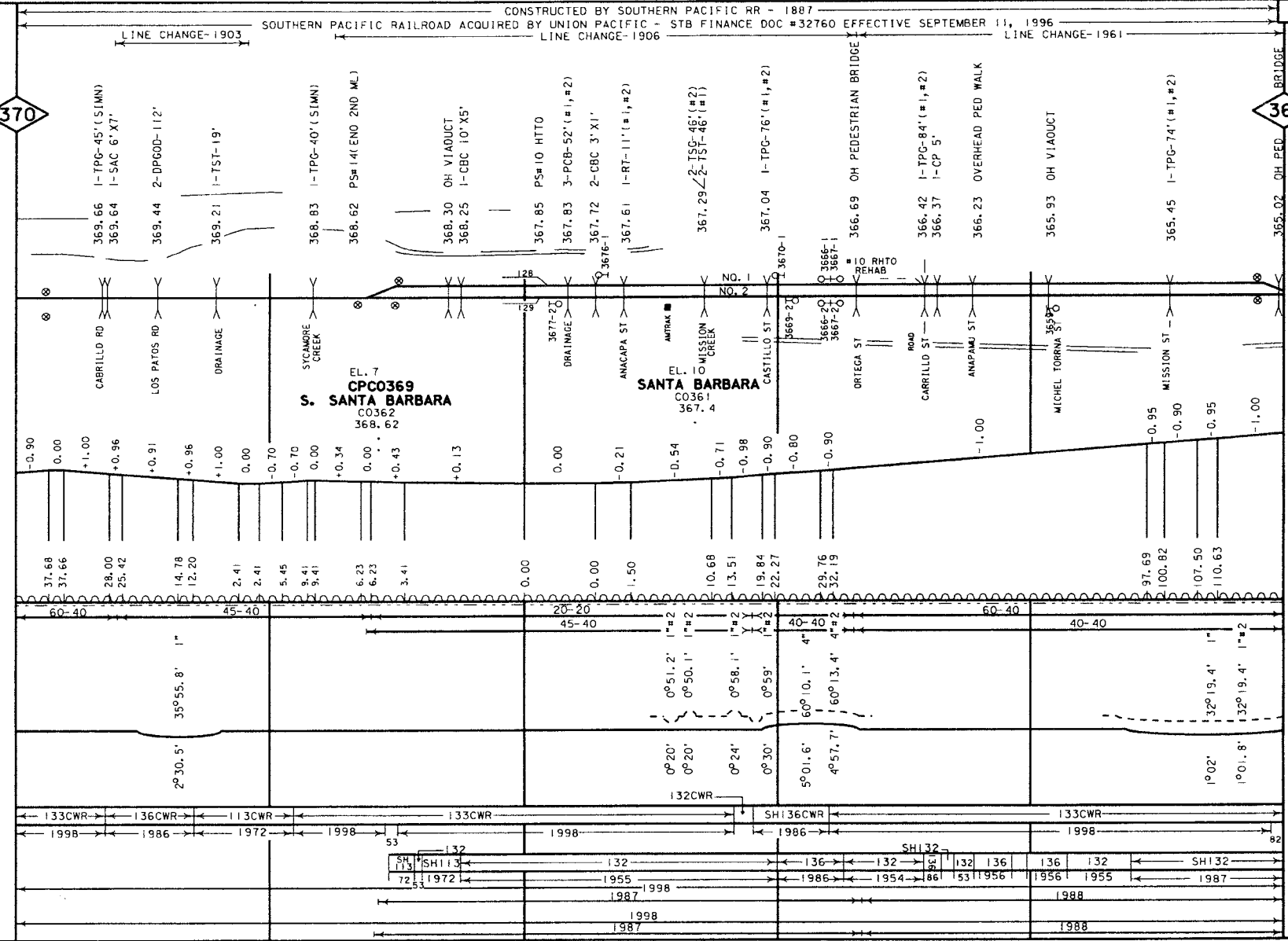
TIE GANG

SIDING NO. 1 TRACK

NO. 2 TRACK

GRADE XING DATA

X-BUCK
BEL
FLASHER
GATES
W/C WAG
TRAFFIC SIGNAL
STOP SIGN
CANTILEVER



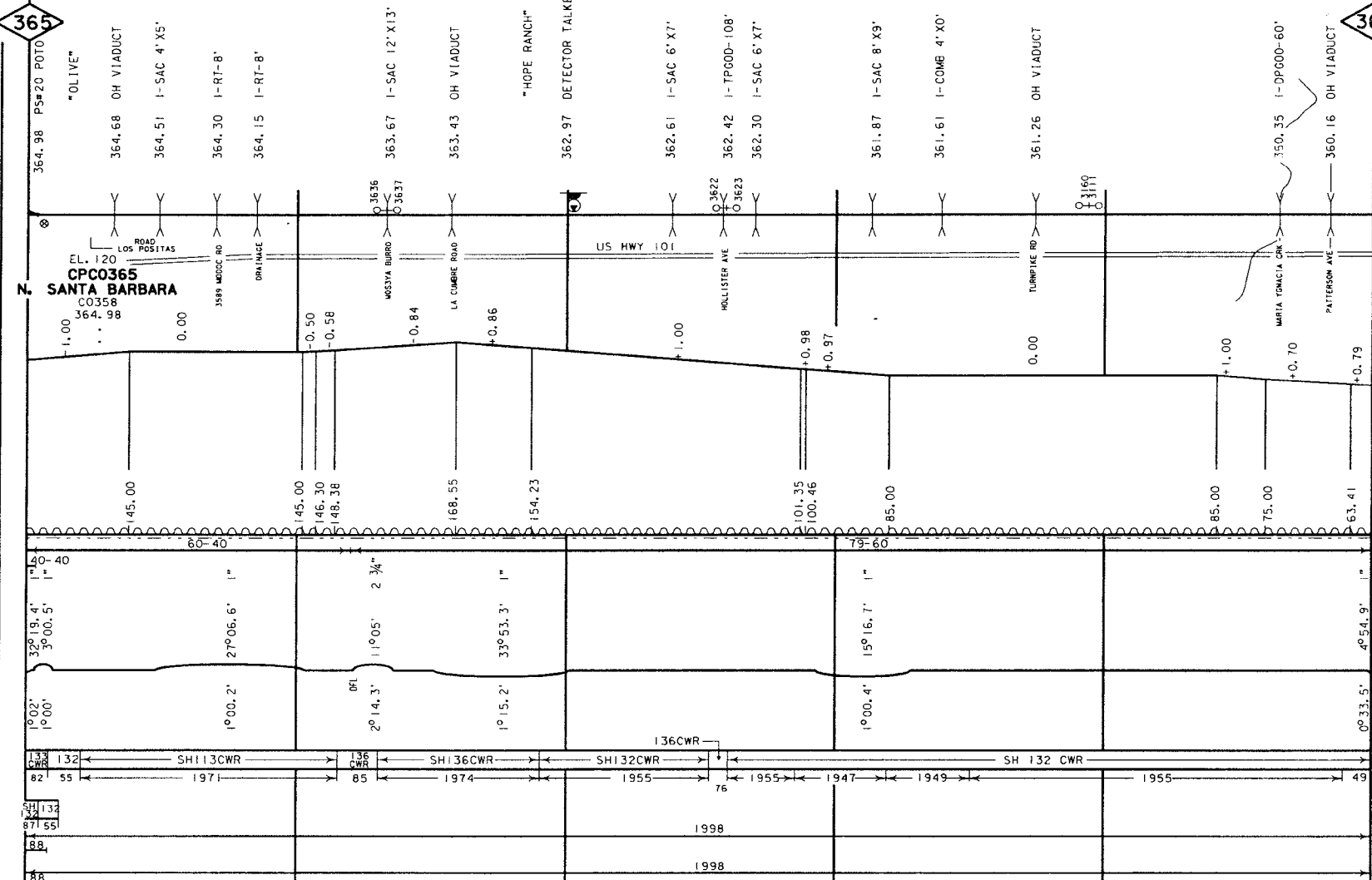
365

LRS

FILE PAGE
 LAST REVISED
 SEPTEMBER 17, 2002
 BRIDGES UPDATED
 MAY 9, 2002
 ROAD CROSSING UPDATED
 NOVEMBER 2, 2000

CONSTRUCTED BY SOUTHERN PACIFIC RR - 1887
 SOUTHERN PACIFIC RAILROAD ACQUIRED BY UNION PACIFIC - STB FINANCE DOC #32760 EFFECTIVE SEPTEMBER 11, 1996
 LINE CHANGE-1901 LINE CHANGE-1900

- YARD LIMIT
- ABSOLUTE SIG.
- AEI DETECTOR
- CRACKED WHEEL INDICATOR
- DRAG. EQPT. DET. / HOT BOX DET.
- HIGH, WIDE SHIFTED LOAD DET.
- HIGH WATER DET.
- IMPACT DETECTOR
- INT. SIG. & NO.
- TEMP-WIND GAGE
- POWER, SW. / SPRING, SW.
- DEPOT SYMBOL
- HISTORICAL MARKER
- TOPOGRAPHY
- ELEV. TOP OF RAIL AT STATION M.P.
- CONTROL POINTS & STATION NAMES
- CIRCULAR 7 NUMBER
- MILE POST LOCATION
- LGTH (CLEAR) OF SIDING
- MAX. GRADE PERCENT (SUB GRADE)
- SLIDE WARNING
- EL. ABOVE SEA LEVEL
- FIBER OPTICS
- C. T. C.
- A. B. S.
- SPEED ALLOWANCE
- AUTH. SUPER ELEV.
- TOTAL ANGLE
- ALIGNMENT & FLANGE LUBRICATORS
- DEGREE OF CURVE
- RAIL SIDING
- RAIL MAIN
- SURFACING & LINING
- SIDING MAIN
- TIE GANG SIDING MAIN



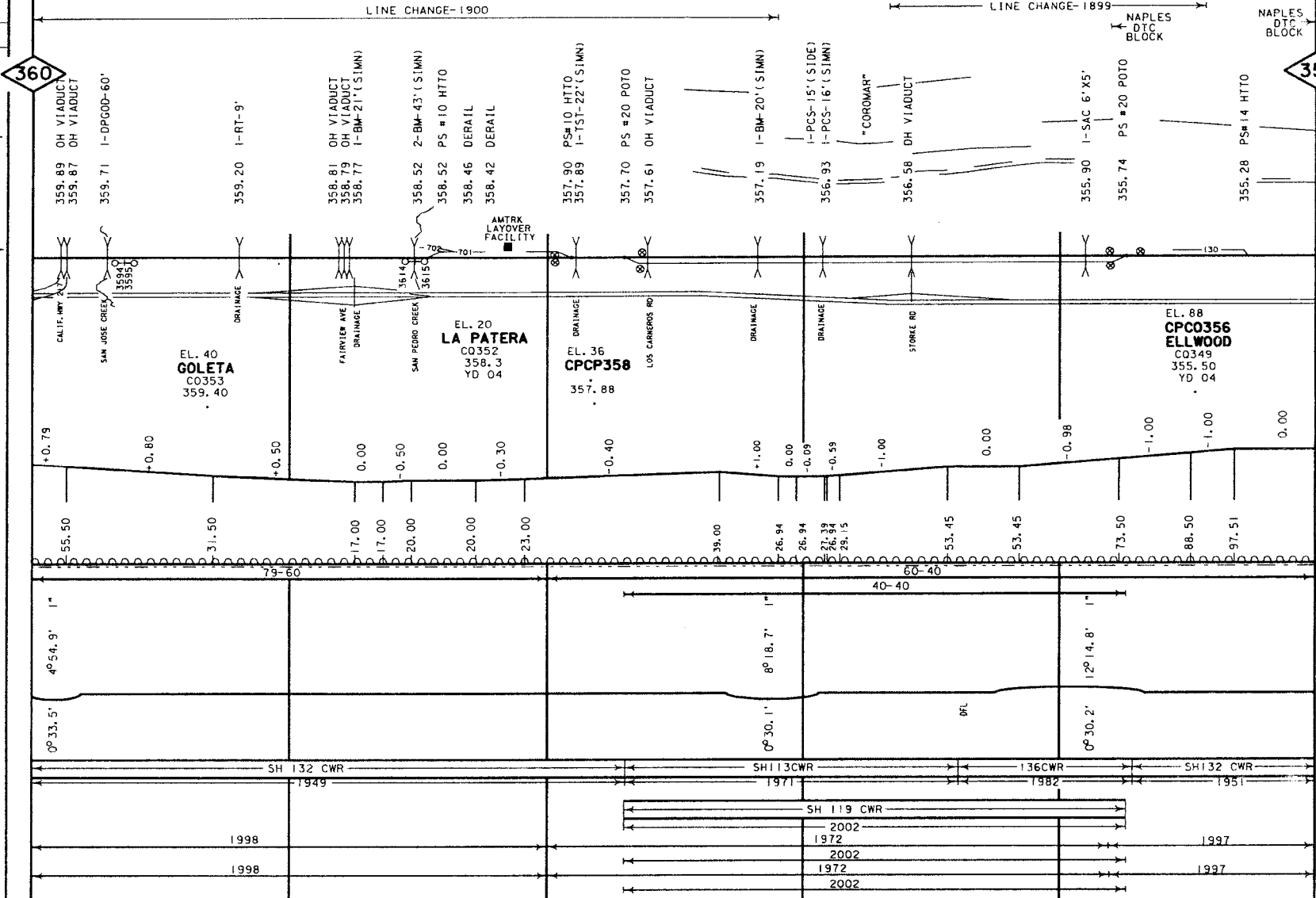
GRADE CROSSING DATA
 X = BUCK
 B = BELL
 F = FLASHER
 G = GATES
 W = W/C WAG
 T = TRAFFIC SIGNAL
 S = STOP SIGN
 C = CANTILEVER

JOK

FILE PAGE
LAST REVISED
OCTOBER 15, 2002
BRIDGES UPDATED
JUNE 9, 2002
RD XING UPDATED
OCTOBER 9, 2000

SOUTHERN PACIFIC RAILROAD ACQUIRED BY UNION PACIFIC - STB FINANCE DOC #32760 EFFECTIVE SEPTEMBER 11, 1996

- YARD LIMIT
- ABSOLUTE SIG.
- AEI DETECTOR
- CRACKED WHEEL INDICATOR
- ORAG. EQPT. DET. HOT BOX DET.
- HIGH, WIDE SHIFTED LOAD DET.
- HIGH WATER DET.
- IMPACT DETECTOR
- INT. SIG. & NO.
- TEMP-WIND GAGE
- POWER SW. SPRING SW.
- DEPOT SYMBOL
- HISTORICAL MARKER
- TOPOGRAPHY
- ELEV. TOP OF RAIL AT STATION M.P.
- CONTROL POINTS & STATION NAMES
- CIRCULAR 7 NUMBER
- MILE POST LOCATION
- LGTH (CLEAR) OF SIDING
- MAX. GRADE PERCENT (SUB GRADE)
- SLIDE WARNING
- EL. ABOVE SEA LEVEL
- FIBER OPTICS
- C. T. C.
- A. B. S.
- SPEED ALLOWANCE
- AUTH. SUPER ELEV.
- TOTAL ANGLE
- ALIGNMENT & FLANGE LUBRICATORS
- DEGREE OF CURVE
- RAIL SIDING
- RAIL MAIN
- SURFACING & LINING
- SIDING
- MAIN
- TIE GANG
- SIDING
- MAIN



GRADE XING DATA
X-BUCK
BELL
FLASHER
GATES
WIG WAG
TRAFFIC SIGNAL
STOP SIGN
CANTILEVER

COASTAL AC-CHEM CO-#

KELLOG AVE.-BFC

PRIVATE-5

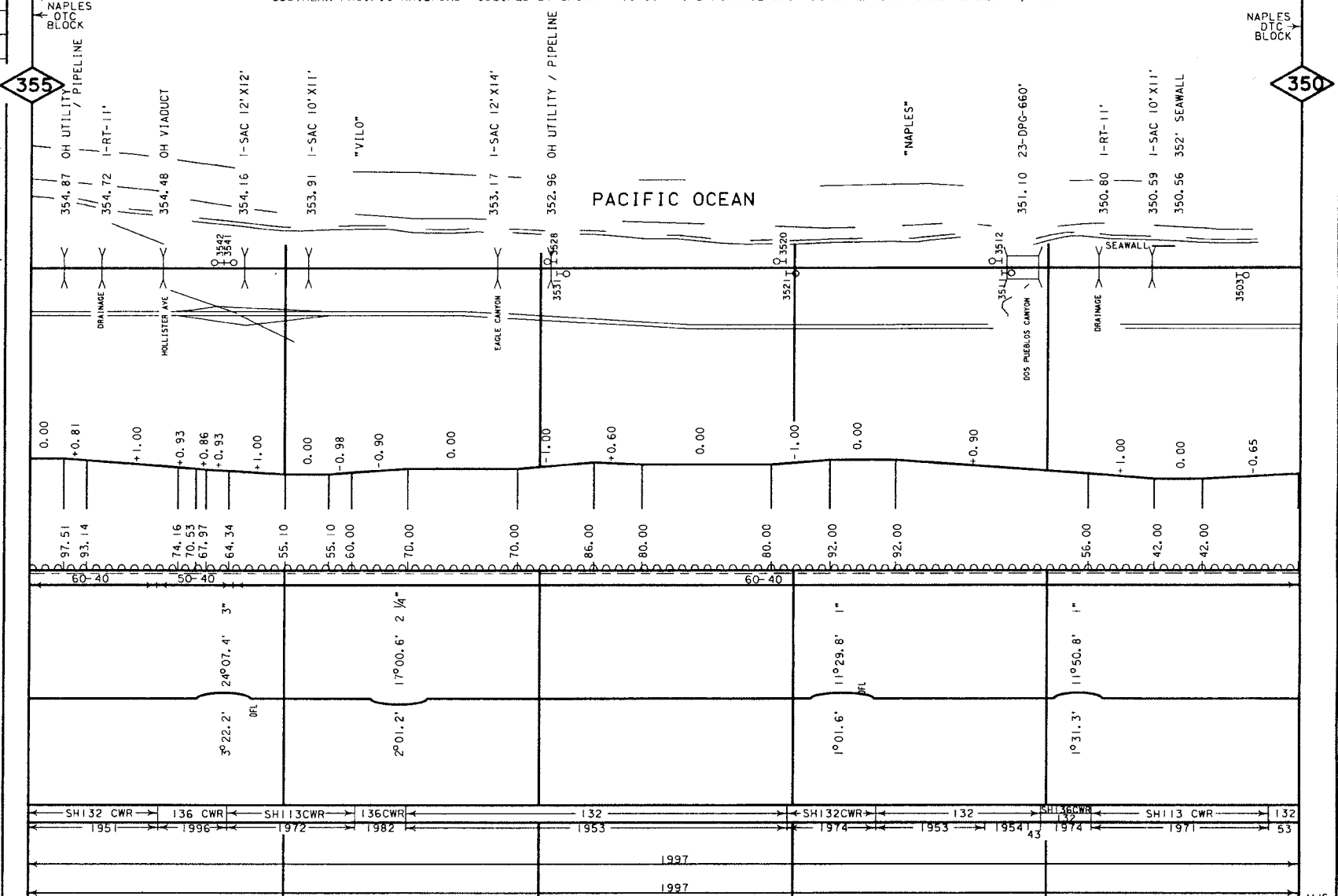
MJS

FILE PAGE
LAST REVISED
OCTOBER 15, 2002
BRIDGES UPDATED
MAY 9, 2002
RD XING UPDATED
NOVEMBER 2, 2000

SOUTHERN PACIFIC RAILROAD CONSTRUCTED BY SPRR-1887 ACQUIRED BY UNION PACIFIC - STB FINANCE DOC #32760 EFFECTIVE SEPTEMBER 11, 1996 CONSTRUCTED BY SPRR 1906

638

- YARD LIMIT
- ABSOLUTE SIG.
- AEI DETECTOR
- CRACKED WHEEL INDICATOR
- DRAG. EQPT. DET.
- HOT BOX DET.
- HIGH, WIDE SHIFTED LOAD DET.
- HIGH WATER DET.
- IMPACT DETECTOR
- INT. SIG. 8 NO.
- TEMP-WIND GAGE
- POWER. SW. SPRING. SW.
- DEPOT SYMBOL
- HISTORICAL MARKER
- TOPOGRAPHY
 - ELEV. TOP OF RAIL AT STATION M.P.
 - CONTROL POINTS & STATION NAMES
 - CIRCULAR 7 NUMBER
 - MILE POST LOCATION
 - LGTH (CLEAR) OF SIDING
- MAX. GRADE PERCENT (SUB GRADE)
- SLIDE WARNING
- EL. ABOVE SEA LEVEL
- FIBER OPTICS
- C. T. C. ---
- A. B. S. ---
- SPEED ALLOWANCE
- AUTH. SUPER ELEV.
- TOTAL ANGLE
- ALIGNMENT & FLANGE LUBRICATORS
- DEGREE OF CURVE
- RAIL SIDING
- RAIL MAIN
- SURFACING & LINING
 - SIDING MAIN
 - TIE GANG SIDING MAIN



GRADE XING DATA
 B = BUCK
 X = BELL
 L = LASHER
 G = GATES
 W = WIDENING
 T = TRAFFIC SIGNAL
 S = STOP SIGN
 C = CANTILEVER

MJS

FILE PAGE
LAST REVISED
SEPTEMBER 17, 2002
BRIDGES UPDATED
MAY 9, 2002
RD XING UPDATED
OCTOBER 9, 2000

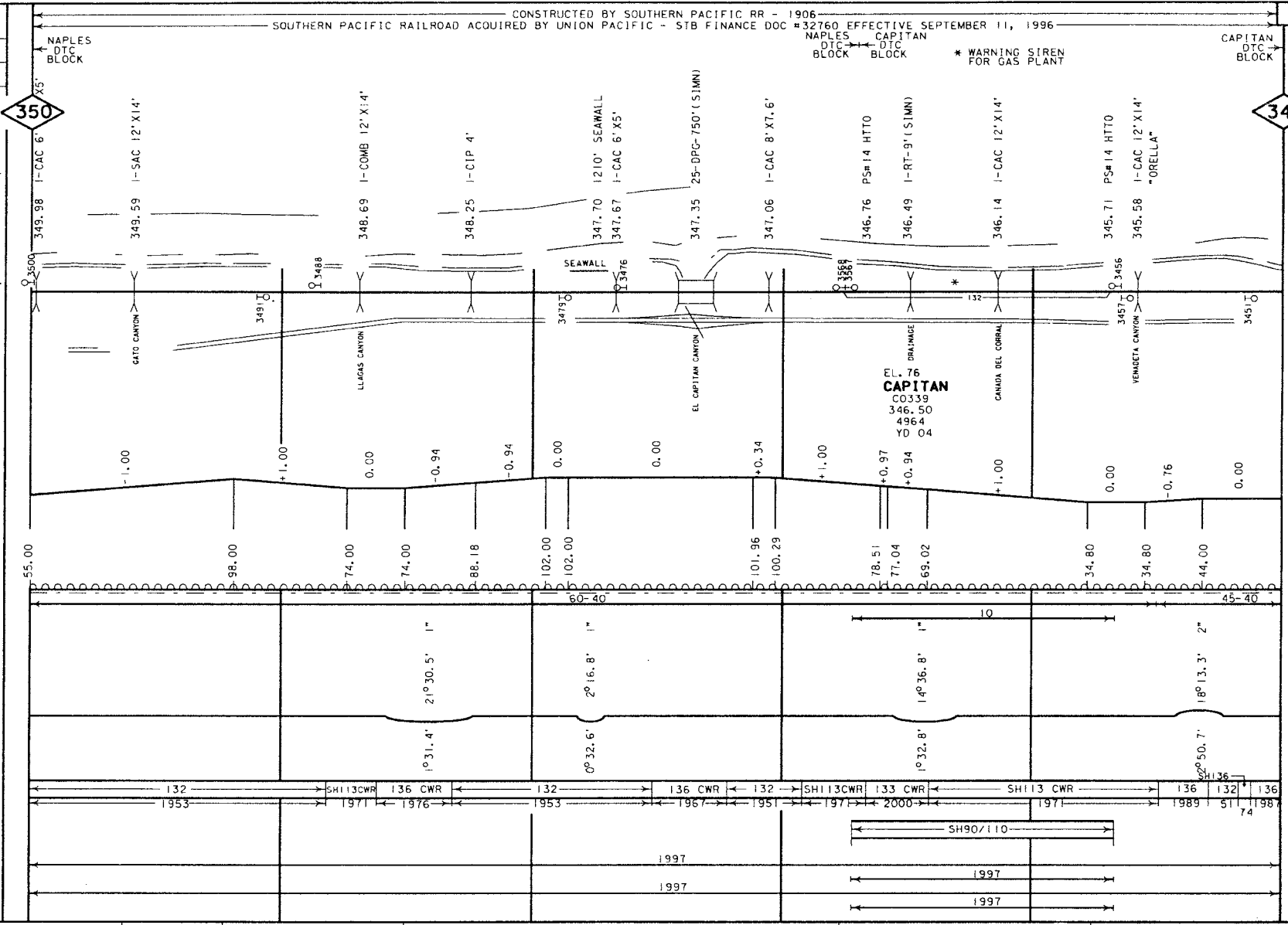
SOUTHERN PACIFIC RAILROAD ACQUIRED BY UNION PACIFIC - STB FINANCE DOC #32760 EFFECTIVE SEPTEMBER 11, 1996

NAPLES DTC BLOCK
CAPITAN DTC BLOCK

* WARNING SIREN FOR GAS PLANT

CAPITAN DTC BLOCK

- YARD LIMIT
- ABSOLUTE SIG.
- AEI DETECTOR
- CRACKED WHEEL INDICATOR
- DRAG. EQPT. DET.
- HOT BOX DET.
- HIGH, WIDE
- SHIFTED LOAD DET.
- HIGH WATER DET.
- IMPACT DETECTOR
- INT. SIG. & NO.
- TEMP. WIND GAGE
- POWER, SW. SPRING, SW.
- DEPOT SYMBOL
- HISTORICAL MARKER
- TOPOGRAPHY
- ELEV. TOP OF RAIL AT STATION M.P.
- CONTROL POINTS & STATION NAMES
- CIRCULAR 7 NUMBER
- MILE POST LOCATION
- LGTH (CLEAR) OF SIDING
- MAX. GRADE PERCENT (SUB GRADE)
- SLIDE WARNING
- EL. ABOVE SEA LEVEL
- FIBER OPTICS
- C. T. C.
- A. B. S.
- SPEED ALLOWANCE
- AUTH. SUPER ELEV.
- TOTAL ANGLE
- ALIGNMENT & FLANGE LUBRICATORS
- DEGREE OF CURVE
- RAIL SIDING
- RAIL MAIN
- SURFACING & LINING
- SIDING MAIN
- TIE GANG SIDING MAIN



GRADE XING DATA
X-BUCK
BELL
FLASHER
GATES
WIG WAG
TRAFFIC SIGNAL
STOP SIGN
CANTILEVER

PRIVATE-S

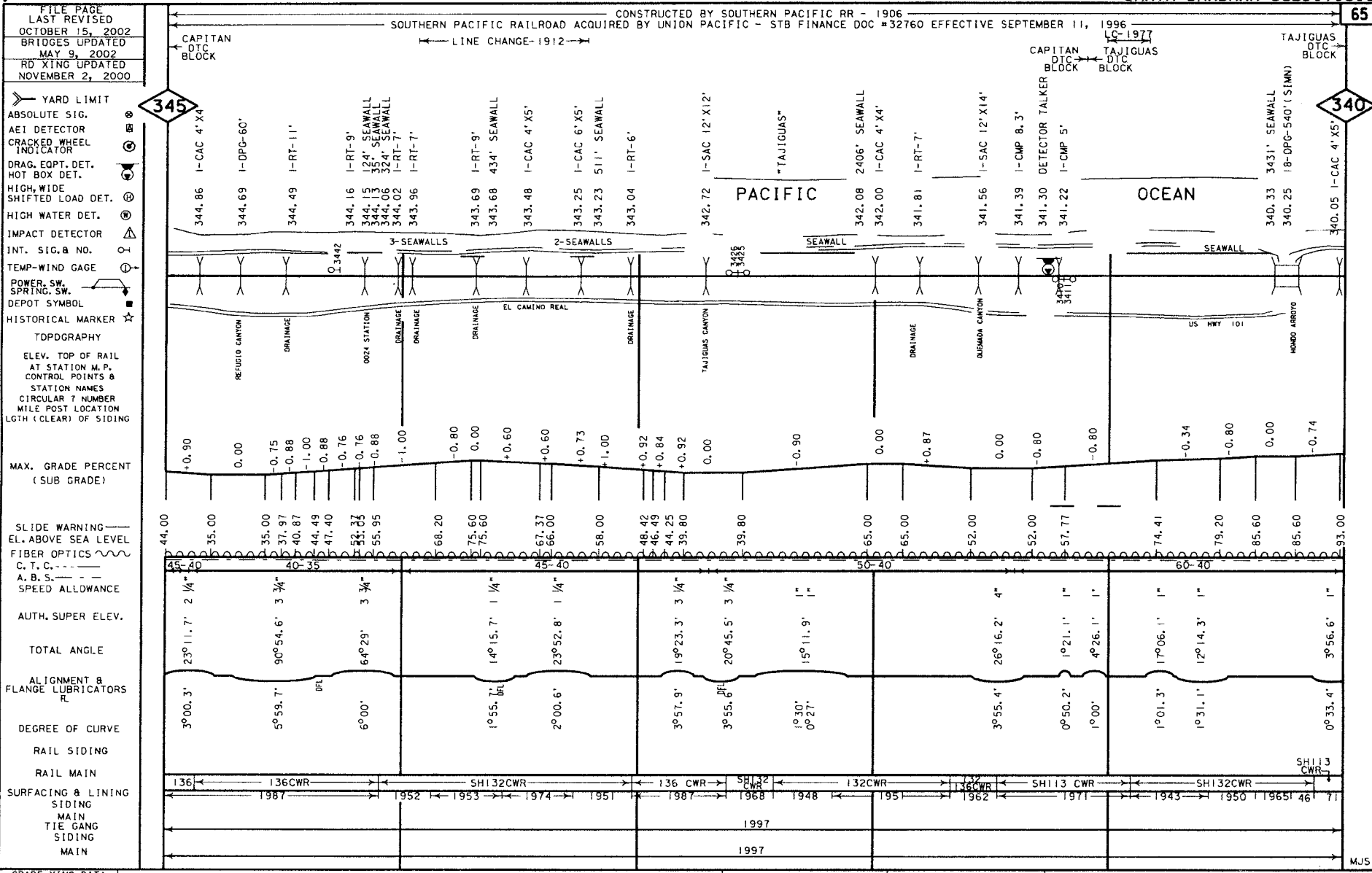
PRIVATE-S

PRIVATE-S

PRIVATE IND-BF

PRIVATE-S

JOK



GRADE XING DATA
X-BUCK
BELL
FLASHER
GATES
WIG WAG
TRAFFIC SIGNAL
STOP SIGN
CANTILEVER

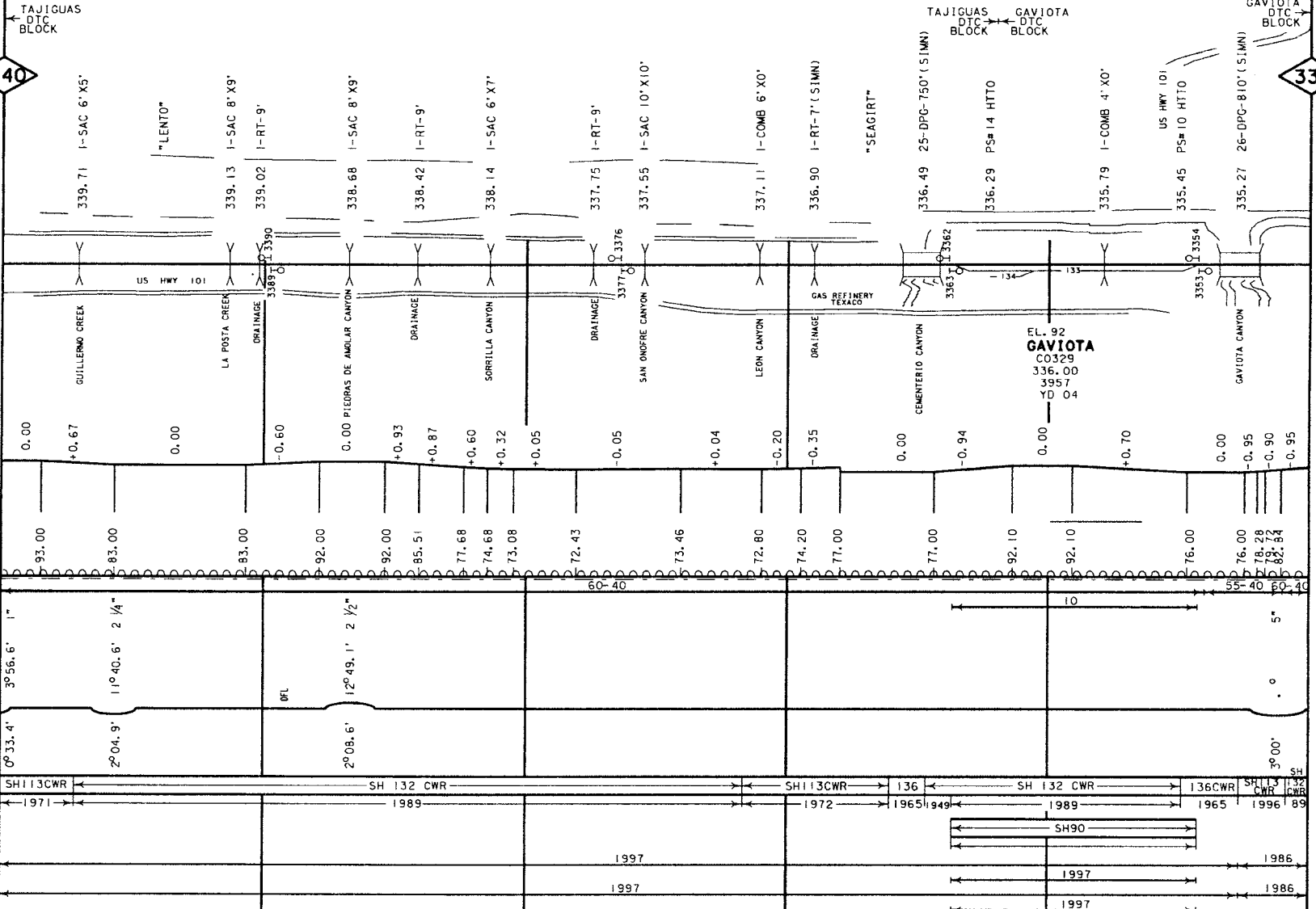
FILE PAGE
LAST REVISED
OCTOBER 15, 2002
BRIDGES UPDATED
MAY 9, 2002
RD XING UPDATED
OCTOBER 9, 2000

SOUTHERN PACIFIC RAILROAD ACQUIRED BY UNION PACIFIC - STB FINANCE DOC #32760 EFFECTIVE SEPTEMBER 11, 1996

- YARD LIMIT
- ABSOLUTE SIG.
- AEI DETECTOR
- CRACKED WHEEL INDICATOR
- DRAG. EQPT. DET. HOT BOX DET.
- HIGH, WIDE SHIFTED LOAD DET.
- HIGH WATER DET.
- IMPACT DETECTOR
- INT. SIG. NO.
- TEMP-WIND GAGE
- POWER, SW. SPRING, SW.
- DEPOT SYMBOL
- HISTORICAL MARKER
- TOPOGRAPHY
- ELEV. TOP OF RAIL AT STATION M.P. CONTROL POINTS & STATION NAMES
- CIRCULAR 7 NUMBER
- MILE POST LOCATION
- LGTH (CLEAR) OF SIDING
- MAX. GRADE PERCENT (SUB GRADE)
- SLIDE WARNING
- E.L. ABOVE SEA LEVEL
- FIBER OPTICS
- C. T. C.
- A. B. S.
- SPEED ALLOWANCE
- AUTH. SUPER ELEV.
- TOTAL ANGLE
- ALIGNMENT & FLANGE LUBRICATORS
- DEGREE OF CURVE
- RAIL SIDING
- RAIL MAIN
- SURFACING & LINING
- SIDING MAIN
- TIE GANG
- SIDING MAIN

340

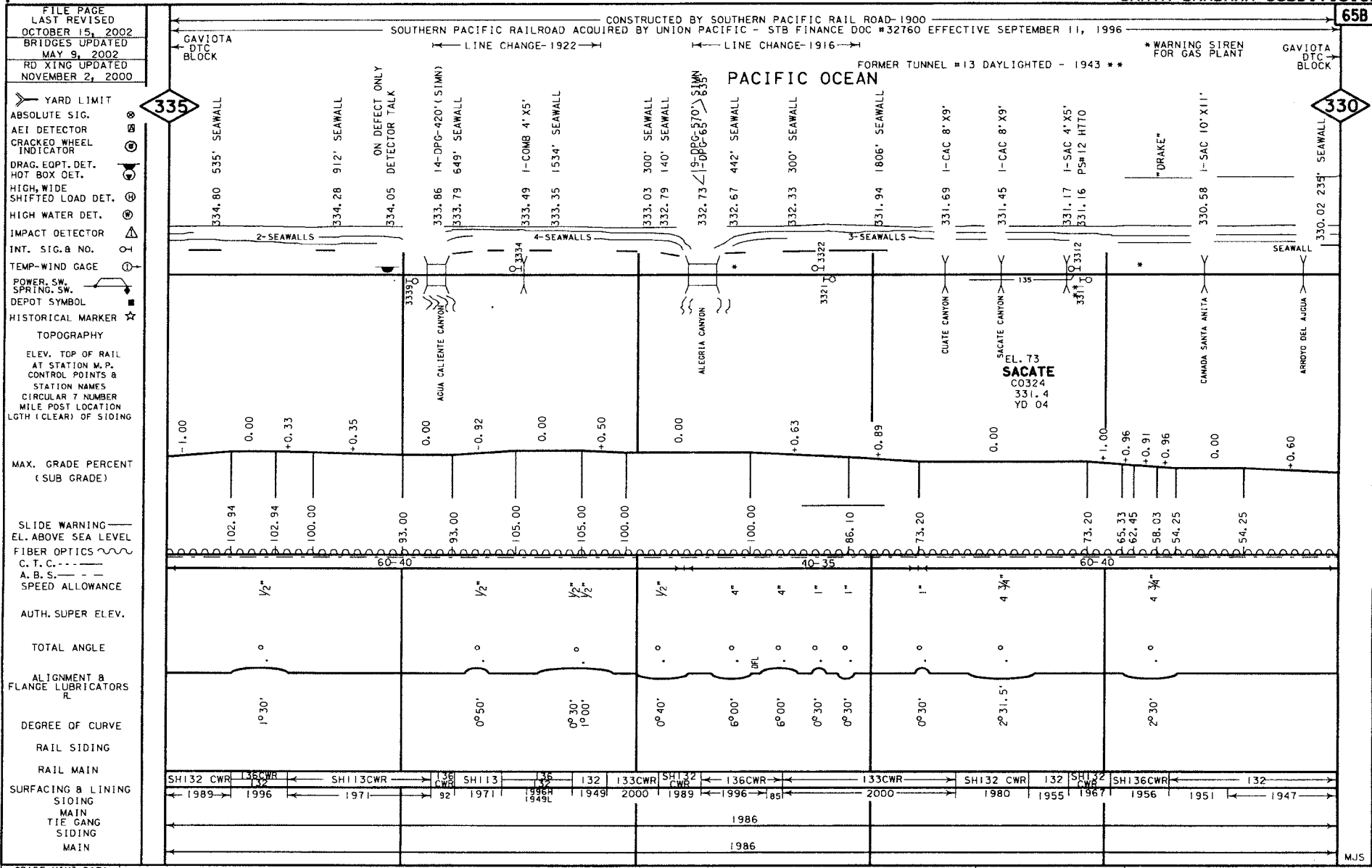
335



- GRADE XING DATA
- BUCK
- BELL
- FLASHER
- GATES
- W/CS WAG
- TRAFFIC SIGNAL
- STOP SIGN
- CANTILEVER

NO ROAD CROSSINGS

MJS



GRADE XING DATA
X-BUCK
BELL
FLASHER
GATES
WIG WAG
TRAFFIC SIGNAL
STOP SIGN
CANTILEVER

FILE PAGE
LAST REVISED
SEPTEMBER 17, 2002
BRIDGES UPDATED
MAY 9, 2002
ROAD XING UPDATED
FEBRUARY 21, 2002

SOUTHERN PACIFIC RAILROAD ACQUIRED BY UNION PACIFIC - STB FINANCE DOC #32760 EFFECTIVE SEPTEMBER 11, 1996

← GAVIOTA
DTC
BLOCK

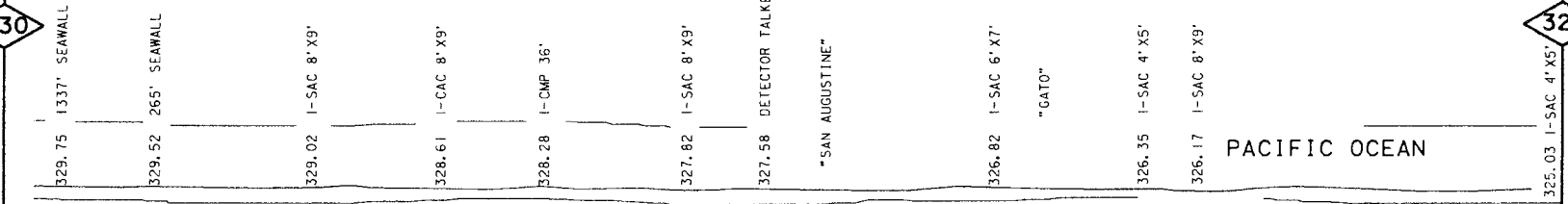
GAVIOTA
DTC
BLOCK →

* WARNING SIREN FOR
GAS PLANT

- YARD LIMIT
- ABSOLUTE SIG.
- AEI DETECTOR
- CRACKED WHEEL INDICATOR
- DRAG. EQPT. DET.
- HOT BOX DET.
- HIGH, WIDE
- SHIFTED LOAD DET.
- HIGH WATER DET.
- IMPACT DETECTOR
- INT. SIG. B NO.
- TEMP-WIND GAGE
- POWER, SW.
- SPRING, SW.
- DEPOT SYMBOL
- HISTORICAL MARKER

330

325



PACIFIC OCEAN

- TOPOGRAPHY
- ELEV. TOP OF RAIL AT STATION M.P.
- CONTROL POINTS &
- STATION NAMES
- CIRCULAR 7 NUMBER
- MILE POST LOCATION
- LGTH (CLEAR) OF SIDING

MAX. GRADE PERCENT
(SUB GRADE)

- SLIDE WARNING
- EL. ABOVE SEA LEVEL
- FIBER OPTICS
- C. T. C. ---
- A. B. S. ---
- SPEED ALLOWANCE

AUTH. SUPER ELEV.

TOTAL ANGLE

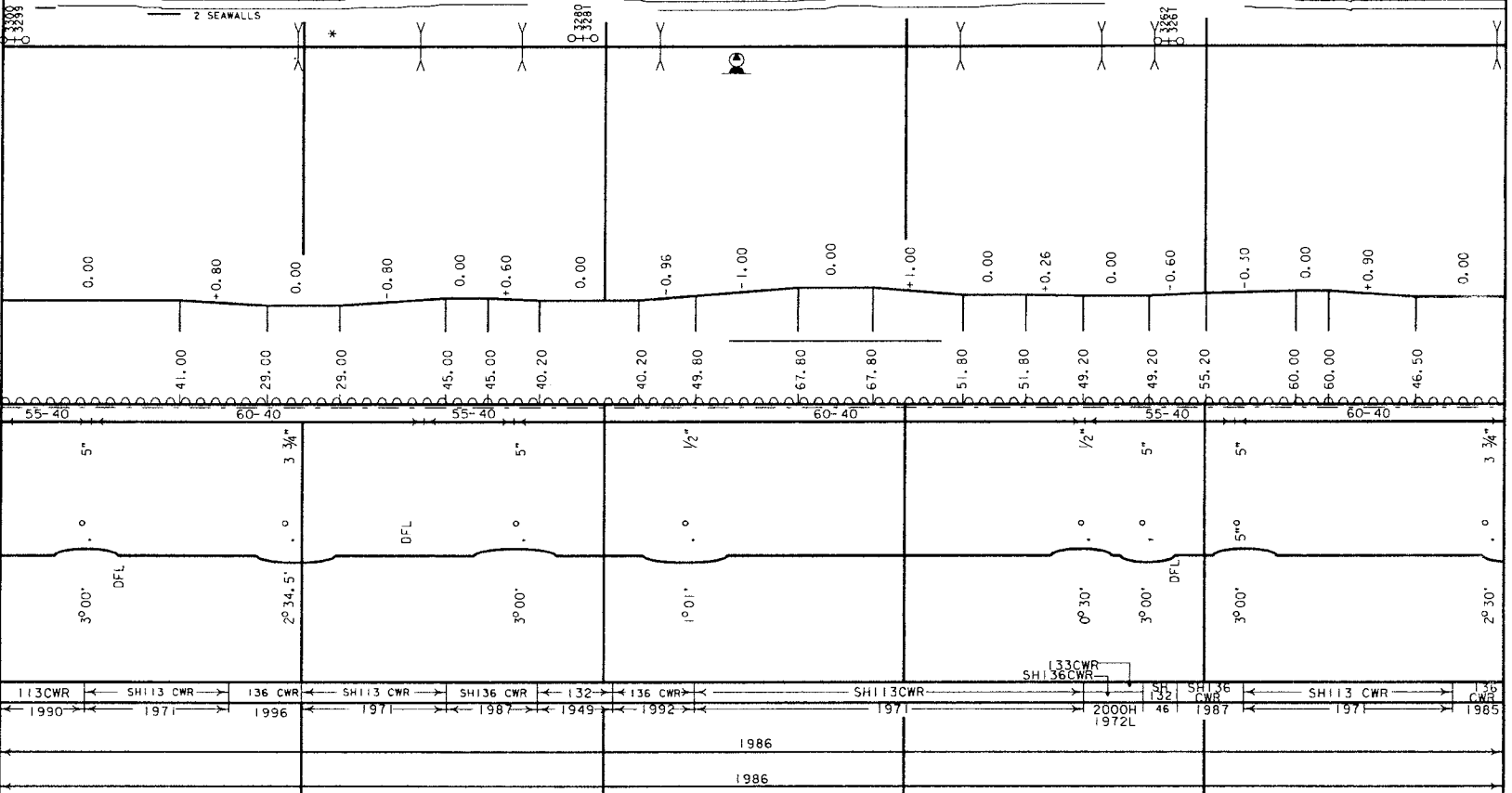
ALIGNMENT &
FLANGE LUBRICATORS

DEGREE OF CURVE

RAIL SIDING

RAIL MAIN

SURFACING & LINING
SIDING
MAIN
TIE GANG
SIDING
MAIN



- GRADE XING DATA
- X-BUCK
- BELL
- FLASHER
- GATES
- WTC WAG
- TRAFFIC SIGNAL
- STOP SIGN
- CANTILEVER

PRIVATES

PRIVATES

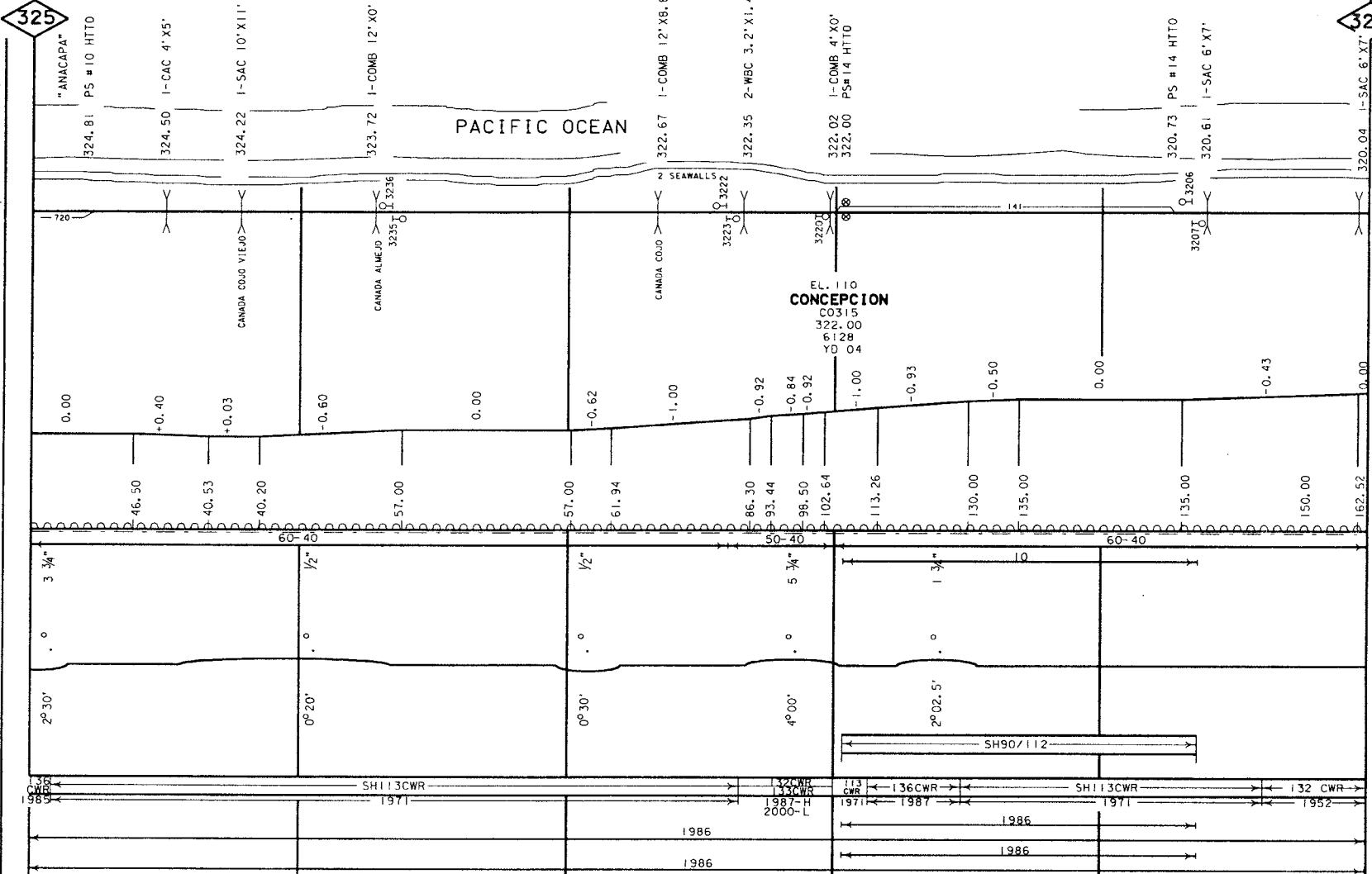
PRIVATES

JOX

FILE PAGE
LAST REVISED
SEPTEMBER 18, 2002
BRIDGES UPDATED
MAY 9, 2002
RD XING UPDATED
NOVEMBER 2, 2000

SOUTHERN PACIFIC RAILROAD CONSTRUCTED BY SOUTHERN PACIFIC RAIL ROAD-1900
ACQUIRED BY UNION PACIFIC - STB FINANCE DOC #32760 EFFECTIVE SEPTEMBER 11, 1996

- YARD LIMIT
- ABSOLUTE SIG.
- AEI DETECTOR
- CRACKED WHEEL INDICATOR
- DRAG. EQPT. DET.
- HOT BOX DET.
- HIGH, WIDE SHIFTED LOAD DET.
- HIGH WATER DET.
- IMPACT DETECTOR
- INT. SIG. & NO.
- TEMP-WIND GAGE
- POWER, SW. SPRING, SW.
- DEPOT SYMBOL
- HISTORICAL MARKER
- TOPOGRAPHY
 - ELEV. TOP OF RAIL AT STATION M.P.
 - CONTROL POINTS & STATION NAMES
 - CIRCULAR 7 NUMBER
 - MILE POST LOCATION
 - LGTH (CLEAR) OF SIDING
- MAX. GRADE PERCENT (SUB GRADE)
- SLIDE WARNING
- EL. ABOVE SEA LEVEL
- FIBER OPTICS
- C. T. C.
- A. B. S.
- SPEED ALLOWANCE
- AUTH. SUPER ELEV.
- TOTAL ANGLE
- ALIGNMENT & FLANGE LUBRICATORS
- DEGREE OF CURVE
- RAIL SIDING
- RAIL MAIN
- SURFACING & LINING
 - SIDING
 - MAIN
 - TIE GANG
 - SIDING
 - MAIN



GRADE XING DATA
X-BUCK
BELL
FLASHER
GATES
WIG WAG
TRAFFIC SIGNAL
STOP SIGN
CANTILEVER

PRIVATE UNION OIL CO-BF PRIVATE-S PRIVATE-S PRIVATE-S PRIVATE-S

FILE PAGE
LAST REVISED
SEPTEMBER 18, 2002
BRIDGES UPDATED
MAY 9, 2002
RD XING UPDATED
NOVEMBER 20, 2000

CONSTRUCTED BY SOUTHERN PACIFIC RR - 1899
SOUTHERN PACIFIC RAILROAD ACQUIRED BY UNION PACIFIC - STB FINANCE DOC #3276Q EFFECTIVE SEPTEMBER 11, 1996
CONST. BY SOUTHERN PACIFIC RR - 1898

CONCEPCION DTC BLOCK
CONCEPCION DTC BLOCK
SUDDEN DTC BLOCK
SUDDEN DTC BLOCK

- YARD LIMIT
- ABSOLUTE SIG.
- AEI DETECTOR
- CRACKED WHEEL INDICATOR
- DRAG. EOPT. DET.
- HOT BOX DET.
- HIGH, WIDE SHIFTED LOAD DET.
- HIGH WATER DET.
- IMPACT DETECTOR
- INT. SIG. & NO.
- TEMP-WIND GAGE
- POWER, SW. SPRING, SW.
- DEPOT SYMBOL
- HISTORICAL MARKER

TOPOGRAPHY
ELEV. TOP OF RAIL
AT STATION M.P.
CONTROL POINTS &
STATION NAMES
CIRCULAR T NUMBER
MILE POST LOCATION
LGTH (CLEAR) OF SIDING

MAX. GRADE PERCENT
(SUB GRADE)

SLIDE WARNING
EL. ABOVE SEA LEVEL
FIBER OPTICS
C. T. C.
A. B. S.
SPEED ALLOWANCE

AUTH. SUPER ELEV.

TOTAL ANGLE

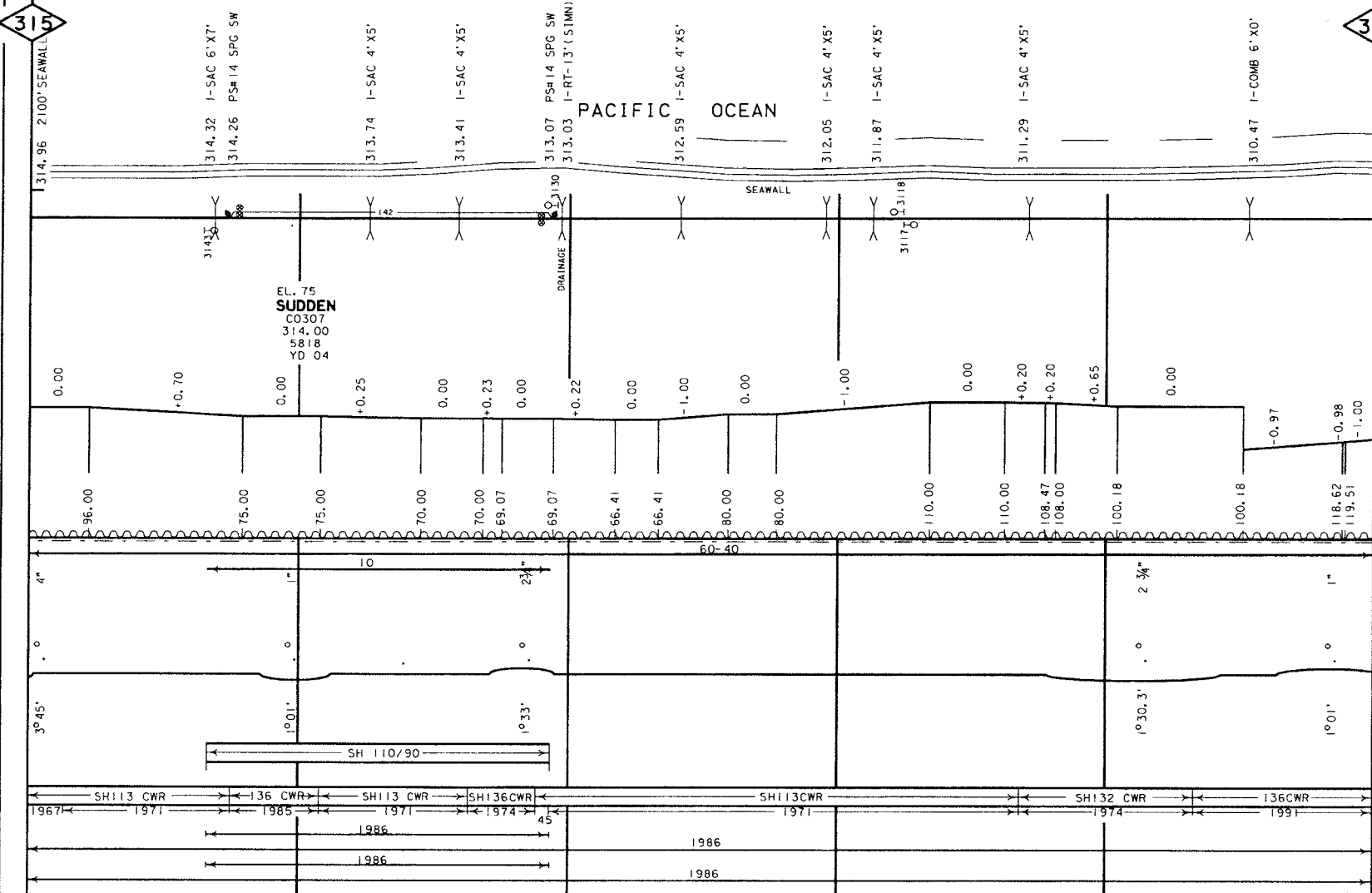
ALIGNMENT & FLANGE LUBRICATORS

DEGREE OF CURVE

RAIL SIDING

RAIL MAIN

SURFACING & LINING
SIDING
MAIN
TIE GANG
SIDING
MAIN



315

310

GRADE XING DATA
X-BUCK
BELL
FLASHER
GATES
WIG WAG
TRAFFIC SIGNAL
STOP SIGN
CANTILEVER

PRIVATE-S

PRIVATE-S

JOK

FILE PAGE
LAST REVISED
SEPTEMBER 18, 2002
BRIDGES UPDATED
MAY 16, 2001
RD XING UPDATED
OCTOBER 9, 2000

SOUTHERN PACIFIC RAILROAD ACQUIRED BY UNION PACIFIC - STB FINANCE DOC #32760 EFFECTIVE SEPTEMBER 11, 1996
CONSTRUCTED BY SOUTHERN PACIFIC RR - 1899
SUDDEN DTC BLOCK
LINE CHANGE-1949
LINE CHANGE-1928
SUDDEN DTC BLOCK

- YARD LIMIT
- ABSOLUTE SIG.
- AEI DETECTOR
- CRACKED WHEEL INDICATOR
- DRAG. EQPT. DET.
- HOT BOX DET.
- HIGH, WIDE SHIFTED LOAD DET.
- HIGH WATER DET.
- IMPACT DETECTOR
- INT. SIG. & ND.
- TEMP-WIND GAGE
- POWER, SW. SPRING, SW.
- DEPOT SYMBOL
- HISTORICAL MARKER

TOPOGRAPHY
ELEV. TOP OF RAIL AT STATION W.P. CONTROL POINTS & STATION NAMES
CIRCULAR 7 NUMBER
MILE POST LOCATION
LGTH (CLEAR) OF SIDING

MAX. GRADE PERCENT (SUB GRADE)

SLIDE WARNING
EL. ABOVE SEA LEVEL
FIBER OPTICS
C, T, C, ---
A, B, S, ---
SPEED ALLOWANCE

AUTH. SUPER ELEV.

TOTAL ANGLE

ALIGNMENT & FLANGE LUBRICATORS

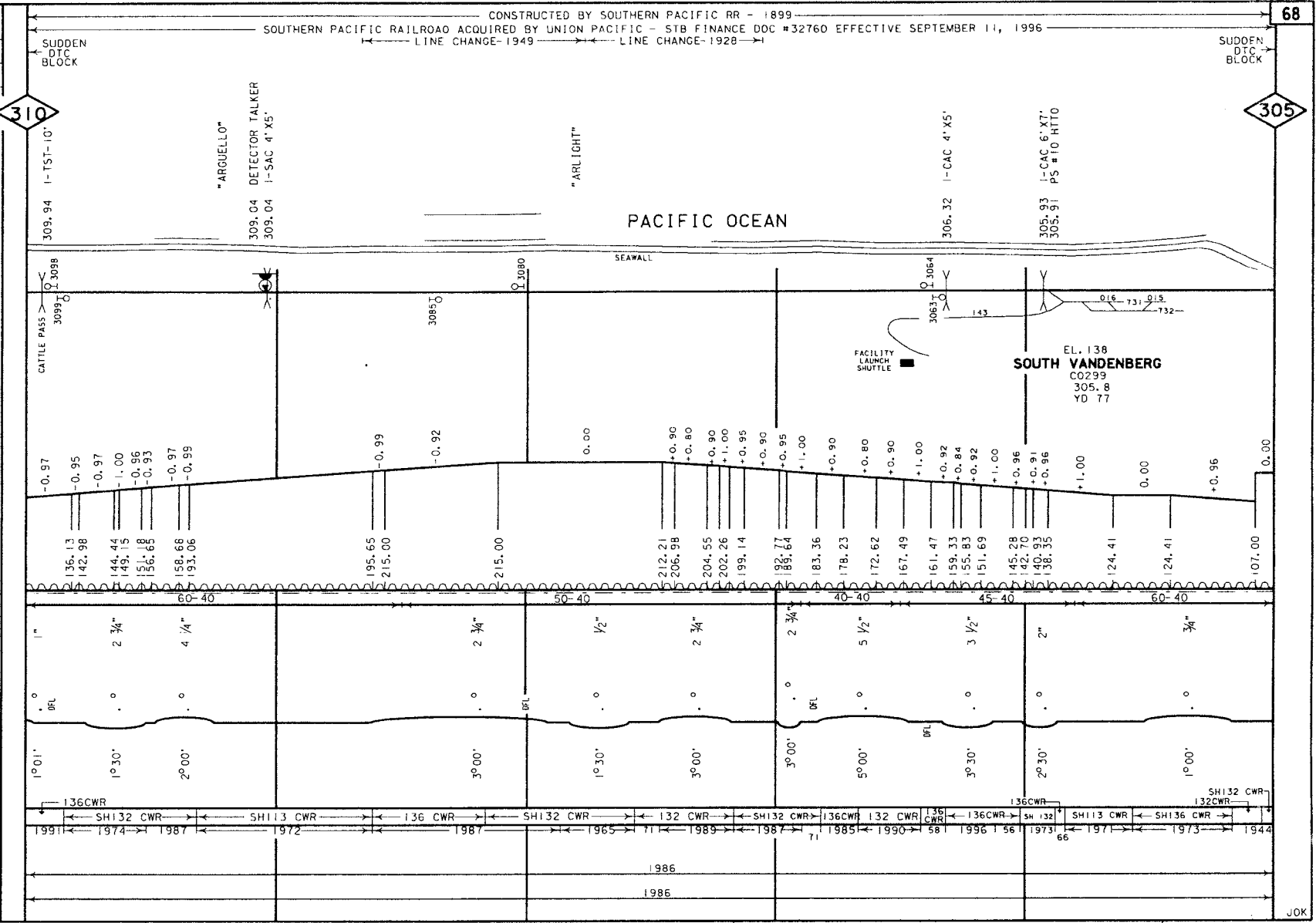
DEGREE OF CURVE

RAIL SIDING

RAIL MAIN

SURFACING & LINING
SIDING MAIN
TIE GANG
SIDING MAIN

GRADE XING DATA
X-BUCK
BELL
FLASHER
GATES
WIG WAC
TRAFFIC SIGNAL
STOP SIGN
CANTILEVER

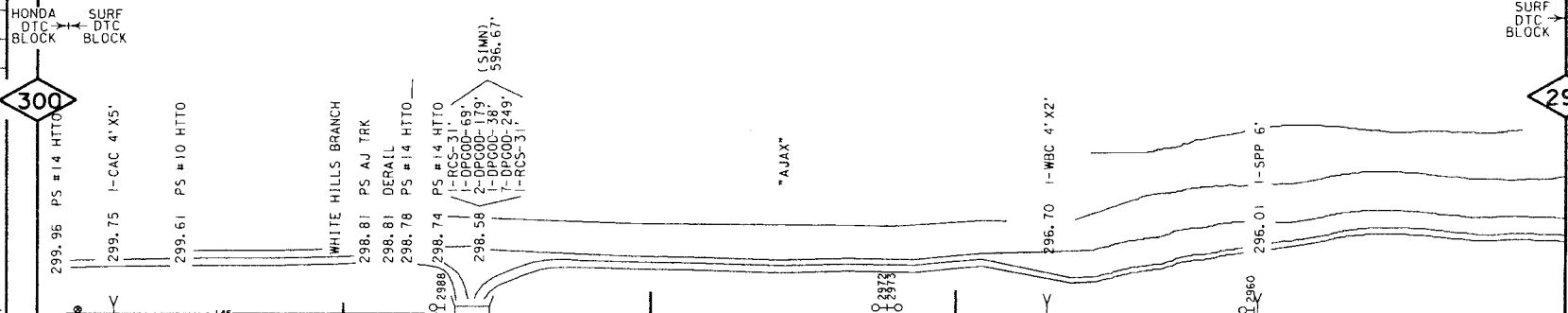


310

305

FILE PAGE
LAST REVISED
SEPTEMBER 18, 2002
BRIDGES UPDATED
MAY 8, 2002
RD XING UPDATED
NOVEMBER 20, 2000

SOUTHERN PACIFIC RAILROAD ACQUIRED BY UNION PACIFIC - STB FINANCE DOC #32760 EFFECTIVE SEPTEMBER 11, 1996



- YARD LIMIT
- ABSOLUTE SIG.
- AE1 DETECTOR
- CRACKED WHEEL INDICATOR
- DRAG. EQPT. DET.
- HOT BOX DET.
- HIGH, WIDE SHIFTED LOAD DET.
- HIGH WATER DET.
- IMPACT DETECTOR
- INT. SIG. B NO.
- TEMP-WIND GAGE
- POWER, SW. SPRING, SW.
- DEPOT SYMBOL
- HISTORICAL MARKER

TOPOGRAPHY
ELEV. TOP OF RAIL AT STATION M.P.
CONTROL POINTS & STATION NAMES
CIRCULAR 7 NUMBER
MILE POST LOCATION
LGTH (CLEAR) OF SIDING

MAX. GRADE PERCENT (SUB GRADE)

SLIDE WARNING
EL. ABOVE SEA LEVEL
FIBER OPTICS
C. T. C. ---
A, B, S. ---
SPEED ALLOWANCE

AUTH. SUPER ELEV.

TOTAL ANGLE

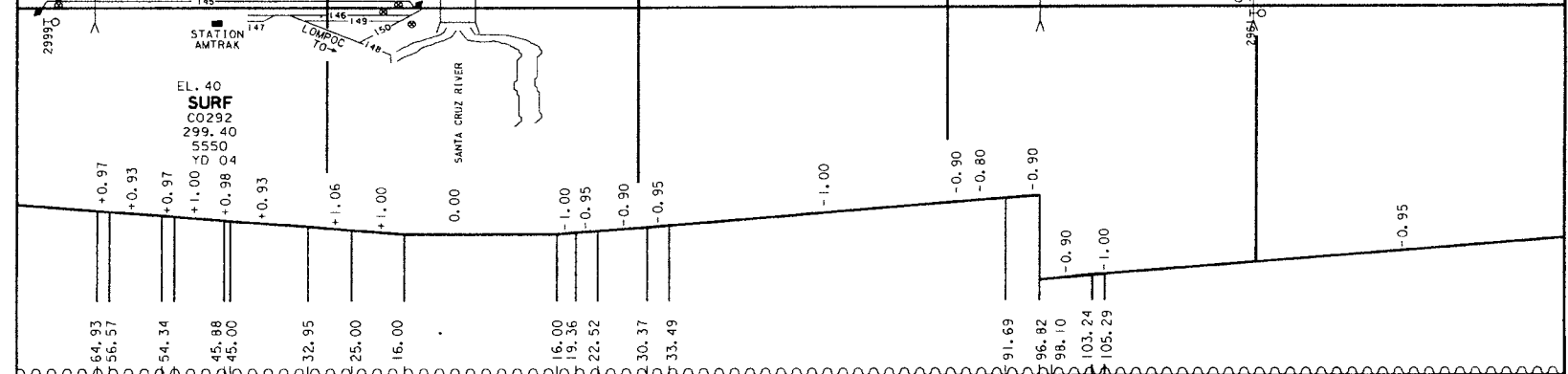
ALIGNMENT & FLANGE LUBRICATORS

DEGREE OF CURVE

RAIL SIDING

RAIL MAIN

SURFACING & LINING
SIDING MAIN
TIE GANG SIDING MAIN



64.93	56.57	54.34	45.88	45.00	32.95	25.00	16.00	16.00	19.36	22.52	30.37	33.49	91.69	96.82	99.10	103.24	105.29	91.69	96.82	99.10	103.24	105.29	
+0.97	+0.93	+0.97	+1.00	+0.98	+0.93	+1.06	+1.00	0.00	-1.00	-0.95	-0.90	-0.95	-1.00	-0.90	-0.80	-0.90	-1.00	-0.90	-0.90	-0.80	-0.90	-1.00	-0.95
60'-40"	10'	60'-40"	60'-40"	60'-40"	60'-40"	60'-40"	60'-40"	60'-40"	60'-40"	60'-40"	60'-40"	60'-40"	60'-40"	60'-40"	60'-40"	60'-40"	60'-40"	60'-40"	60'-40"	60'-40"	60'-40"	60'-40"	60'-40"
2 1/2"	1/2"	1/2"	1/2"	1/2"	1/2"	1/2"	1/2"	1/2"	1/2"	1/2"	1/2"	1/2"	1/2"	1/2"	1/2"	1/2"	1/2"	1/2"	1/2"	1/2"	1/2"	1/2"	1/2"
0	0	0	0	0	0	0	0	0	0	0	0	0	0	0	0	0	0	0	0	0	0	0	0
2°00'	1°00'	2°00'	1°00'	1°00'	1°00'	1°00'	1°00'	1°00'	1°00'	1°00'	1°00'	1°00'	1°00'	1°00'	1°00'	1°00'	1°00'	1°00'	1°00'	1°00'	1°00'	1°00'	1°00'
SH 113CWR	SH 113CWR	SH 113CWR	SH 113CWR	SH 113CWR	SH 113CWR	SH 113CWR	SH 113CWR	SH 113CWR	SH 113CWR	SH 113CWR	SH 113CWR	SH 113CWR	SH 113CWR	SH 113CWR	SH 113CWR	SH 113CWR	SH 113CWR	SH 113CWR	SH 113CWR	SH 113CWR	SH 113CWR	SH 113CWR	SH 113CWR
1971	1987	1987	1982	1971	1955	741	1961	1996	1972	1985	1992	1971	1963	2002									
	1986		1986																				

GRADE XING DATA
X-BUCK
BELL
FLASHER
GATES
W/C WAC
TRAFFIC SIGNAL
STOP SIGN
CANTILEVER

USAF PRIVATE-BFC

JOK

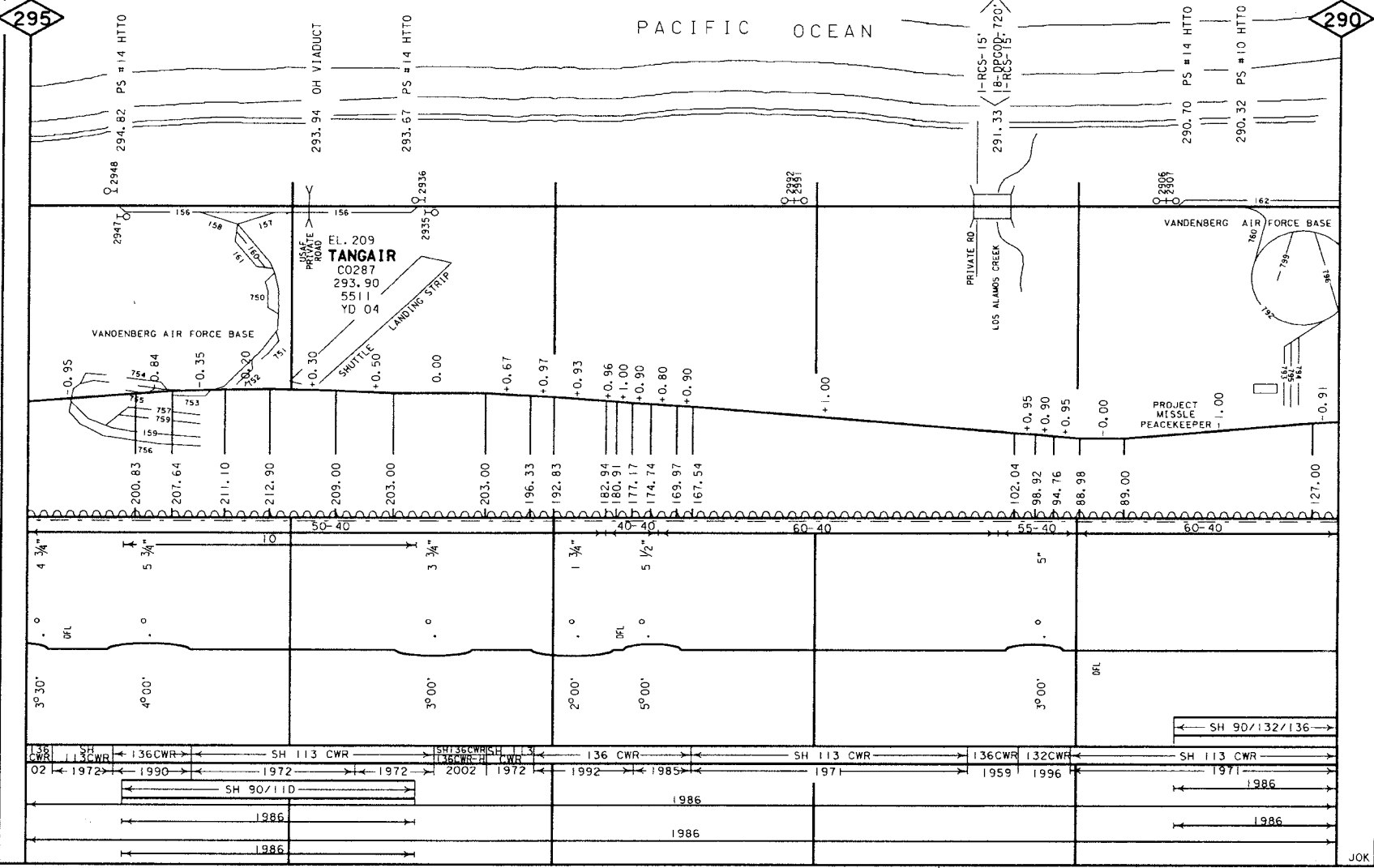
FILE PAGE
LAST REVISED
SEPTEMBER 16, 2002
BRIDGES UPDATED
MAY 8, 2002
RD XING UPDATED
NOVEMBER 20, 2000

SURF TANGAIR
DTC DTC
BLOCK BLOCK

CONSTRUCTED BY SOUTHERN PACIFIC RAILROAD - 1896
ACQUIRED BY UNION PACIFIC - STB FINANCE DOC #32760 EFFECTIVE SEPTEMBER 11, 1996

TANGAIR NARLON
DTC DTC
BLOCK BLOCK

- YARD LIMIT
- ABSOLUTE SIG.
- AEI DETECTOR
- CRACKED WHEEL INDICATOR
- DRAG. EOPT. DET.
- HOT BOX DET.
- HIGH, WIDE SHIFTEO LOAD DET.
- HIGH WATER DET.
- IMPACT DETECTOR
- INT. SIG. & NO.
- TEMP-WIND GAGE
- POWER. SW.
- SPRING SW.
- DEPOT SYMBOL
- HISTORICAL MARKER
- TOPOGRAPHY
- ELEV. TOP OF RAIL AT STATION M.P.
- CONTROL POINTS & STATION NAMES
- CIRCULAR 7 NUMBER
- MILE POST LOCATION
- LGTH (CLEAR) OF SIDING
- MAX. GRADE PERCENT (SUB GRADE)
- SLIDE WARNING
- EL. ABOVE SEA LEVEL
- FIBER OPTICS
- C. T. C.
- A. B. S.
- SPEED ALLOWANCE
- AUTH. SUPER ELEV.
- TOTAL ANGLE
- ALIGNMENT & FLANGE LUBRICATORS
- DEGREE OF CURVE
- RAIL SIDING
- RAIL MAIN
- SURFACING & LINING
- SIDING MAIN
- TIE GANG SIDING
- MAIN



GRADE XING DATA
X-BUCK
BELL
FLASHER
GATE
WIG WAG
TRAFFIC SIGNAL
STOP SIGN
CANTILEVER

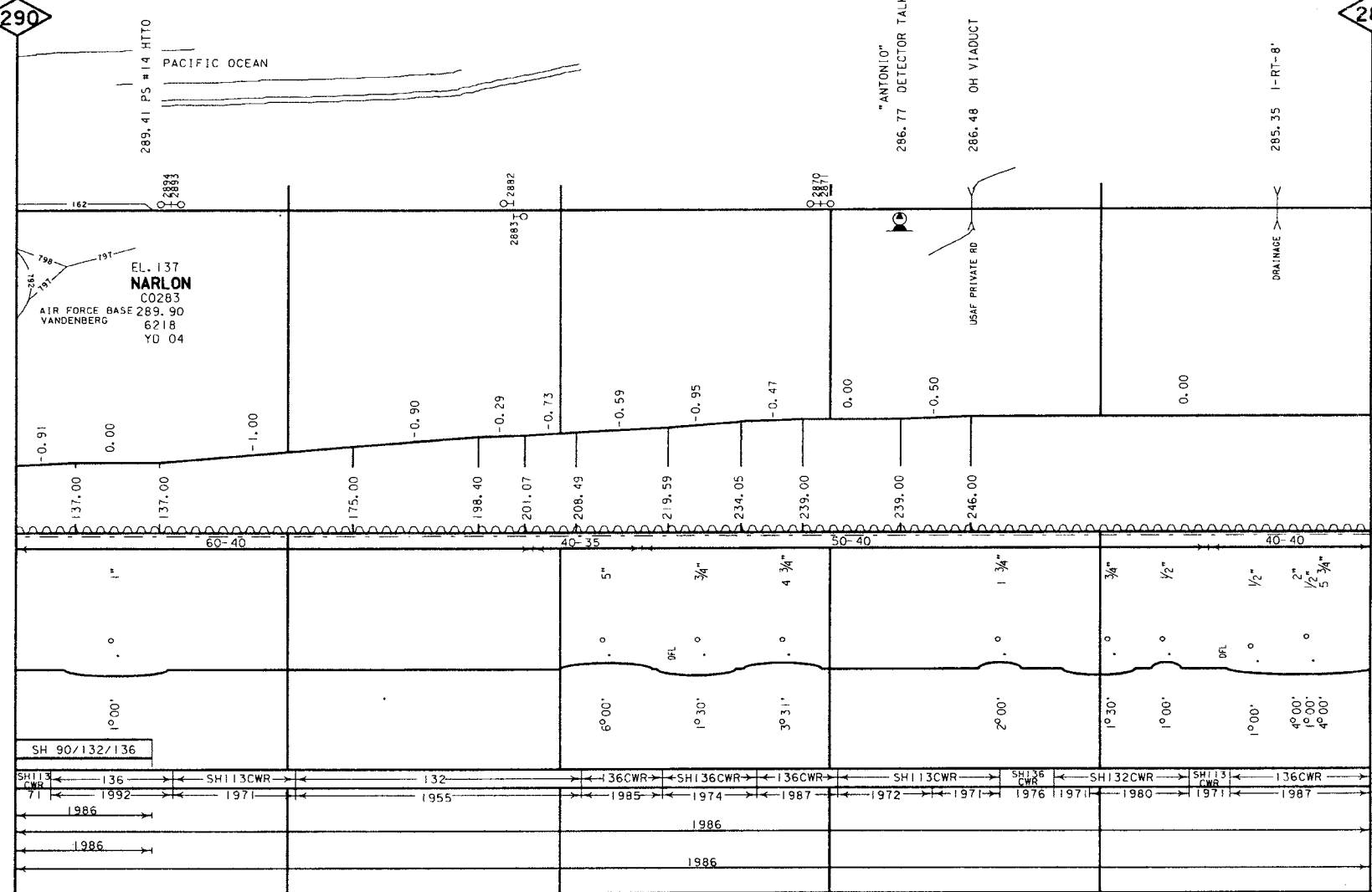
USAF PRIVATE

JOK

FILE PAGE
LAST REVISED
SEPTEMBER 18, 2002
BRIDGES UPDATED
MAY 16, 2001
ROAD XING UPDATED
NOVEMBER 20, 2000

SOUTHERN PACIFIC RAILROAD CONSTRUCTED BY SOUTHERN PACIFIC RAILROAD - 1896
NARLON DTC BLOCK
NARLON DTC BLOCK
EFFECTIVE SEPTEMBER 11, 1996

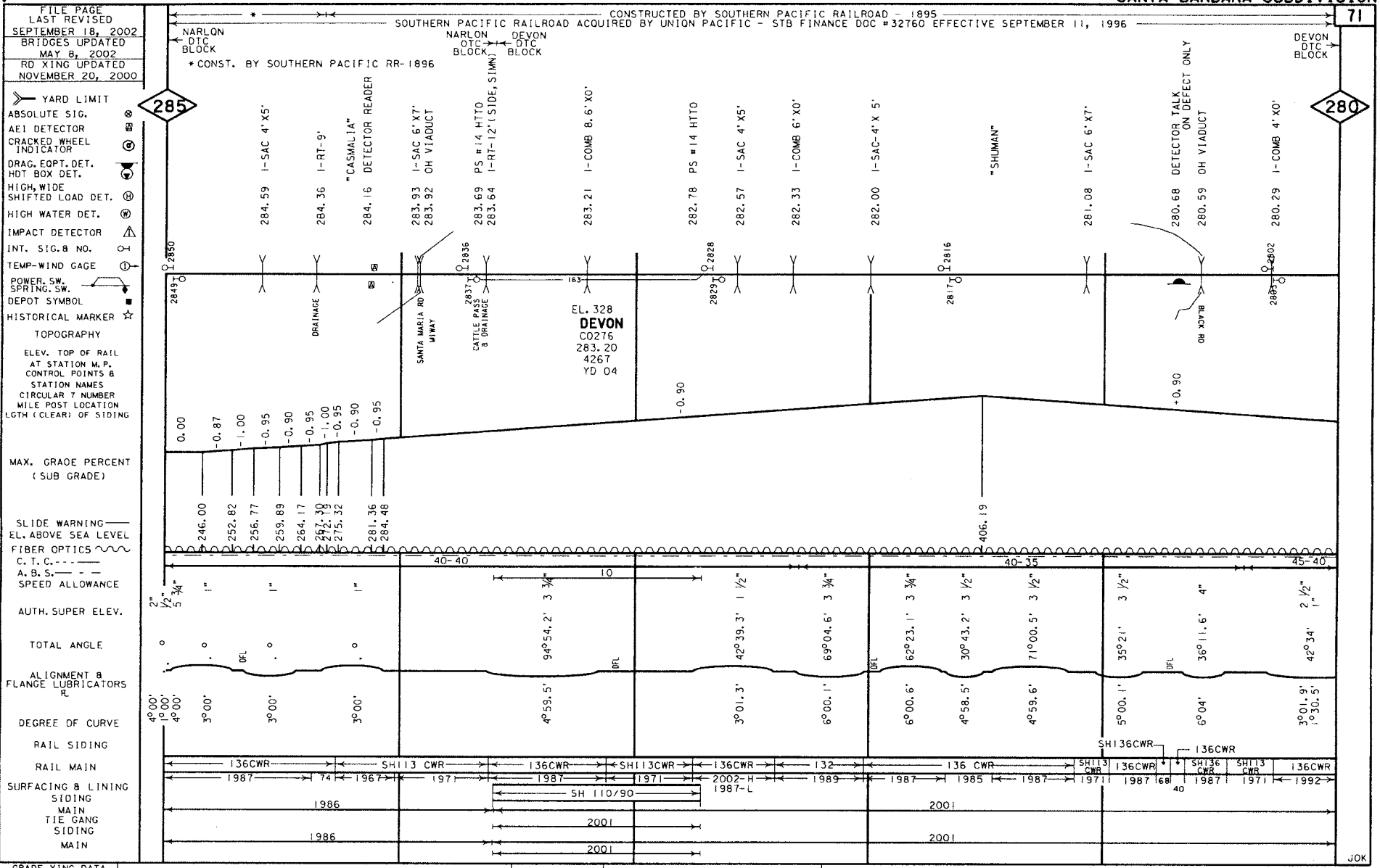
- YARD LIMIT
- ABSOLUTE SIG.
- AEI DETECTOR
- CRACKED WHEEL INDICATOR
- DRAG. EDPT. DET.
- HOT BOX DET.
- HIGH, WIDE SHIFTED LOAD DET.
- HIGH WATER DET.
- IMPACT DETECTOR
- INT. SIG. B NO.
- TEMP-WIND GAGE
- POWER, SW. SPRING, SW.
- DEPOT SYMBOL
- HISTORICAL MARKER
- TOPOGRAPHY
- ELEV. TOP OF RAIL AT STATION W.P.
- CONTROL POINTS & STATION NAMES
- CIRCULAR 7 NUMBER
- MILE POST LOCATION
- LGTH (CLEAR) OF SIDING
- MAX. GRADE PERCENT (SUB GRADE)
- SLIDE WARNING
- EL. ABOVE SEA LEVEL
- FIBER OPTICS
- C. T. C.
- A. B. S.
- SPEED ALLOWANCE
- AUTH. SUPER ELEV.
- TOTAL ANGLE
- ALIGNMENT & FLANGE LUBRICATORS
- DEGREE OF CURVE
- RAIL SIDING
- RAIL MAIN
- SURFACING & LINING
- SIDING MAIN
- TIE GANG SIDING MAIN



GRADE XING DATA
X-BUCK
BELL
FLASHER
GATES
WIG WAG
TRAFFIC SIGNAL
STOP SIGN
CANTILEVER

PRIVATE

JOK



FILE PAGE
LAST REVISED
SEPTEMBER 18, 2002
BRIDGES UPDATED
MAY 8, 2002
RD XING UPDATED
NOVEMBER 20, 2000

YARD LIMIT
ABSOLUTE SIG.
AE1 DETECTOR
CRACKED WHEEL
INDICATOR
DRAG. EQPT. DET.
HOT BOX DET.
HIGH, WIDE
SHIFTED LOAD DET.
HIGH WATER DET.
IMPACT DETECTOR
INT. SIG. & NO.
TEMP-WIND GAGE
POWER. SW.
SPRING. SW.
DEPOT SYMBOL
HISTORICAL MARKER

TOPOGRAPHY
ELEV. TOP OF RAIL
AT STATION M.P.
CONTROL POINTS &
STATION NAMES
CIRCULAR 7 NUMBER
MILE POST LOCATION
LGTH (CLEAR) OF SIDING

MAX. GRADE PERCENT
(SUB GRADE)

SLIDE WARNING
EL. ABOVE SEA LEVEL
FIBER OPTICS
C. T. C. ---
A. B. S. ---
SPEED ALLOWANCE

AUTH. SUPER ELEV.

TOTAL ANGLE

ALIGNMENT &
FLANGE LUBRICATORS

DEGREE OF CURVE

RAIL SIDING

RAIL MAIN

SURFACING & LINING

SIDING
MAIN
TIE GANG
SIDING
MAIN

GRADE XING DATA
X = X-BUCK
B = BELL
F = FLASHER
G = GATES
W = WIG WAG
T = TRAFFIC SIGNAL
S = STOP SIGN
C = CANTILEVER

RIGETTI RD-PVT-87C

ASSOCIATED RD-87C

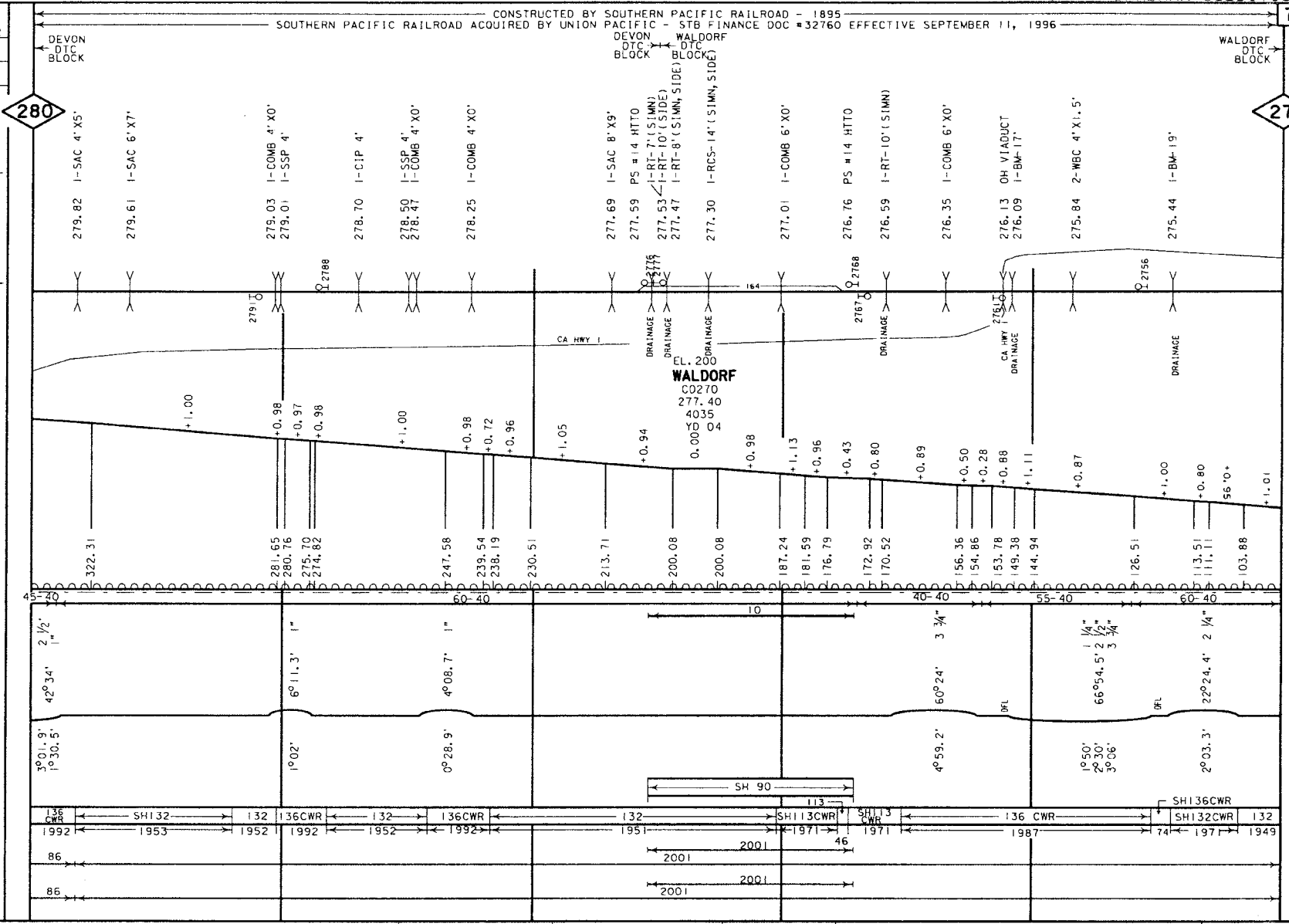
PRIVATE-#

JOK

FILE PAGE
LAST REVISED
SEPTEMBER 18, 2002
BRIDGES UPDATED
MAY 8, 2002
RD XING UPDATED
AUGUST 14, 2000

CONSTRUCTED BY SOUTHERN PACIFIC RAILROAD - 1895
SOUTHERN PACIFIC RAILROAD ACQUIRED BY UNION PACIFIC - STB FINANCE DOC #32760 EFFECTIVE SEPTEMBER 11, 1996

YARD LIMIT
ABSOLUTE SIG.
AEI DETECTOR
CRACKED WHEEL INDICATOR
DRAG. EQPT. DET.
HOT BOX DET.
HIGH, WIDE SHIFTED LOAD DET.
HIGH WATER DET.
IMPACT DETECTOR
INT. SIG. B NO.
TEMP-WIND GAGE
POWER, SW. SPRING, SW.
DEPOT SYMBOL
HISTORICAL MARKER
TOPOGRAPHY
ELEV. TOP OF RAIL AT STATION M.P.
CONTROL POINTS & STATION NAMES
CIRCULAR 7 NUMBER
MILE POST LOCATION
LGTH (CLEAR) OF SIDING
MAX. GRADE PERCENT (SUB GRADE)
SLIDE WARNING
EL. ABOVE SEA LEVEL
FIBER OPTICS
C. T. C.
A. B. S.
SPEED ALLOWANCE
AUTH. SUPER ELEV.
TOTAL ANGLE
ALIGNMENT & FLANGE LUBRICATORS
DEGREE OF CURVE
RAIL SIDING
RAIL MAIN
SURFACING & LINING
SIDING
MAIN
TIE GANG
SIDING
MAIN



280

275

GRADE XING DATA
X-BUCK
BELL
FLASHER
GATES
WTC WAG
TRAFFIC SIGNAL
STOP SIGN
CANTILEVER

PRIVATE-S

PRIVATE-S

PRIVATE-S

PRIVATE-S

BROWN RD-BFG

JOK

FILE PAGE
LAST REVISED
SEPTEMBER 18, 2002
BRIDGES UPDATED
MAY 9, 2002
RD XING UPDATED
AUGUST 14, 2000

SOUTHERN PACIFIC RAILROAD CONSTRUCTED BY SOUTHERN PACIFIC RAILROAD - 1895
ACQUIRED BY UNION PACIFIC - STB FINANCE DOC #32760 EFFECTIVE SEPTEMBER 11, 1996

- YARD LIMIT
- ABSOLUTE SIG.
- AEI DETECTOR
- CRACKED WHEEL INDICATOR
- ORAG. EQPT. DET.
- HOT BOX DET.
- HIGH WIDE SHIFTED LOAD DET.
- HIGH WATER DET.
- IMPACT DETECTOR
- INT. SIG. & NO.
- TEMP-WIND GAGE
- POWER, SW. SPRING, SW.
- DEPOT SYMBOL
- HISTORICAL MARKER

TOPOGRAPHY
ELEV. TOP OF RAIL
AT STATION M.P.
CONTROL POINTS &
STATION NAMES
CIRCULAR 7 NUMBER
MILE POST LOCATION
LGTH (CLEAR) OF SIDING

MAX. GRADE PERCENT
(SUB GRADE)

SLIDE WARNING
EL. ABOVE SEA LEVEL
FIBER OPTICS
C. T. C. ---
A. B. S. ---
SPEED ALLOWANCE

AUTH. SUPER ELEV.

TOTAL ANGLE

ALIGNMENT &
FLANGE LUBRICATORS
R

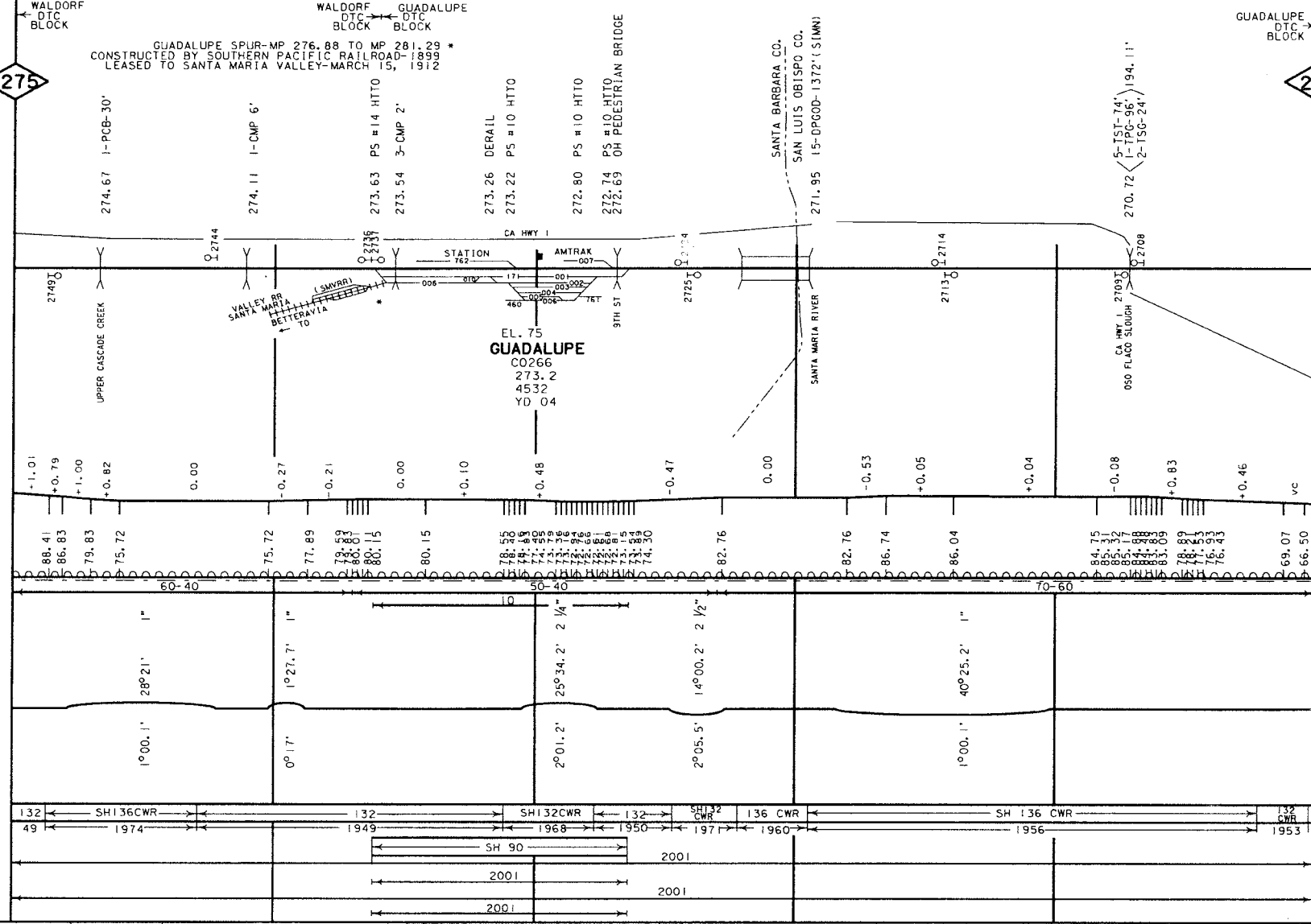
DEGREE OF CURVE

RAIL SIDING

RAIL MAIN

SURFACING & LINING
SIDING
MAIN
TIE GANG
SIDING
MAIN

GRADE XING DATA
X = BUCK
B = BELL
F = FLASHER
G = GATES
W = W/O WAG
S = STOP SIGN
C = CANTILEVER



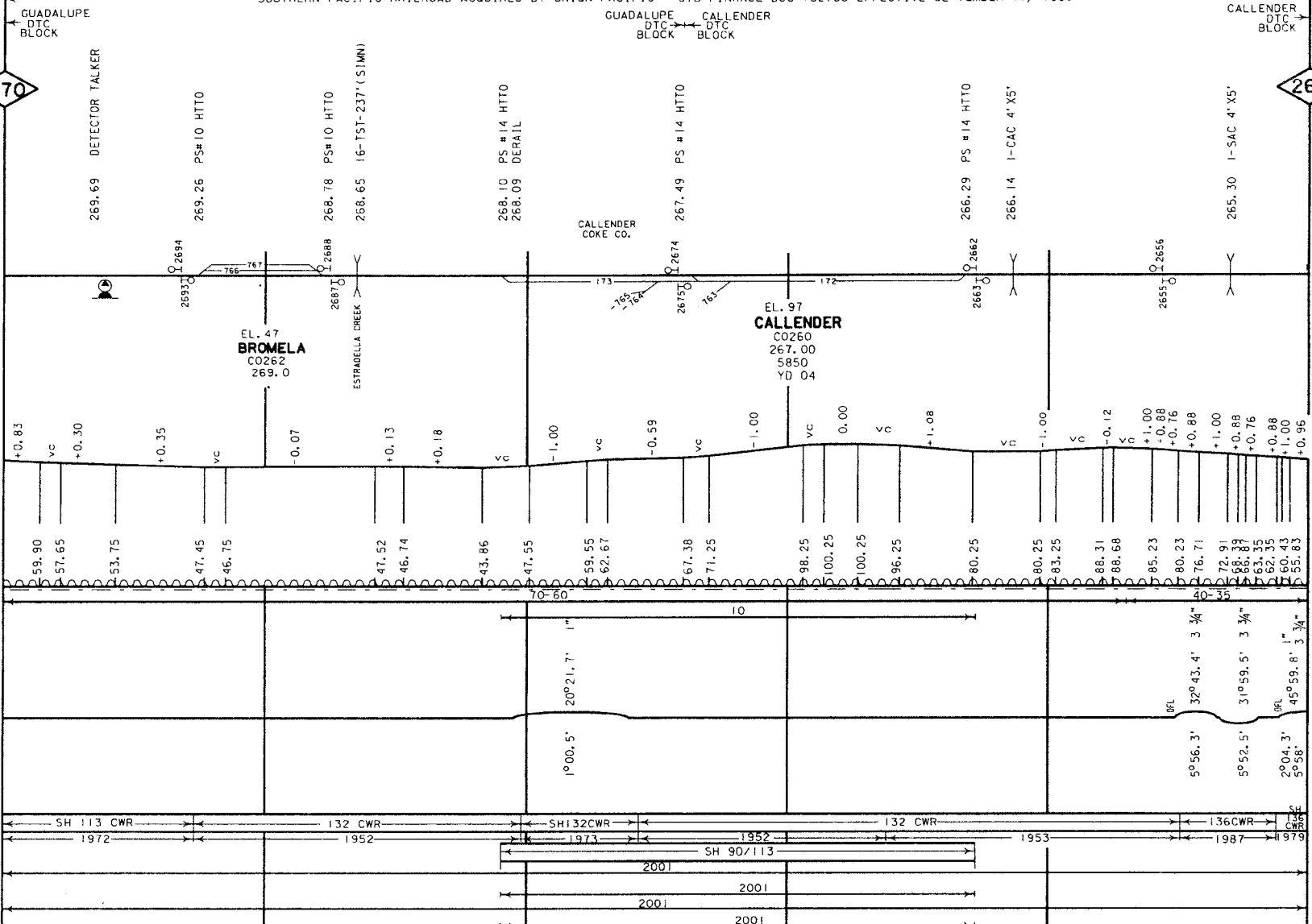
275

270

JOK

FILE PAGE
LAST REVISED
SEPTEMBER 18, 2002
BRIDGES UPDATED
MAY 8, 2002
RD XING UPDATED
NOVEMBER 20, 2000

SOUTHERN PACIFIC RAILROAD - CONSTRUCTED BY SOUTHERN PACIFIC RAILROAD - 1895
SOUTHERN PACIFIC RAILROAD ACQUIRED BY UNION PACIFIC - STB FINANCE DOC #32760 EFFECTIVE SEPTEMBER 11, 1996



270 **265**
 GUADALUPE DTC BLOCK
 CALLENDER DTC BLOCK
 YARD LIMIT
 ABSOLUTE SIG.
 AE1 DETECTOR
 CRACKED WHEEL INDICATOR
 DRAG. EQPT. DET.
 HOT BOX DET.
 HIGH, WIDE SHIFTED LOAD DET.
 HIGH WATER DET.
 IMPACT DETECTOR
 INT. SIG. & NO.
 TEMP-WIND GAGE
 POWER, SW. SPRING, SW.
 DEPOT SYMBOL
 HISTORICAL MARKER ☆
 TOPOGRAPHY
 ELEV. TOP OF RAIL AT STATION M.P.
 CONTROL POINTS & STATION NAMES
 CIRCULAR 7 NUMBER
 MILE POST LOCATION
 LGTH (CLEAR) OF SIDING
 MAX. GRADE PERCENT (SUB GRADE)
 SLIDE WARNING
 EL. ABOVE SEA LEVEL
 FIBER OPTICS
 C. T. C. ---
 A. B. S. ---
 SPEED ALLOWANCE
 AUTH. SUPER ELEV.
 TOTAL ANGLE
 ALIGNMENT & FLANGE LUBRICATORS
 DEGREE OF CURVE
 RAIL SIDING
 RAIL MAIN
 SURFACING & LINING
 SIDING MAIN
 TIE GANG SIDING MAIN

GRADE XING DATA
 X-BUCK
 BELL
 FLASHER
 GATES
 WID WAG
 TRAFFIC SIGNAL
 STOP SIGN
 CANTILEVER

OSD FLAG REF-REG

UNION GULL PVT-1-S

DONES LANE PVT-1-S

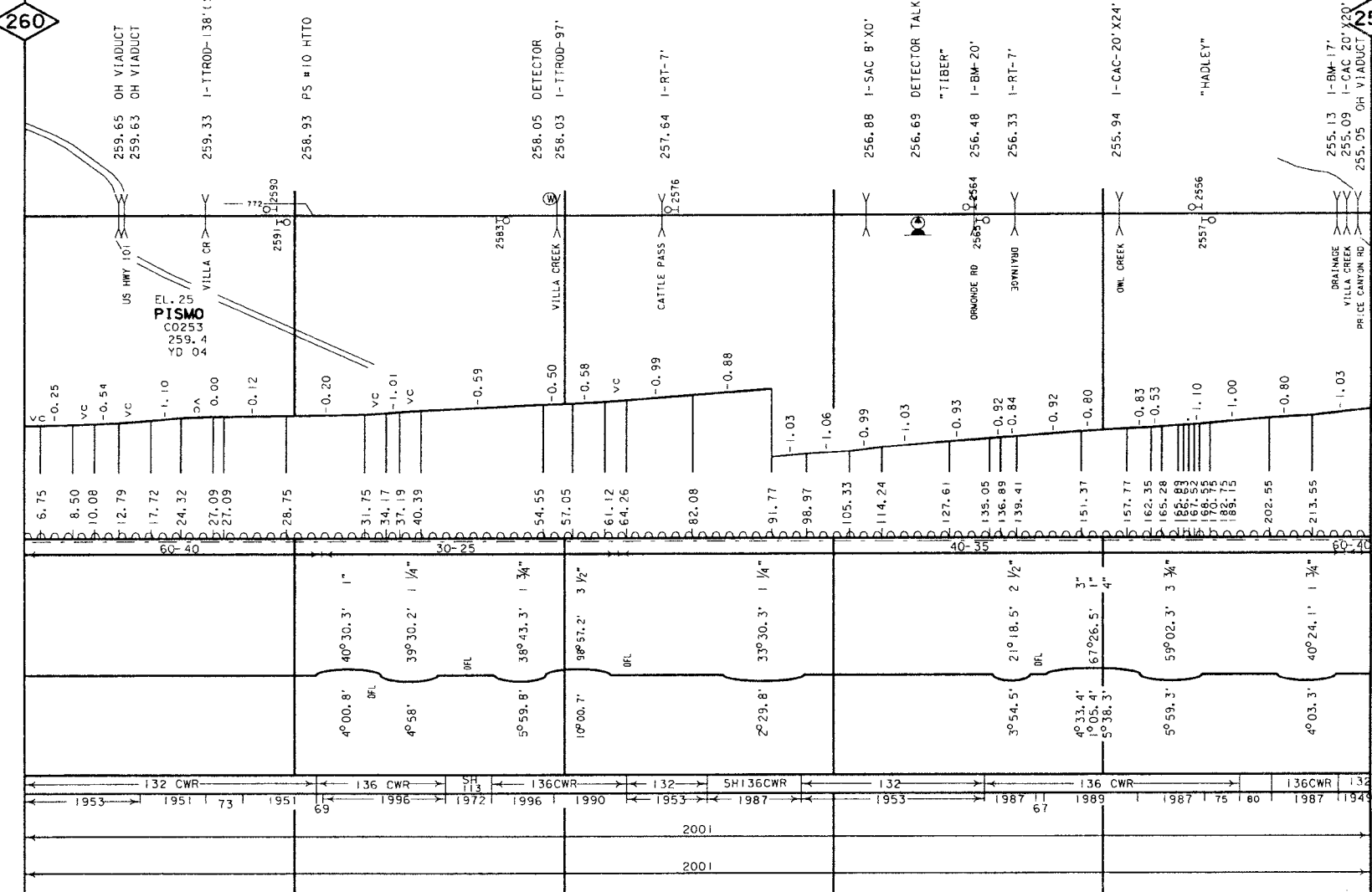
JKK

FILE PAGE
LAST REVISED
SEPTEMBER 16, 2002
BRIDGES UPDATED
MAY 16, 2001
RD XING UPDATED
NOVEMBER 21, 2000

CONSTRUCTED BY SOUTHERN PACIFIC RAILROAD - 1895
SOUTHERN PACIFIC RAILROAD ACQUIRED BY UNION PACIFIC - STB FINANCE DOC #32760 EFFECTIVE SEPTEMBER 11, 1996

GROVER
DTC
BLOCK

- YARD LIMIT
- ABSOLUTE SIG.
- AEI DETECTOR
- CRACKED WHEEL INDICATOR
- DRAG. EOPT. DET.
- HOT BOX DET.
- HIGH, WIDE SHIFTED LOAD DET.
- HIGH WATER DET.
- IMPACT DETECTOR
- INT. SIG. B NO.
- TEMP-WIND GAGE
- POWER, SW.
- SPRING, SW.
- DEPOT SYMBOL
- HISTORICAL MARKER
- TOPOGRAPHY
- ELEV. TOP OF RAIL AT STATION W.P.
- CONTROL POINTS & STATION NAMES
- CIRCULAR 7 NUMBER
- MILE POST LOCATION
- LGTH (CLEAR) OF SIDING
- MAX. GRADE PERCENT (SUB GRADE)
- SLIDE WARNING
- E.L. ABOVE SEA LEVEL
- FIBER OPTICS
- C. T. C.
- A. B. S.
- SPEED ALLOWANCE
- AUTH. SUPER ELEV.
- TOTAL ANGLE
- ALIGNMENT B FLANGE LUBRICATORS
- DEGREE OF CURVE
- RAIL SIDING
- RAIL MAIN
- SURFACING & LINING
- SIDING MAIN
- TIE GANG
- SIDING MAIN



260

255

GRADE XING DATA
X = BUCK
B = BEL
H = FLASHER
G = GATES
W = WIG WAG
T = TRAFFIC SIGNAL
C = STOP SIGN
C = CANTILEVER

PRIVATE-S

PRIVATE-S

PRIVATE-S

JOK

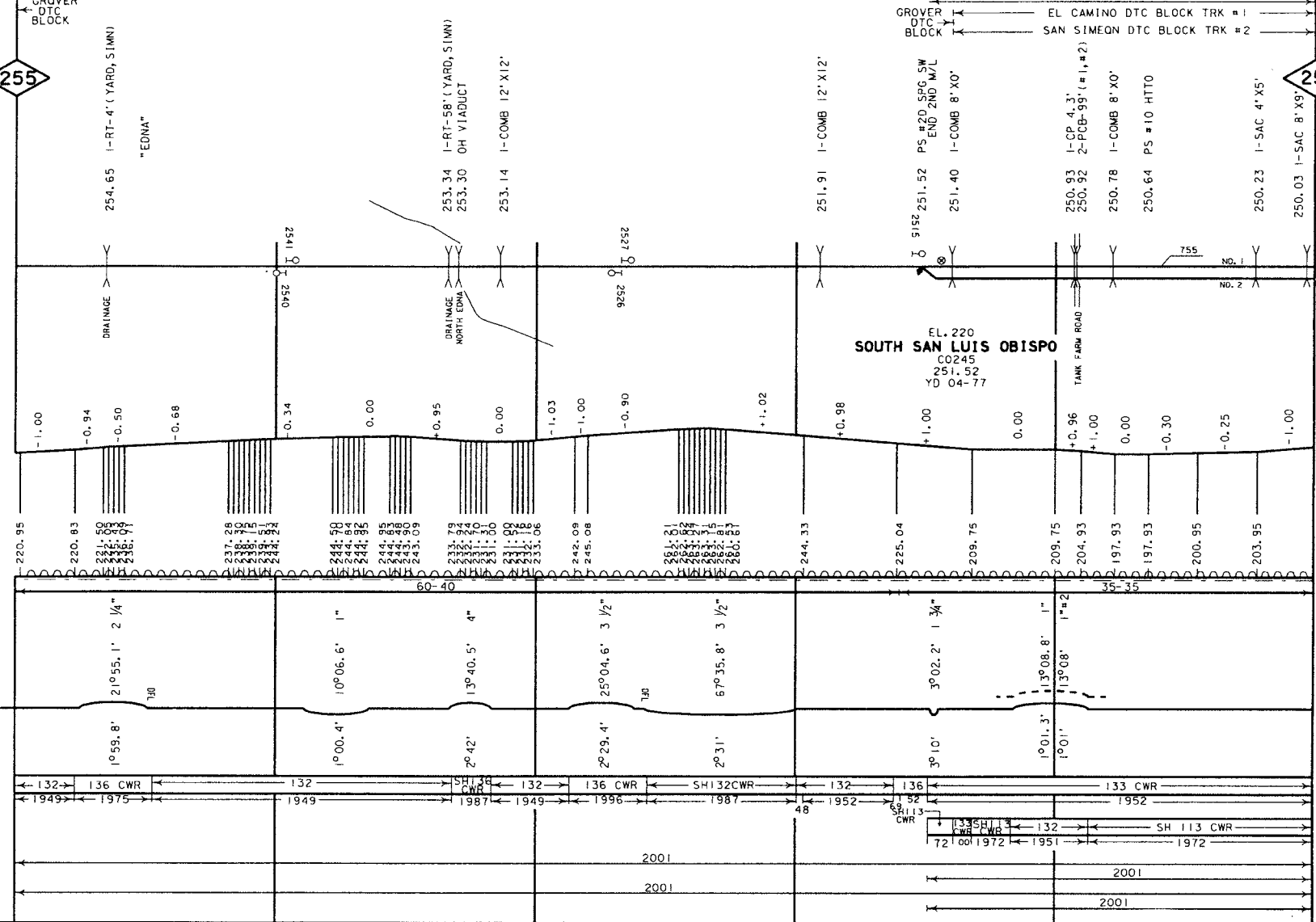
FILE PAGE
LAST REVISED
SEPTEMBER 16, 2002
BRIDGES UPDATED
MAY 16, 2001
RD XING UPDATED
NOVEMBER 21, 2000

SOUTHERN PACIFIC RAILROAD CONSTRUCTED BY SOUTHERN PACIFIC RAILROAD - 1895
ACQUIRED BY UNION PACIFIC - STB FINANCE DOC #32760 EFFECTIVE SEPTEMBER 11, 1996
← LINE CHANGE-1927 →

255

250

- YARD LIMIT
- ABSOLUTE SIG.
- AEI DETECTOR
- CRACKED WHEEL INDICATOR
- DRAG. COPT. DET.
- HOT BOX DET.
- HIGH, WIDE SHIFTED LOAD DET.
- HIGH WATER DET.
- IMPACT DETECTOR
- INT. SIG. B NO.
- TEMP-WIND GAGE
- POWER SW. SPRING SW.
- DEPOT SYMBOL
- HISTORICAL MARKER
- TOPOGRAPHY
- ELEV. TOP OF RAIL AT STATION W.P.
- CONTROL POINTS & STATION NAMES
- CIRCULAR 7 NUMBER
- MILE POST LOCATION
- LGTH (CLEAR) OF SIDING
- MAX. GRADE PERCENT (SUB GRADE)
- SLIDE WARNING
- EL. ABOVE SEA LEVEL
- FIBER OPTICS
- C. T. C.
- A. B. S.
- SPEED ALLOWANCE
- AUTH. SUPER ELEV.
- TOTAL ANGLE
- ALIGNMENT & FLANGE LUBRICATORS
- DEGREE OF CURVE
- RAIL SIDING
- RAIL MAIN
- SURFACING & LINING
- SIDING MAIN
- TIE GANG SIDING MAIN



GRADE XING DATA
X-BUCK
BEL
FLASHER
GATES
WIG WAC
TRAFFIC SIGNAL
STOP SIGN
CANTILEVER

PRIVATE-S

JOX

