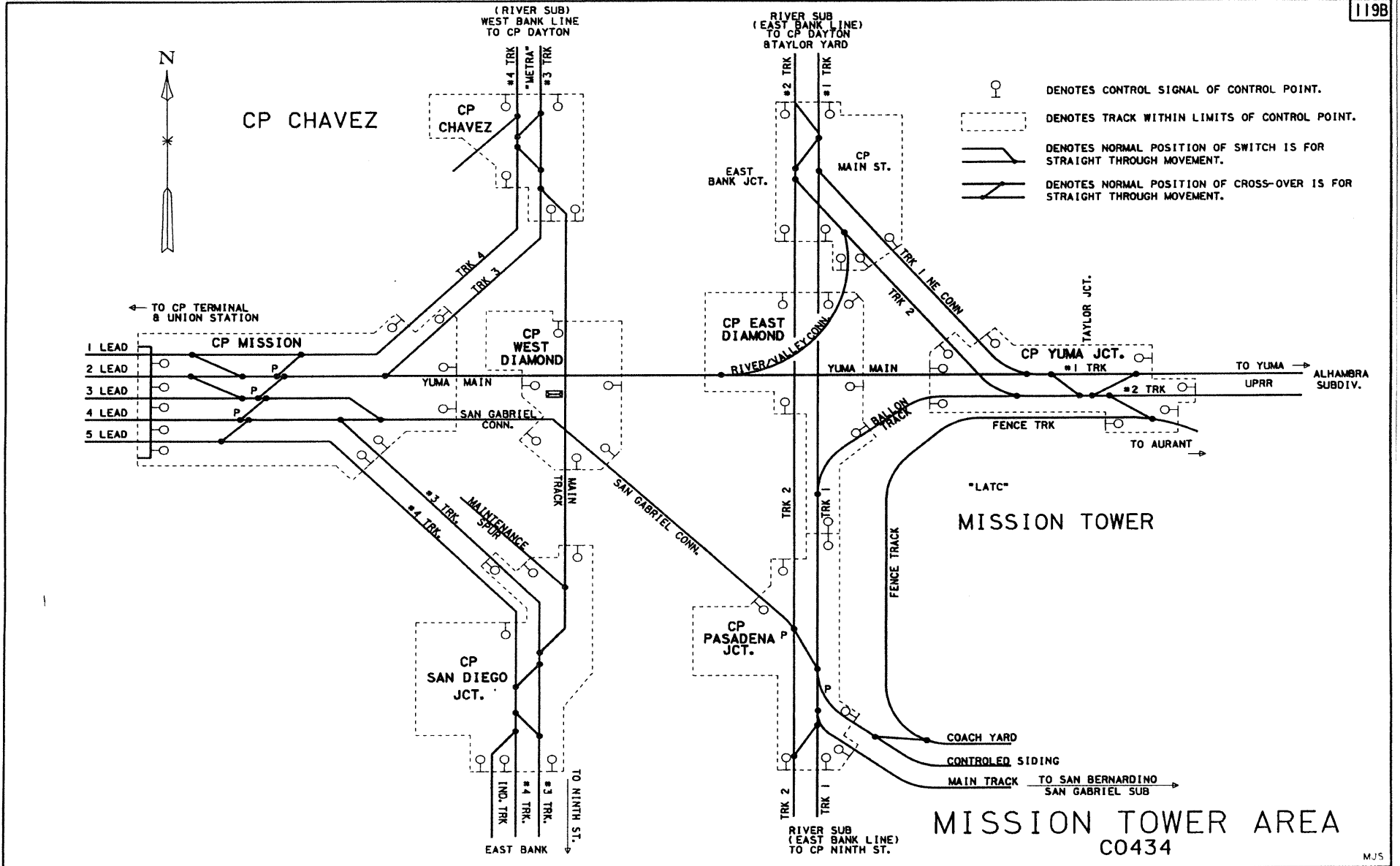


- DENOTES AUTOMATIC SIGNAL
- DENOTES CONTROL SIGNAL OF CONTROL POINT OR INTERLOCKING.
- ⋯ DENOTES TRACK WITHIN LIMITS OF CONTROL POINT OR INTERLOCKING.
- DENOTES NORMAL POSITION OF SWITCH IS FOR STRAIGHT THROUGH MOVEMENT.
- ⋈ DENOTES NORMAL POSITION OF CROSS-OVER IS FOR STRAIGHT THROUGH MOVEMENT.

CP TERMINAL



CONSTRUCTED BY THE SOUTHERN PACIFIC RAILROAD COMPANY (OF CALIFORNIA) - 1873
SOUTHERN PACIFIC RAILROAD ACQUIRED BY UNION PACIFIC - STB FINANCE DOC #32760 EFFECTIVE SEPTEMBER 11, 1996

- FILE PAGE
LAST REVISED
JUNE 4, 2002
- BRIDGES UPDATED
NOVEMBER 1, 2001
- ROAD XING UPDATED
APRIL 9, 2001
- YARD LIMIT
- ABSOLUTE SIG.
- AEI DETECTOR
- CRACKED WHEEL INDICATOR
- DRAG. EOPT. DET.
- HOT BOX DET.
- HIGH WIDE SHIFTED LOAD DET.
- HIGH WATER DET.
- IMPACT DETECTOR
- INT. SIG. & NO.
- TEMP-WIND GAGE
- POWER SW. SPRING SW.
- DEPOT SYMBOL
- HISTORICAL MARKER
- TOPOGRAPHY
- ELEV. TOP OF RAIL AT STATION M.P. CONTROL POINTS & STATION NAMES CIRCULAR 7 NUMBER MILE POST LOCATION LGTH (CLEAR) OF SIDING
- MAX. GRADE PERCENT (SUB GRADE)
- SLIDE WARNING
E.L. ABOVE SEA LEVEL
FIBER OPTICS
C. T. C.
A. B. S.
- NO. 1 TRACK SPEED ALLOWANCE
NO. 2 TRACK
- AUTH. SUPER ELEV.
- TOTAL ANGLE
- ALIGNMENT & FLANGE LUBRICATORS R
- DEGREE OF CURVE
- SIDING
- RAIL NO. 1 TRACK
NO. 2 TRACK
- SURFACING & LINING
SIDING
NO. 1 TRACK
NO. 2 TRACK
- TIE GANG
SIDING
NO. 1 TRACK
NO. 2 TRACK

- GRADE XING DATA
- X = X-BUCK
B = BELL
F = FLASHER
C = GATES
W = WIG WAC
T = TRAFFIC SIGNAL
S = STOP SIGN
C = CANTILEVER

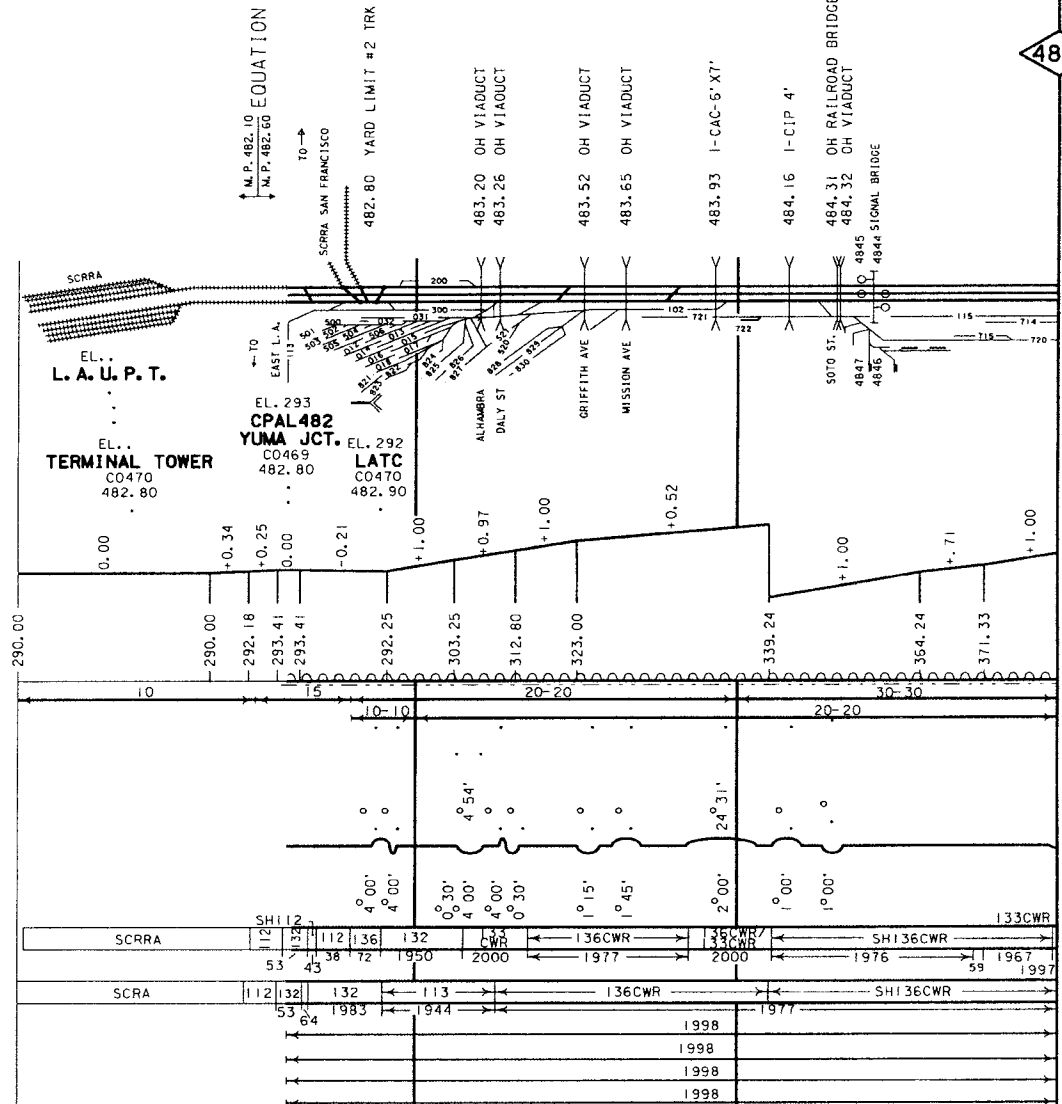
EL. MISSION TOWER
C0470

EL. L. A. U. P. T.

EL. TERMINAL TOWER
C0470
482.80

EL. 293 CPAL 482
C0469
482.80

EL. 292 LATC
C0470
482.90



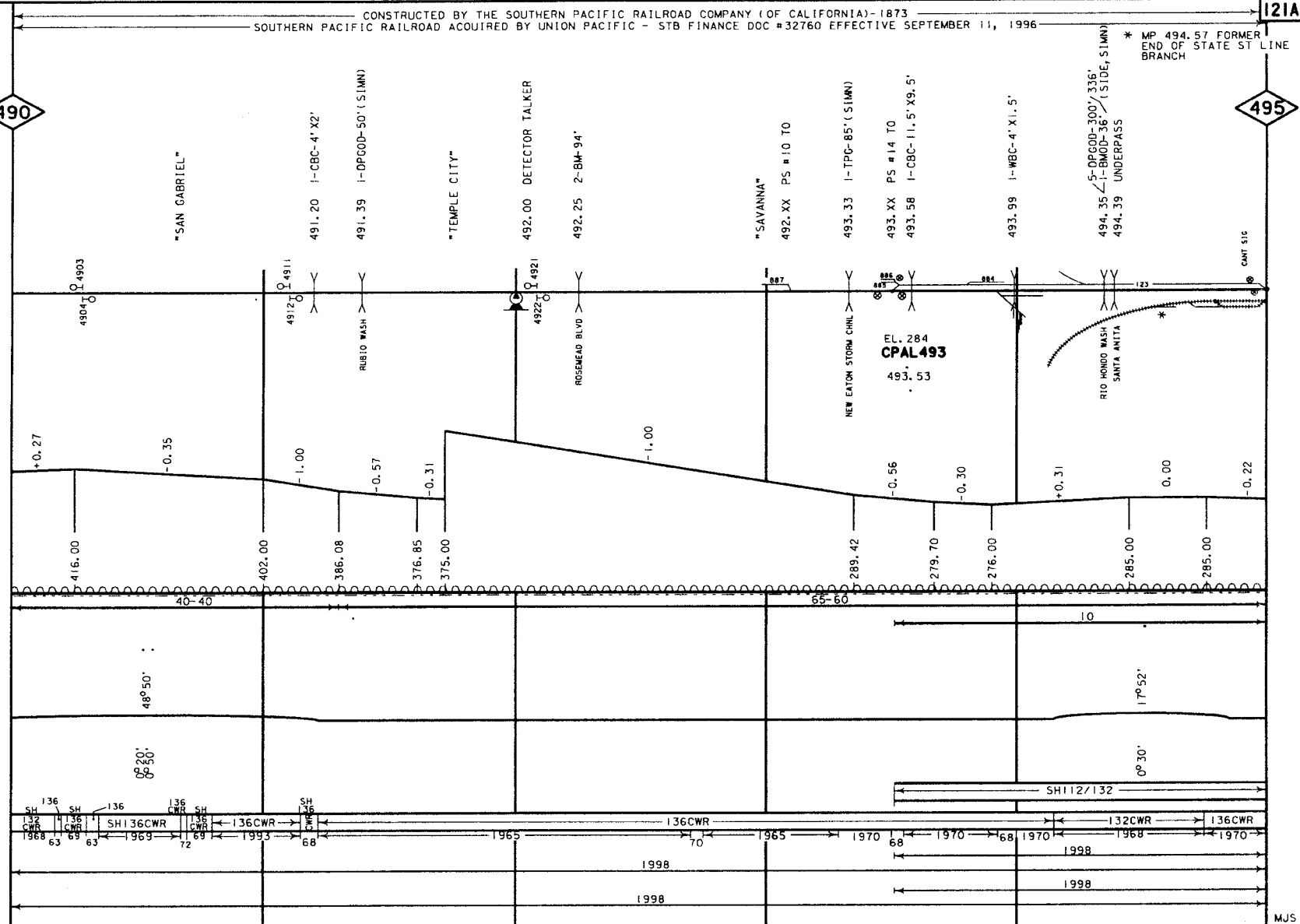
485

SAN PABLO ST. - BFG
TIMEBURN AVE - BFG
BOCCA AVE - BFG

FILE PAGE
LAST REVISED
APRIL 2, 2002
BRIDGES UPDATED
NOVEMBER 1, 2001
RD XING UPDATED
OCTOBER 10, 2000

490

495



- YARD LIMIT
- ABSOLUTE SIG.
- AEI DETECTOR
- CRACKED WHEEL INDICATOR
- DRAG. EOPT. DET. HOT BOX DET.
- HIGH, WIDE SHIFTED LOAD DET.
- HIGH WATER DET.
- IMPACT DETECTOR
- INT. SIG. & NO.
- TEMP-WIND GAGE
- POWER SW. SPRING SW.
- DEPOT SYMBOL
- HISTORICAL MARKER
- TOPOGRAPHY
- ELEV. TOP OF RAIL AT STATION M.P., CONTROL POINTS & STATION NAMES
- CIRCULAR 7 NUMBER
- MILE POST LOCATION
- LGTH (CLEAR) OF SINGING
- MAX. GRADE PERCENT (SUB GRADE)
- SLIDE WARNING
- EL. ABOVE SEA LEVEL
- FIBER OPTICS
- C. T. C. ---
- A. B. S. ---
- SPEED ALLOWANCE
- AUTH. SUPER ELEV.
- TOTAL ANGLE
- ALIGNMENT & FLANGE LUBRICATORS
- DEGREE OF CURVE
- RAIL SIDING
- RAIL MAIN
- SURFACING & LINING
- SIDING
- MAIN
- TIE GANG
- SIDING
- MAIN

GRADE XING DATA
BUCK
BELL
FLASHER
GATES
WIG WAG
TRAFFIC SIGNAL
STOP SIGN
CANTILEVER

- RAMONA BLVD-BFC
- MISSION DR-BFC
- DEL MAR AVE-BFC
- SAN GABRIEL BLVD-BFC
- WALNUT GROVE AVE-BFC
- ENCINITA BLVD-BFC
- LOWER
- AZUSA RD-BFC
- TEMPLE CITY BLVD-BFC
- BALDWIN AVE-BFC
- ARDEN DR-BFC
- ITLER ST-BFC
- CYPRESS AVE-BFC

FILE PAGE
LAST REVISED
APRIL 2, 2002
BRIDGES UPDATED
NOVEMBER 5, 2001
RD XING UPDATED
JANUARY 2, 2000

SOUTHERN PACIFIC RAILROAD ACQUIRED BY UNION PACIFIC - STB FINANCE DOC #32760 EFFECTIVE SEPTEMBER 11, 1996
** MP 497.45 FORMER
COVINA BRANCH

- YARD LIMIT
- ABSOLUTE SIG.
- AE1 DETECTOR
- CRACKED WHEEL INDICATOR
- DRAG. EQPT. DET.
- HOT BOX DET.
- HIGH, WIDE SHIFTED LOAD DET.
- HIGH WATER DET.
- IMPACT DETECTOR
- INT. SIG. B NO.
- TEMP. WIND GAGE
- POWER. SW. SPRING. SW.
- DEPOT SYMBOL
- HISTORICAL MARKER

TOPOGRAPHY
ELEV. TOP OF RAIL AT STATION M.P.
CONTROL POINTS & STATION NAMES
CIRCULAR 7 NUMBER
MILE POST LOCATION
LGTH (CLEAR) OF SIDING

MAX. GRADE PERCENT (SUB GRADE)

SLIDE WARNING
EL. ABOVE SEA LEVEL
FIBER OPTICS
C. T. C. ---
A. B. S. ---
SPEED ALLOWANCE

AUTH. SUPER ELEV.
TOTAL ANGLE

ALIGNMENT & FLANGE LUBRICATORS

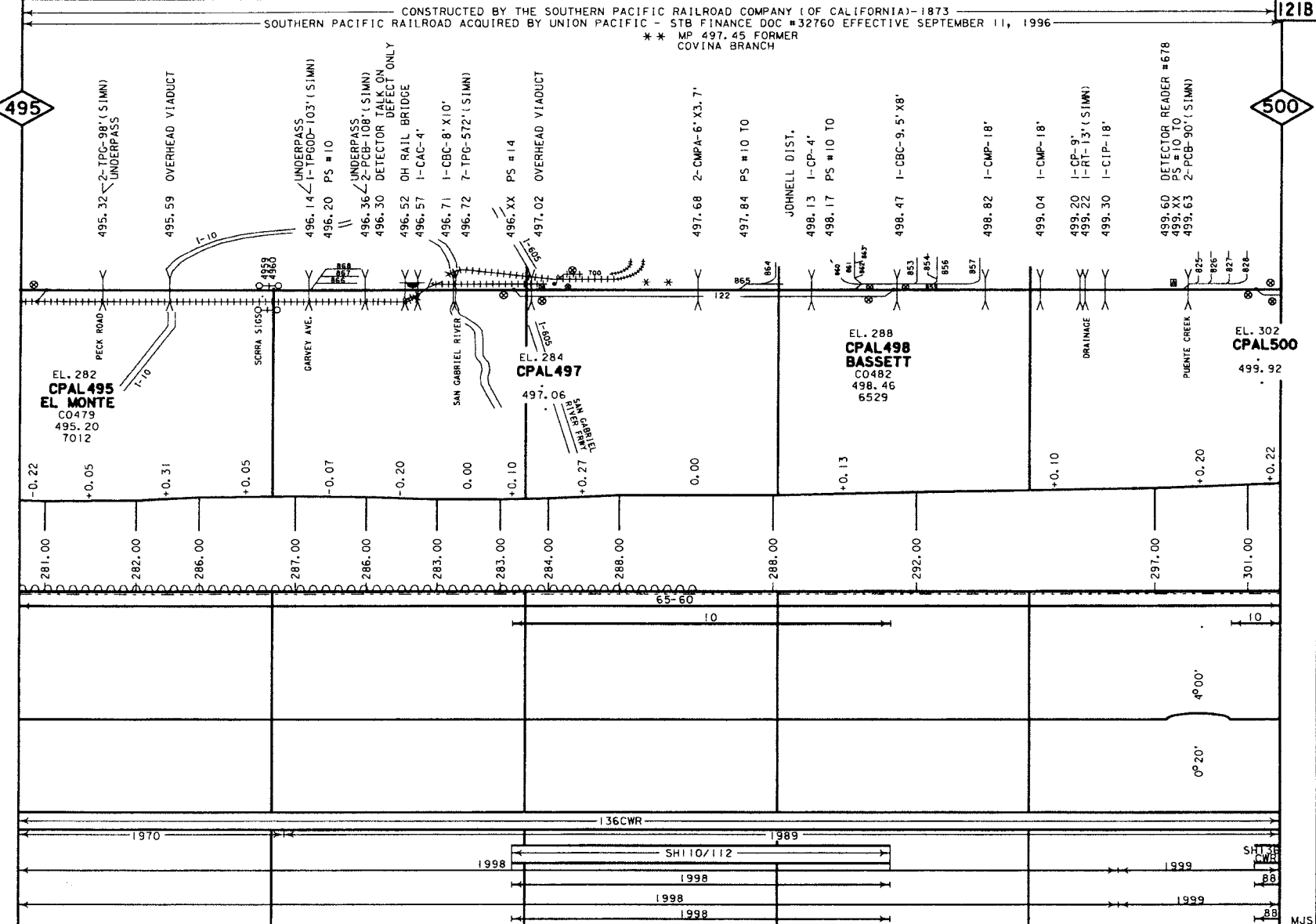
DEGREE OF CURVE

RAIL SIDING

RAIL MAIN

SURFACING & LINING
SIDING MAIN
TIE GANG
SIDING MAIN

- GRADE XING DATA
- X-BUCK
- BELL
- FLASHER
- GATES
- W/C WAG
- TRAFFIC SIGNAL
- STOP SIGN
- CANTILEVER



CYPRESS AVE-BFG
RAMONA BLVD-BFG
COGSWELL RD-BFG
LACFOOD-X
TEMPLE BLVD-BFG
VINELAND AVE-BFG
PUENTE AVE-BFG
GRANGE AVE-BFG
SUNSET AVE-BFG
CALIFORNIA AVE-BFG

FILE PAGE
LAST REVISED
JUNE 4, 2002
BRIDGES UPDATED
NOVEMBER 5, 2001
RD XING UPDATED
JANUARY 2, 2000

- YARD LIMIT
- ABSOLUTE SIG.
- AEI DETECTOR
- CRACKED WHEEL INDICATOR
- DRAG. EOPT. DET. HOT BOX DET.
- HIGH, WIDE SHIFTED LOAD DET.
- HIGH WATER DET.
- IMPACT DETECTOR
- INT. SIG. & NO.
- TEMP-WIND GAGE
- POWER SW. SPRING SW.
- DEPOT SYMBOL
- HISTORICAL MARKER

TOPOGRAPHY
ELEV. TOP OF RAIL AT STATION M.P.
CONTROL POINTS & STATION NAMES
CIRCULAR T NUMBER
MILE POST LOCATION
LGTH (CLEAR) OF SIDING

MAX. GRADE PERCENT (SUB GRADE)

SLIDE WARNING
EL. ABOVE SEA LEVEL
FIBER OPTICS
C. T. C.
A. B. S.
SPEED ALLOWANCE

AUTH. SUPER ELEV.

TOTAL ANGLE

ALIGNMENT & FLANGE LUBRICATORS

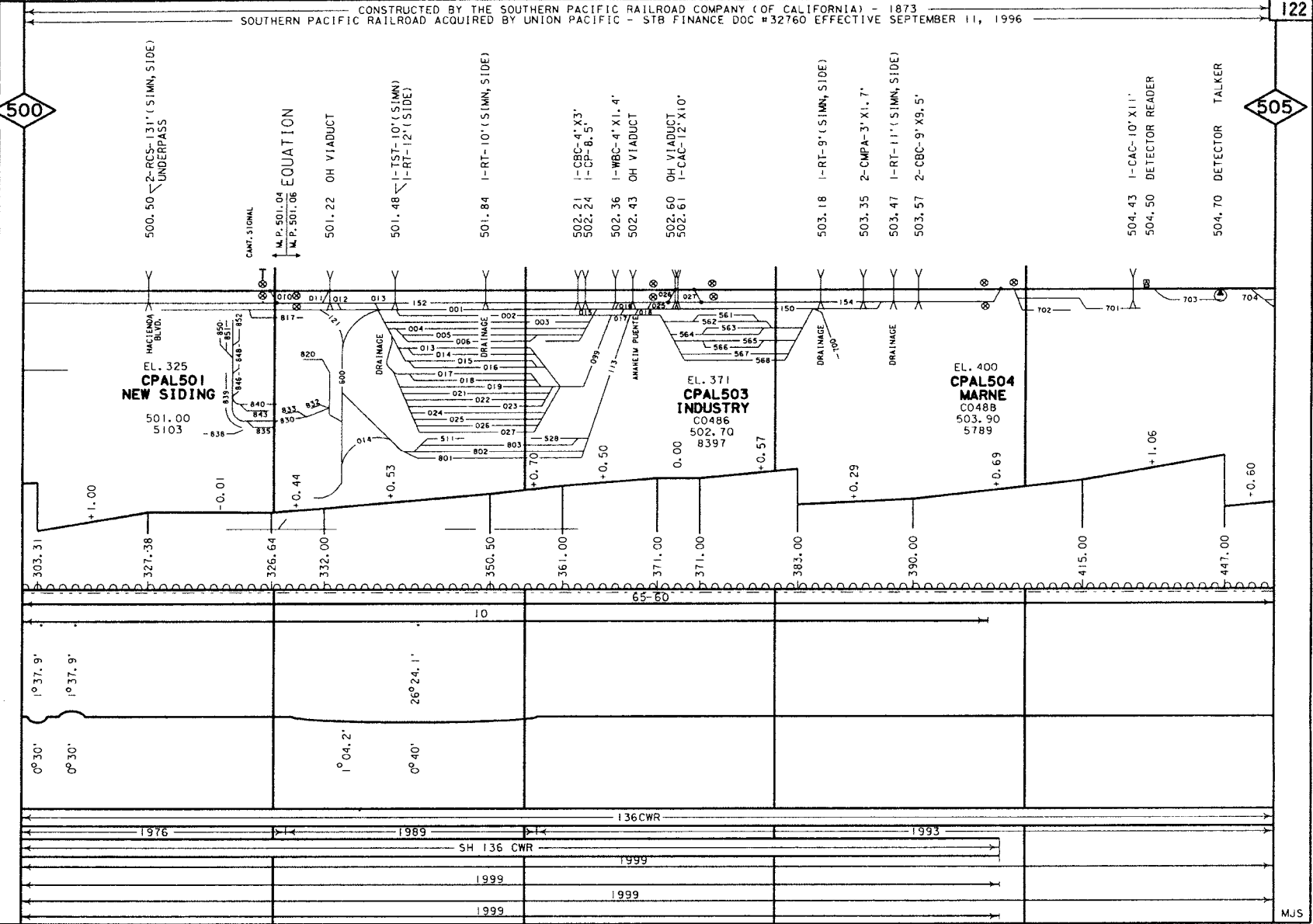
DEGREE OF CURVE

RAIL SIDING

RAIL MAIN

SURFACING & LINING
SIDING
MAIN
TIE GANG
SIDING
MAIN

GRADE XING DATA
X-BUCK
BELL
FLASHER
GATES
WIG WAG
TRAFFIC SIGNAL
STOP SIGN
CANTILEVER



500

505

MJS

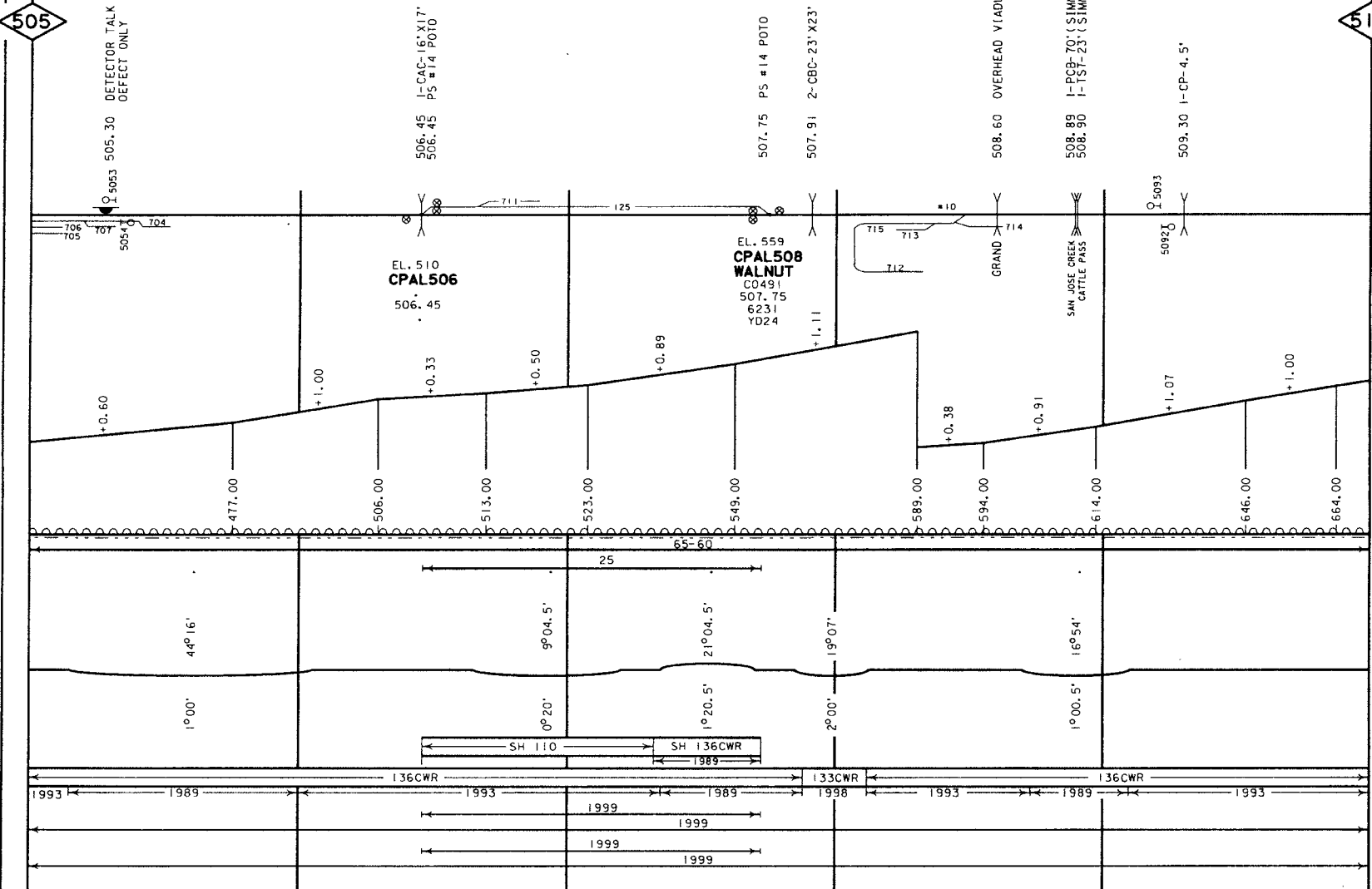
FULLERTON RD-BFG

MOGALLS AVE -BFG

FILE PAGE
LAST REVISED
JUNE 4, 2002
BRIDGES UPDATED
JUNE 13, 2002
ROAD XING UPDATED
NOVEMBER 29, 2000

CONSTRUCTED BY THE SOUTHERN PACIFIC RAILROAD COMPANY (OF CALIFORNIA) - 1873
SOUTHERN PACIFIC RAILROAD ACQUIRED BY UNION PACIFIC - STB FINANCE DOC #32760 EFFECTIVE SEPTEMBER 11, 1996

- YARD LIMIT
- ABSOLUTE SIG.
- AE1 DETECTOR
- CRACKED WHEEL INDICATOR
- DRAG EQPT. DET.
- HOT BOX DET.
- HIGH, WIDE SHIFTED LOAD DET.
- HIGH WATER DET.
- IMPACT DETECTOR
- INT. SIG. B NO.
- TEMP-WIND GAGE
- POWER SW. SPRING SW.
- DEPOT SYMBOL
- HISTORICAL MARKER
- TOPOGRAPHY
 - ELEV. TOP OF RAIL AT STATION M.P.
 - CONTROL POINTS & STATION NAMES
 - CIRCULAR 7 NUMBER
 - MILE POST LOCATION
 - LGTH (CLEAR) OF SIDING
- MAX. GRADE PERCENT (SUB GRADE)
- SLIDE WARNING
EL. ABOVE SEA LEVEL
- FIBER OPTICS
C. T. C. ---
A. B. S. ---
- SPEED ALLOWANCE
- AUTH. SUPER ELEV.
- TOTAL ANGLE
- ALIGNMENT & FLANGE LUBRICATORS
- DEGREE OF CURVE
- RAIL SIDING
- RAIL MAIN
- SURFACING & LINING
SIDING
MAIN
TIE GANG
SIDING
MAIN



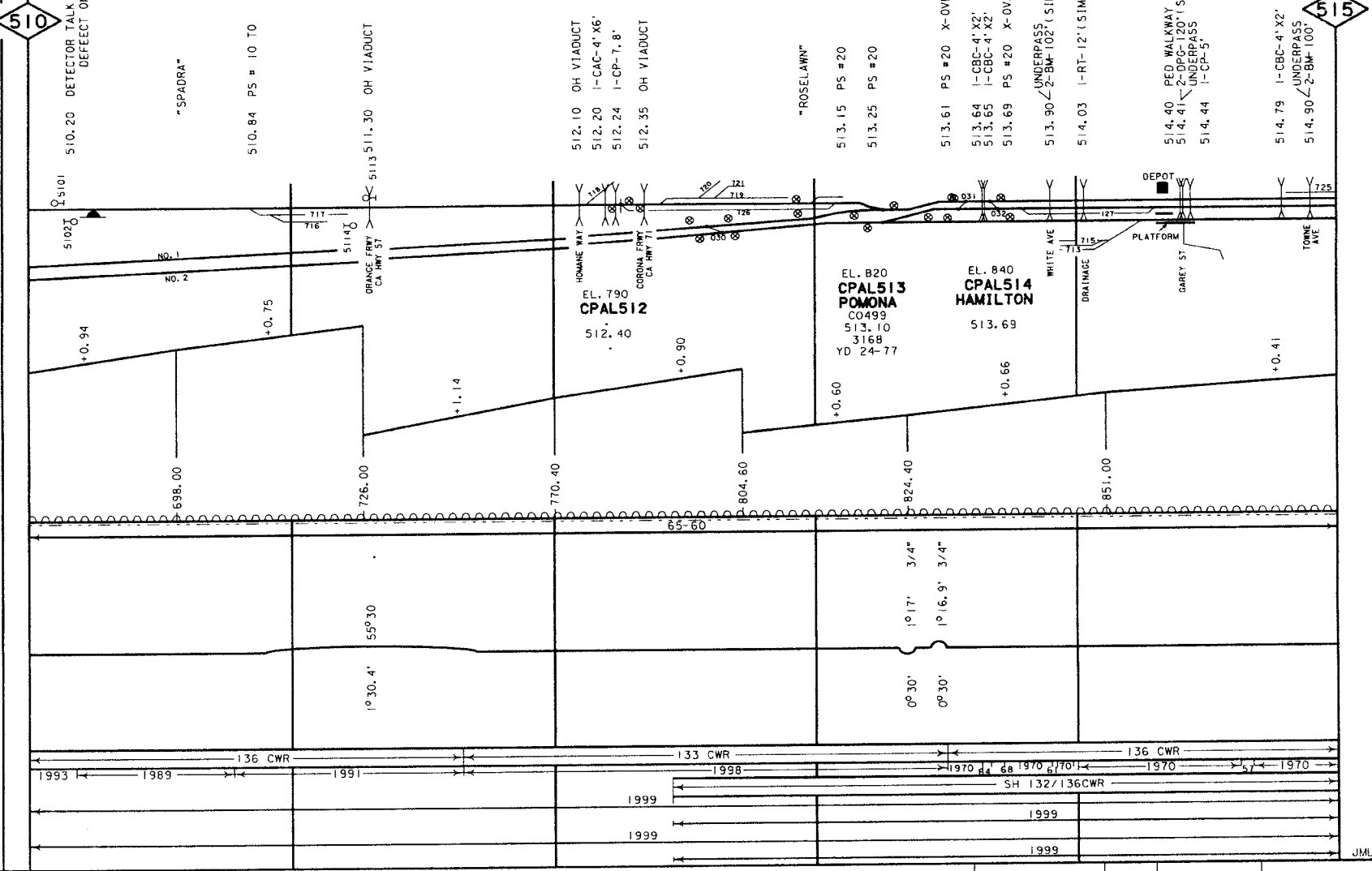
GRADE XING DATA
X-BUCK
BE
FLASHER
GATES
WIG WAG
TRAFFIC SIGNAL
STOP SIGN
CANTILEVER

JML

FILE PAGE LAST REVISED
JUNE 4, 2002
BRIDGES UPDATED
JUNE 13, 2002
RD XING UPDATED
OCTOBER 10, 2000

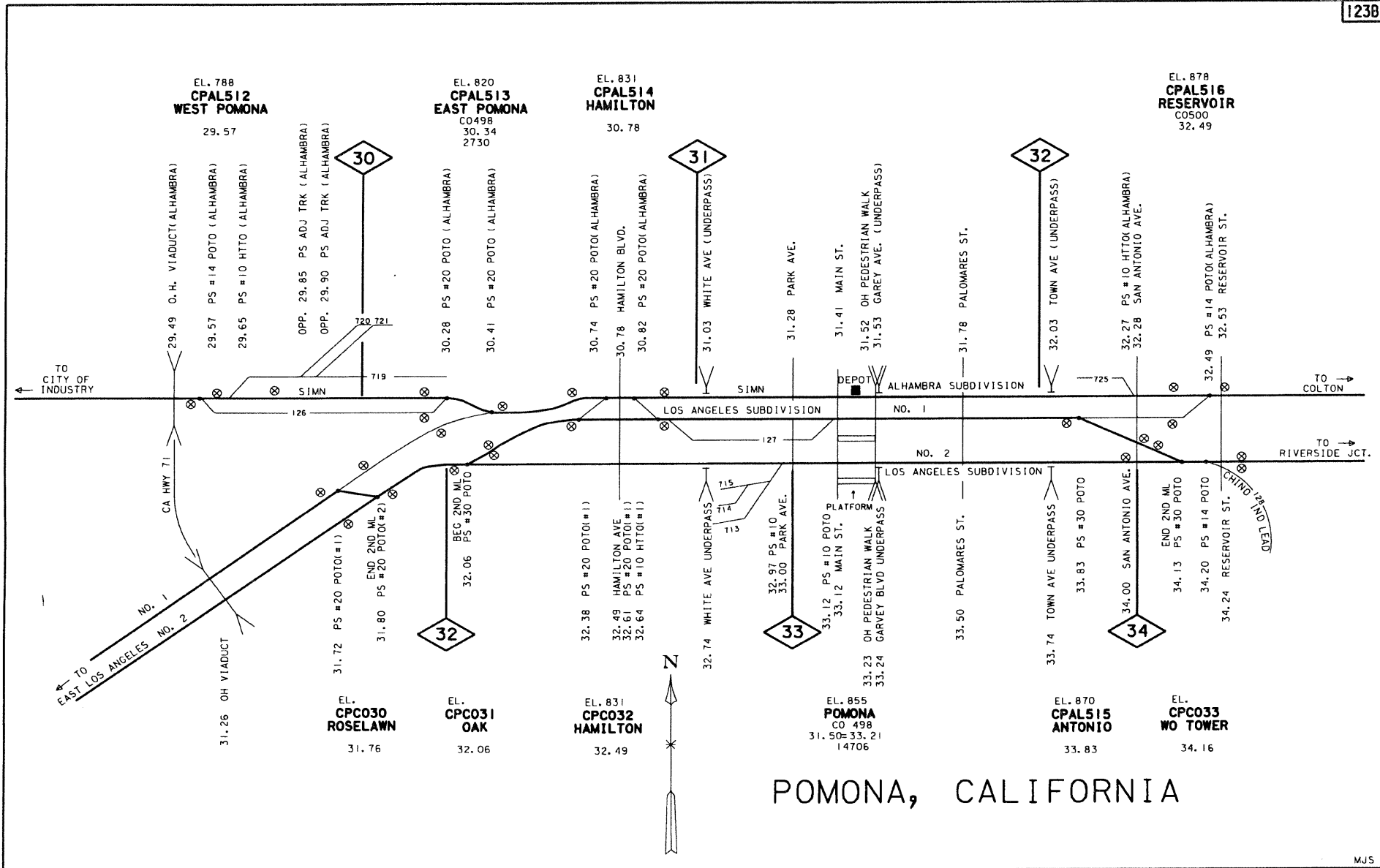
CONSTRUCTED BY THE SOUTHERN PACIFIC RAILROAD COMPANY (OF CALIFORNIA) - 1873
CONSTRUCTED BY THE SOUTHERN PACIFIC RAILROAD COMPANY (OF CALIFORNIA) - 1875
SOUTHERN PACIFIC RAILROAD ACQUIRED BY UNION PACIFIC - STB FINANCE DOC #32760 EFFECTIVE SEPTEMBER 11, 1996

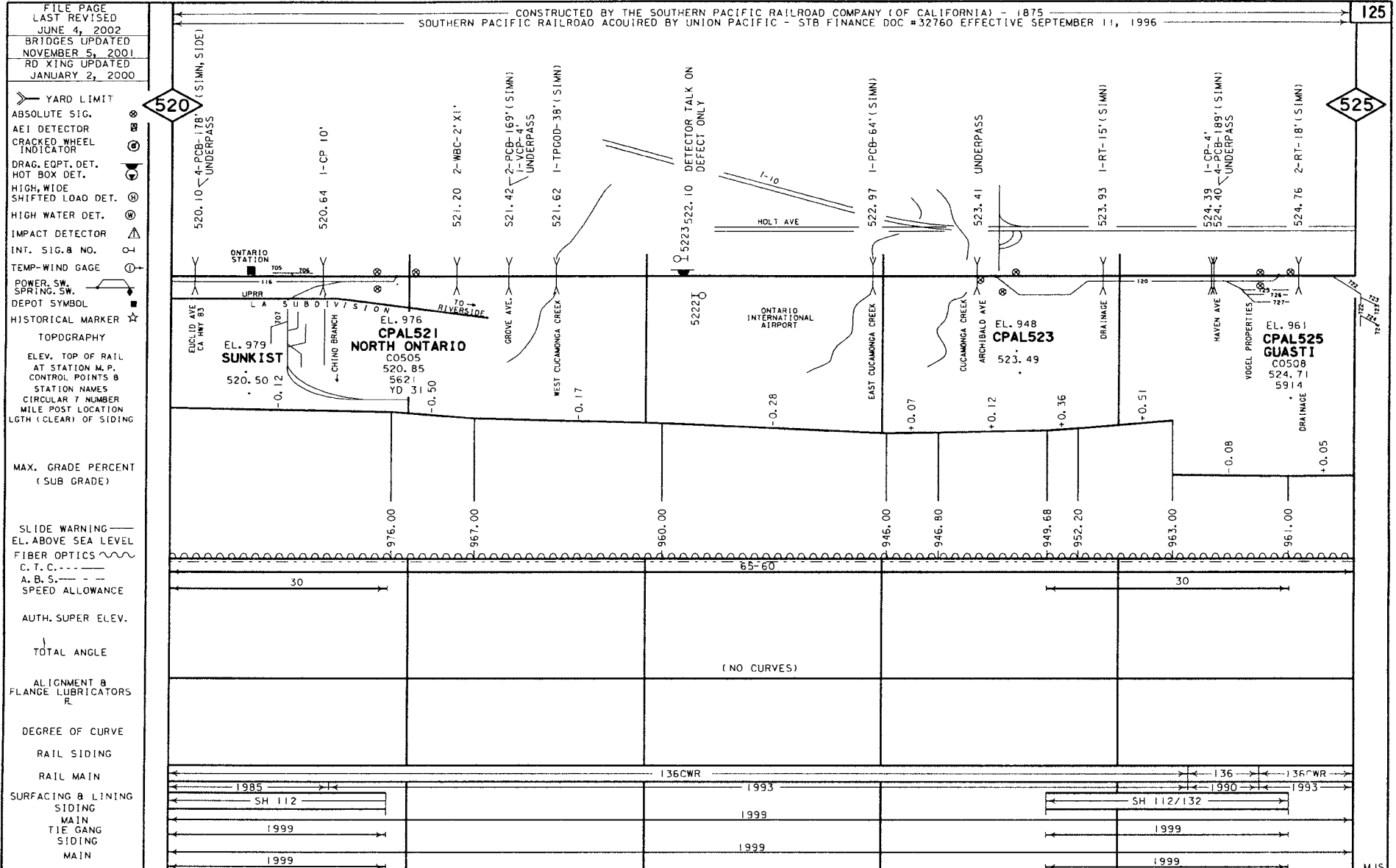
- YARD LIMIT
- ABSOLUTE SIG.
- AEI DETECTOR
- CRACKED WHEEL INDICATOR
- DRAG. EOPT. DET.
- HOT BOX DET.
- HIGH, WIDE SHIFTED LOAD DET.
- HIGH WATER DET.
- IMPACT DETECTOR
- INT. SIG. 8 NO.
- TEMP. WIND GAGE
- POWER, SW. SPRING, SW.
- DEPOT SYMBOL
- HISTORICAL MARKER
- TOPOGRAPHY
- ELEV. TOP OF RAIL AT STATION M.P.
- CONTROL POINTS B
- STATION NAMES
- CIRCULAR 7 NUMBER
- MILE POST LOCATION
- LGTH (CLEAR) OF SIDING
- MAX. GRADE PERCENT (SUB GRADE)
- SLIDE WARNING
- EL. ABOVE SEA LEVEL
- FIBER OPTICS
- C. T. C.
- A. B. S.
- SPEED ALLOWANCE
- AUTH. SUPER ELEV.
- TOTAL ANGLE
- ALIGNMENT & FLANGE LUBRICATORS
- DEGREE OF CURVE
- RAIL SIDING
- RAIL MAIN
- SURFACING & LINING
- SIDING MAIN
- TIE GANG
- SIDING MAIN



GRADE XING DATA
X-BUCK
BELL
FLASHER
GATES
WIC WAG
TRAFFIC SIGNAL
STOP SIGN
CANTILEVER







GRADE XING DATA

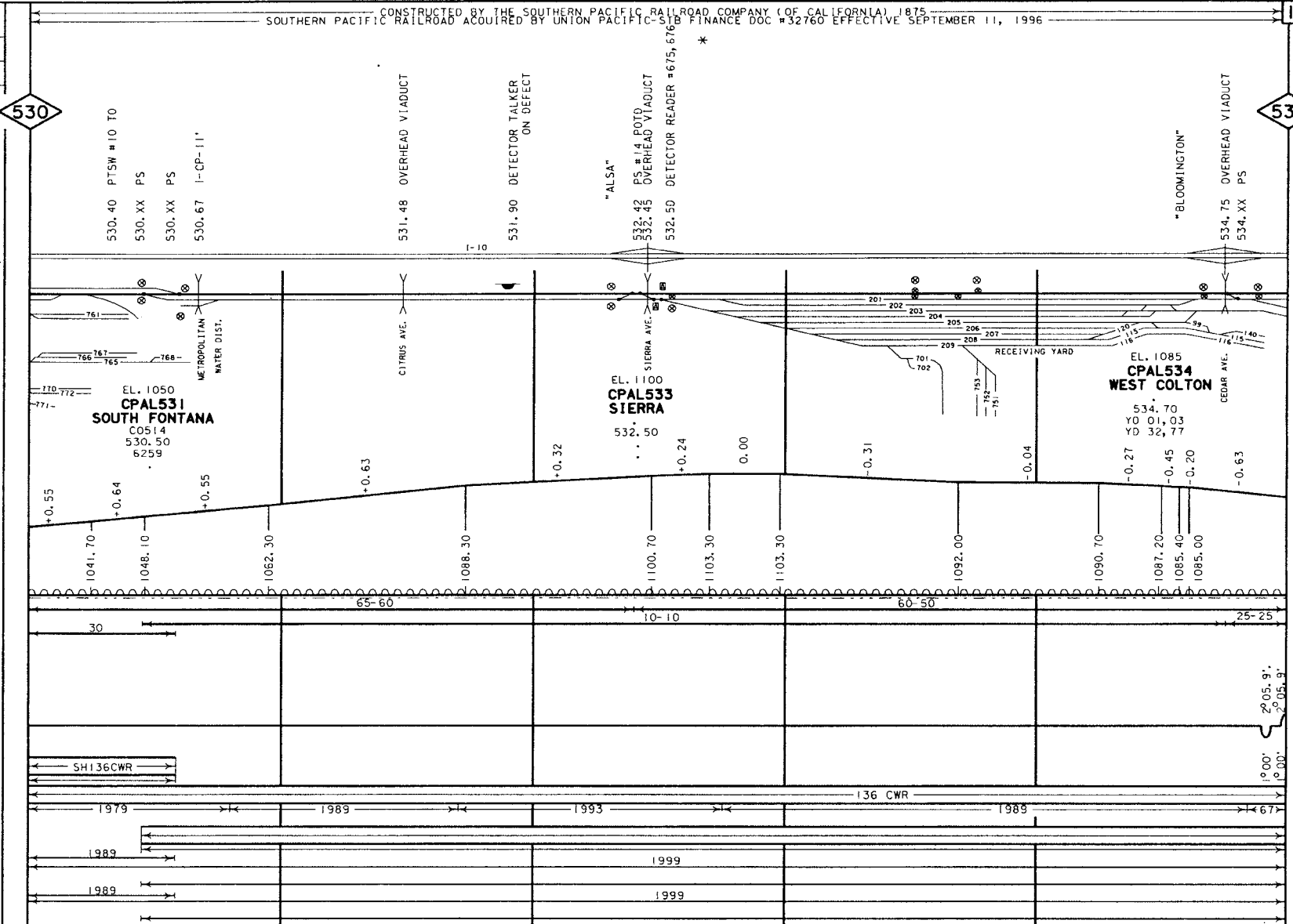
X	BUCK
B	BELL
L	FLASHER
G	GATES
W	W/MAG
T	TRAFFIC SIGNAL
S	STOP SIGN
C	CANTILEVER

SULTANA AVE-BFG	CAMPUS AVE-CBFG	BON VIEW AVE-BFG	VINEYARD AVE-CBFG
-----------------	-----------------	------------------	-------------------

FILE PAGE
LAST REVISED
SEPTEMBER 16, 2002
BRIDGES UPDATED
NOVEMBER 5, 2001
RD XING UPDATED
OCTOBER 4, 2001

SOUTHERN PACIFIC CONSTRUCTED BY THE SOUTHERN PACIFIC RAILROAD COMPANY (OF CALIFORNIA) 1875
ACQUIRED BY UNION PACIFIC STB FINANCE DOC #32760 EFFECTIVE SEPTEMBER 11, 1996

- YARD LIMIT
- ABSOLUTE SIG.
- AEI DETECTOR
- CRACKED WHEEL INDICATOR
- DRAG. FORT. DET.
- HOT BOX DET.
- HIGH, WIDE SHIFTED LOAD DET.
- HIGH WATER DET.
- IMPACT DETECTOR
- INT. SIG. & NO.
- TEMP-WIND GAGE
- POWER SW.
- SPRING SW.
- DEPOT SYMBOL
- HISTORICAL MARKER
- TOPOGRAPHY
- ELEV. TOP OF RAIL AT STATION M.P.
- CONTROL POINTS & STATION NAMES
- CIRCULAR 7 NUMBER
- MILE POST LOCATION
- LGTH (CLEAR) OF SIDING
- MAX. GRADE PERCENT (SUB GRADE)
- SLIDE WARNING
- E.L. ABOVE SEA LEVEL
- FIBER OPTICS
- C. T. C.
- A. B. S.
- NO. 1 TRACK SPEED ALLOWANCE
- NO. 2 TRACK
- AUTH. SUPER ELEV.
- TOTAL ANGLE
- ALIGNMENT & FLANGE LUBRICATORS
- DEGREE OF CURVE
- SIDING
- RAIL NO. 1 TRACK
- NO. 2 TRACK
- SURFACING & LINING
- SIDING NO. 1 TRACK
- NO. 2 TRACK
- TIE GANG
- SIDING NO. 1 TRACK
- NO. 2 TRACK



GRADE XING DATA
K = X-BUCK
B = BELL
F = FLASHER
G = GATES
W = WIC WAG
T = TRAFFIC SIGNAL
S = STOP SIGN
C = CANTILEVER

RR PRIVATE

BHW

FILE PAGE
LAST REVISED
SEPTEMBER 3, 2002
BRIDGES UPDATED
OCTOBER 8, 2001
RD XING UPDATED
JANUARY 9, 2001

535 (SMM)

- YARD LIMIT
- ABSOLUTE SIG.
 - AEI DETECTOR
 - CRACKED WHEEL INDICATOR
 - DRAG. EOPT. DET.
 - HOT BOX DET.
 - HIGH, WIDE
 - SHIFTED LOAD DET.
 - HIGH WATER DET.
 - IMPACT DETECTOR
 - INT. SIG. B NO.
 - TEMP-WIND GAGE
 - POWER. SW.
 - SPRING. SW.
 - DEPOT SYMBOL
 - HISTORICAL MARKER

TOPOGRAPHY

- ELEV. TOP OF RAIL
- AT STATION M.P.
- CONTROL POINTS & STATION NAMES
- CIRCULAR 7 NUMBER
- MILE POST LOCATION
- LGTH (CLEAR) OF SIDING

MAX. GRADE PERCENT (SUB GRADE)

SLIDE WARNING

- EL. ABOVE SEA LEVEL
- FIBER OPTICS
- C. T. C.
- A. B. S.

SPEED ALLOWANCE

AUTH. SUPER ELEV.

TOTAL ANGLE

ALIGNMENT & FLANGE LUBRICATORS

DEGREE OF CURVE

SIDING

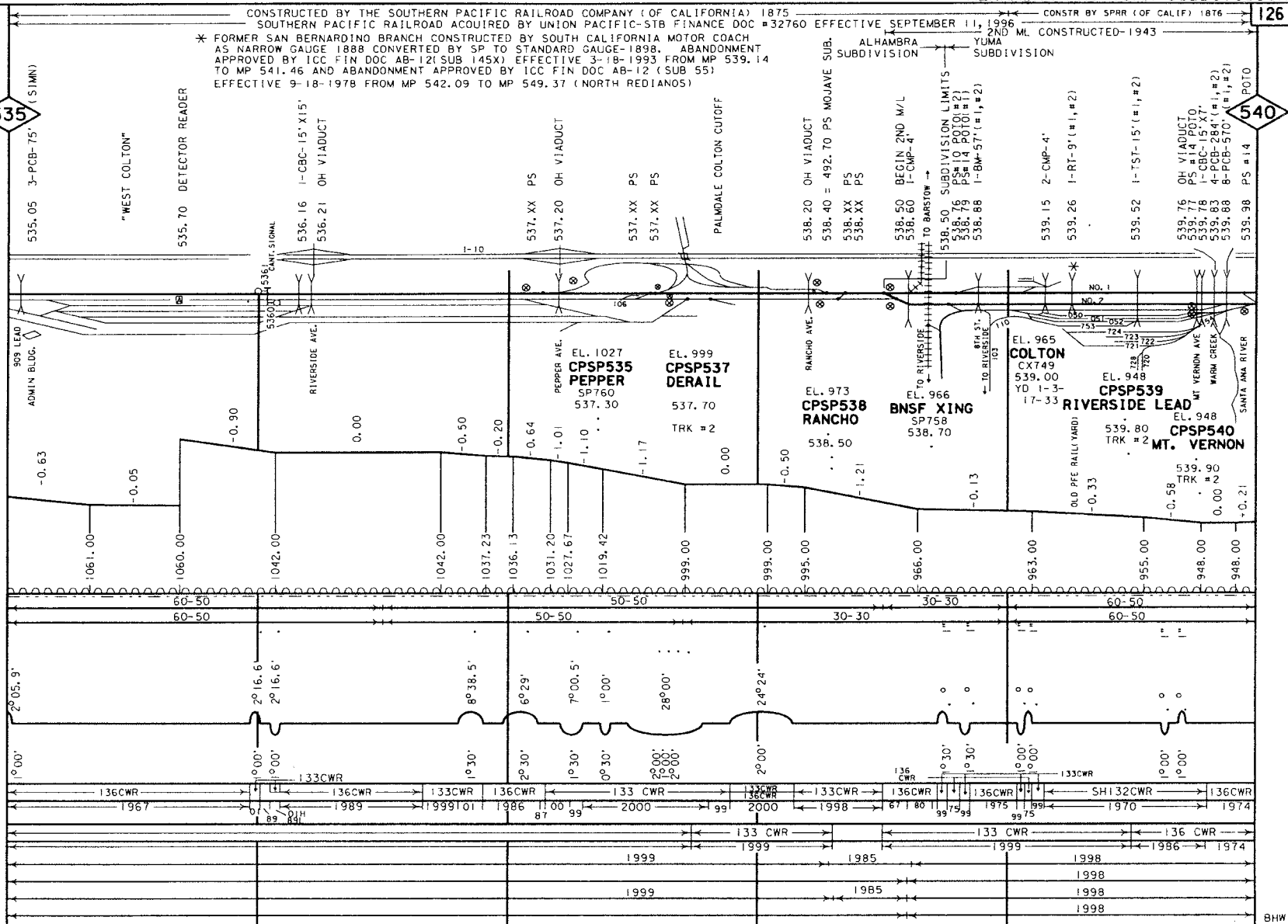
RAIL

SURFACING & LINING

TIE GANG

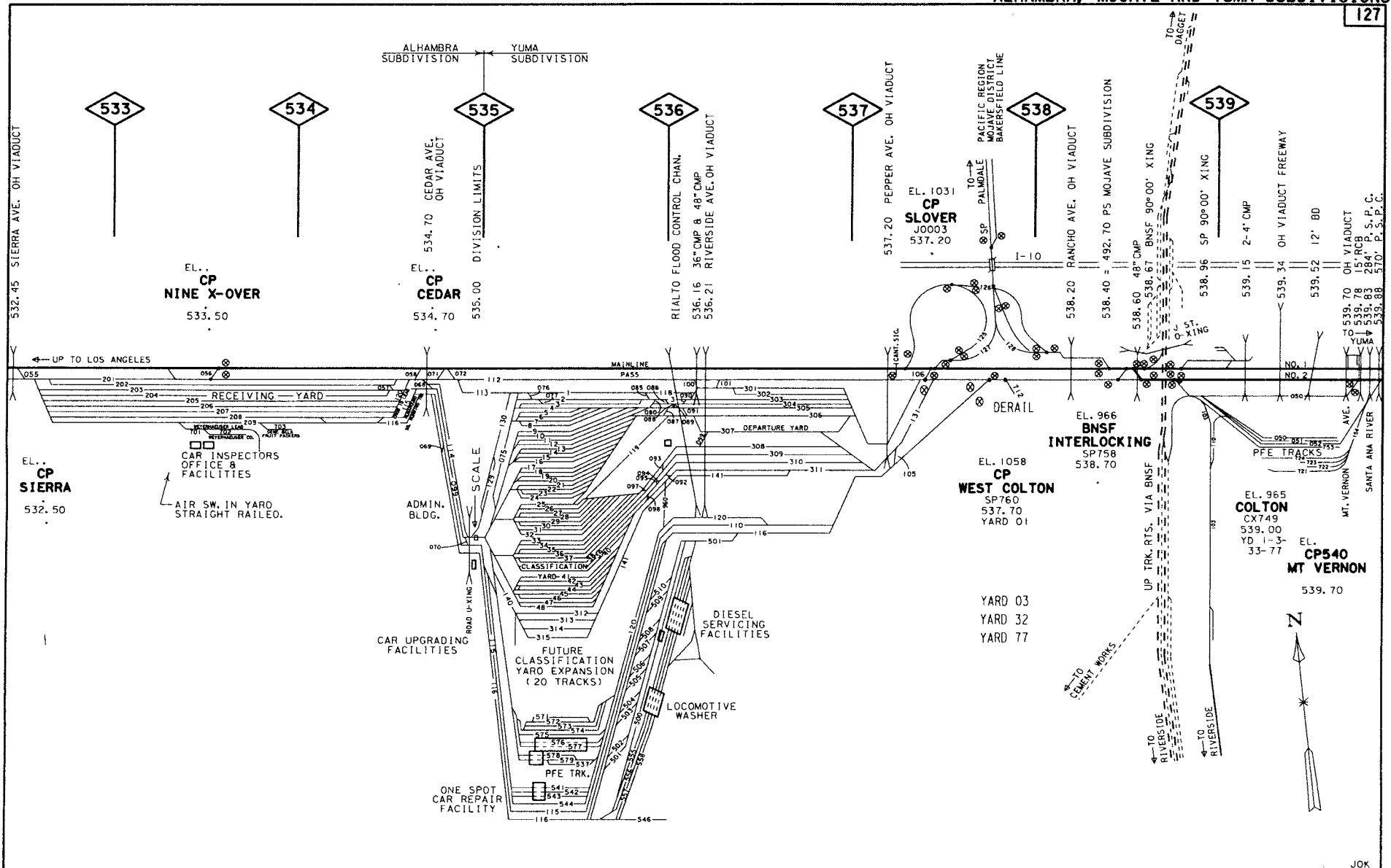
GRADE XING DATA

- X = BUCK
- B = BELL
- F = FLASHER
- G = GATES
- W = WIG WAG
- T = TRAFFIC SIGNAL
- S = STOP SIGN
- C = CANTILEVER



540 (POTO)

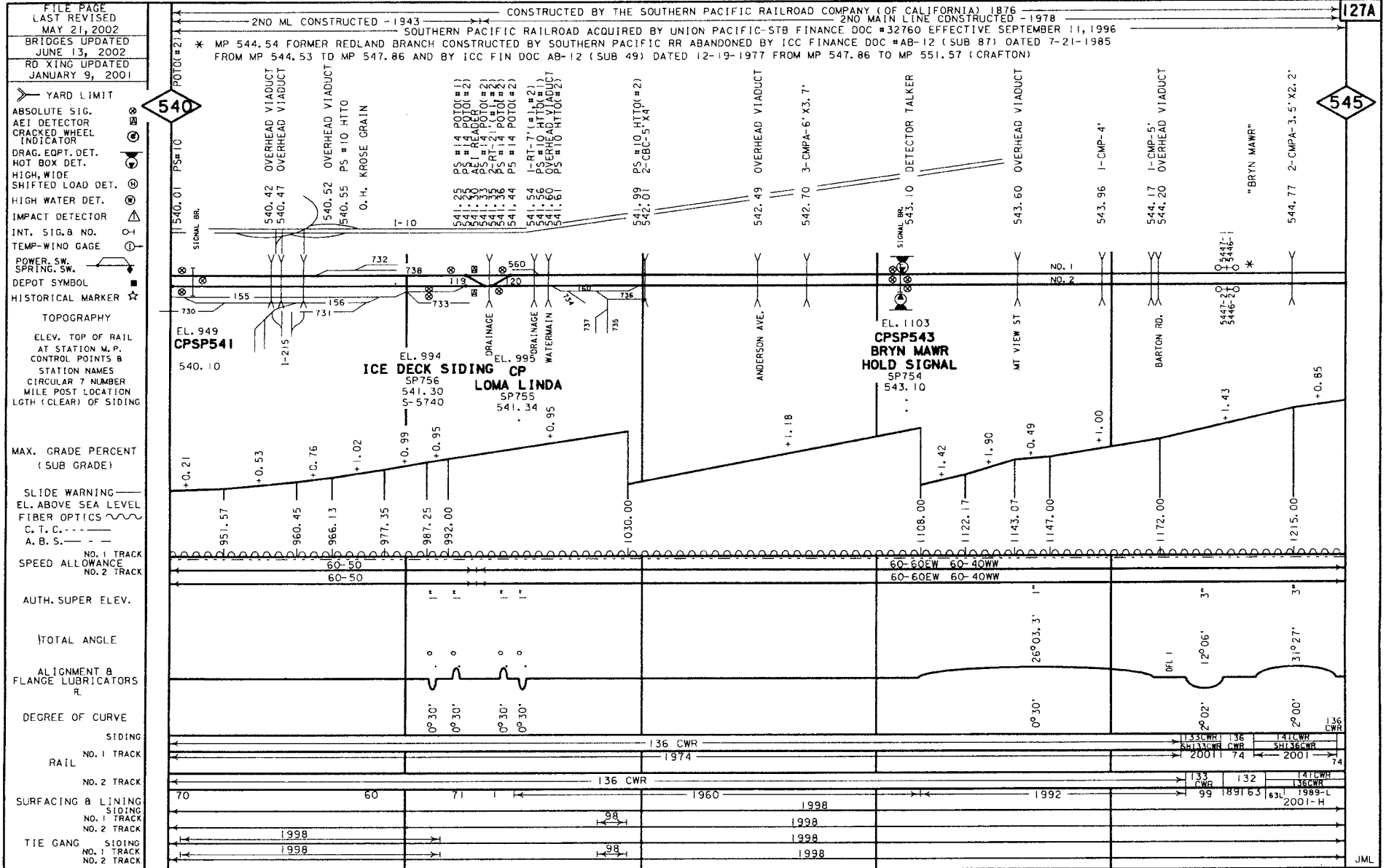
BHW



WEST COLTON YD.
535.0

MAP CORRECTED FOR MAY 21, 2002

JOK



JML

FILE PAGE
LAST REVISED
MAY 21, 2002
BRIDGES UPDATED
OCTOBER 8, 2001
ROAD XING UPDATED
DECEMBER 27, 2000

CONSTRUCTED BY THE SOUTHERN PACIFIC RAILROAD COMPANY (OF CALIFORNIA) 1876
2ND MAIN LINE CONSTRUCTED-1963
SOUTHERN PACIFIC RAILROAD ACQUIRED BY UNION PACIFIC-STB FINANCE DOC #32760 EFFECTIVE SEPTEMBER 11, 1996
2ND MAIN LINE CONST-1957

← LINE CHANGE-1928 →

- YARD LIMIT
- ABSOLUTE SIG.
- AEI DETECTOR
- CRACKED WHEEL INDICATOR
- ORAG. EQPT. DET.
- HOT BOX DET.
- HIGH, WIDE SHIFTED LOAD DET.
- HIGH WATER DET.
- IMPACT DETECTOR
- INT. SIG. B NO.
- TEMP-WIND GAGE
- POWER SW. SPRING SW.
- DEPOT SYMBOL
- HISTORICAL MARKER

550

555

- TOPOGRAPHY
- ELEV. TOP OF RAIL AT STATION M.P.
- CONTROL POINTS
- STATION NAMES
- CIRCULAR 7 NUMBER
- MILE POST LOCATION
- LGTH (CLEAR) OF SIDING

MAX. GRADE PERCENT (SUB GRADE)

- SLIDE WARNING
- ELEV. ABOVE SEA LEVEL
- FIBER OPTICS
- C. T. C.
- A. B. S.

SPEED ALLOWANCE
NO. 1 TRACK
NO. 2 TRACK

AUTH. SUPER ELEV.

TOTAL ANGLE

ALIGNMENT & FLANGE LUBRICATORS

DEGREE OF CURVE

RAIL

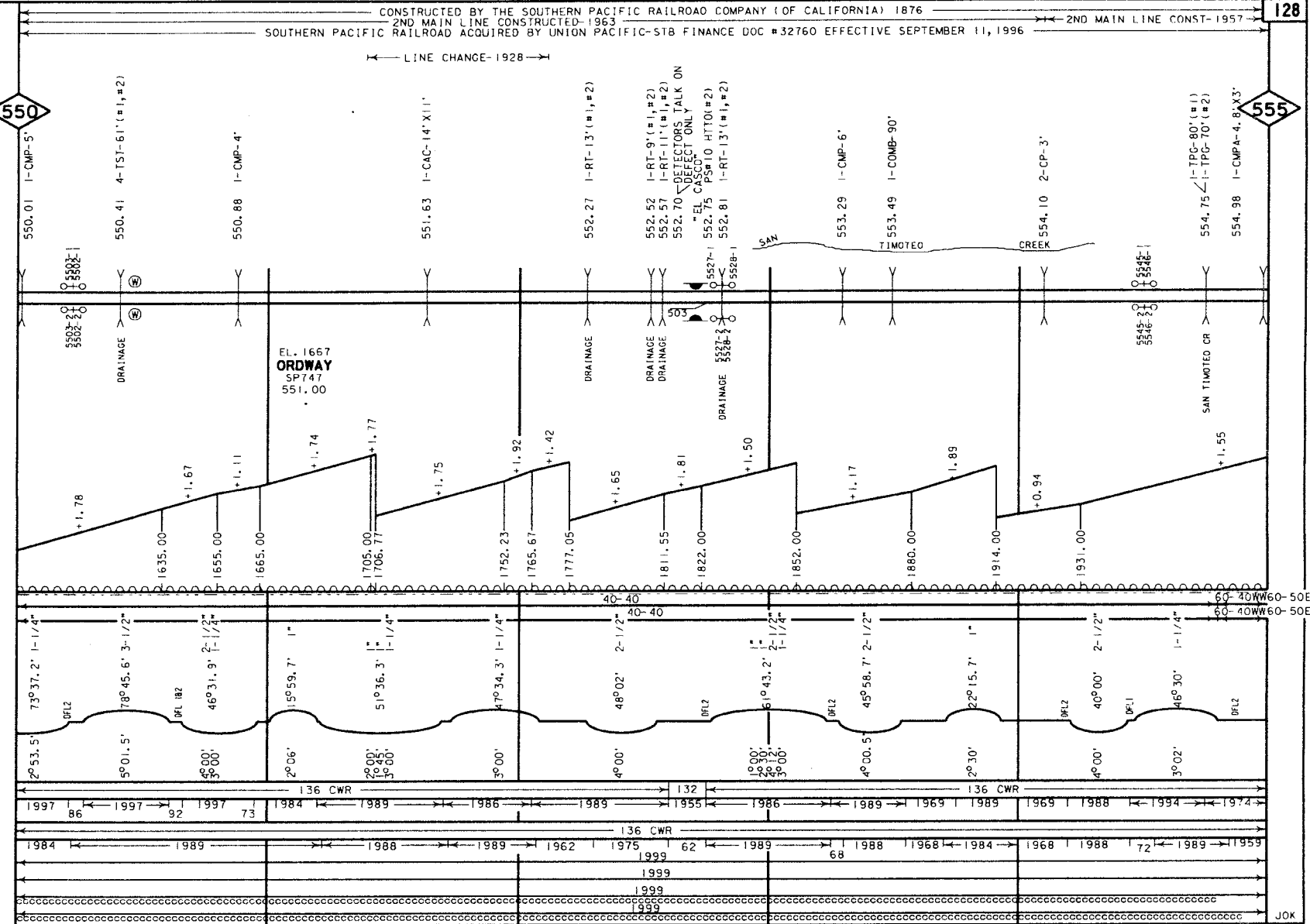
SURFACING & LINING

TIE GANG

NO. 1 TRACK

NO. 2 TRACK

- GRADE XING DATA
- X-BUCK
- BELL
- FLASHER
- GATES
- WIG WAG
- TRAFFIC SIGNAL
- STOP SIGN
- CANTILEVER



FILE PAGE
LAST REVISED
MARCH 20, 2002
BRIDGES UPDATED
OCTOBER 8, 2001
RD XING UPDATED
JANUARY 9, 2001

CONSTRUCTED BY THE SOUTHERN PACIFIC RAILROAD COMPANY (OF CALIFORNIA) 1876
2ND MAIN LINE CONSTRUCTED-1957
SOUTHERN PACIFIC RAILROAD ACQUIRED BY UNION PACIFIC-STB FINANCE DOC #32760 EFFECTIVE SEPTEMBER 11, 1996
2ND M. CONSTRUCTED-1956

- YARD LIMIT
- ABSOLUTE SIG.
- AEI DETECTOR
- CRACKED WHEEL INDICATOR
- DRAG, EOPT. DET.
- HOT BOX DET.
- HIGH, WIDE SHIFTED LOAD DET.
- HIGH WATER DET.
- IMPACT DETECTOR
- INT. SIG. & NO.
- TEMP-WIND GAGE
- POWER, SW.
- SPRING, SW.
- DEPOT SYMBOL
- HISTORICAL MARKER
- TOPOGRAPHY
- ELEV. TOP OF RAIL AT STATION W.P.
- CONTROL POINTS & STATION NAMES
- CIRCULAR 7 NUMBER MILE POST LOCATION LGTH (CLEAR) OF SIDING

MAX. GRADE PERCENT (SUB GRADE)

SLIDE WARNING
EL. ABOVE SEA LEVEL

FIBER OPTICS
C. T. C. ---
A. B. S. ---
SPEED ALLOWANCE

AUTH. SUPER ELEV.

TOTAL ANGLE

ALIGNMENT & FLANGE LUBRICATORS

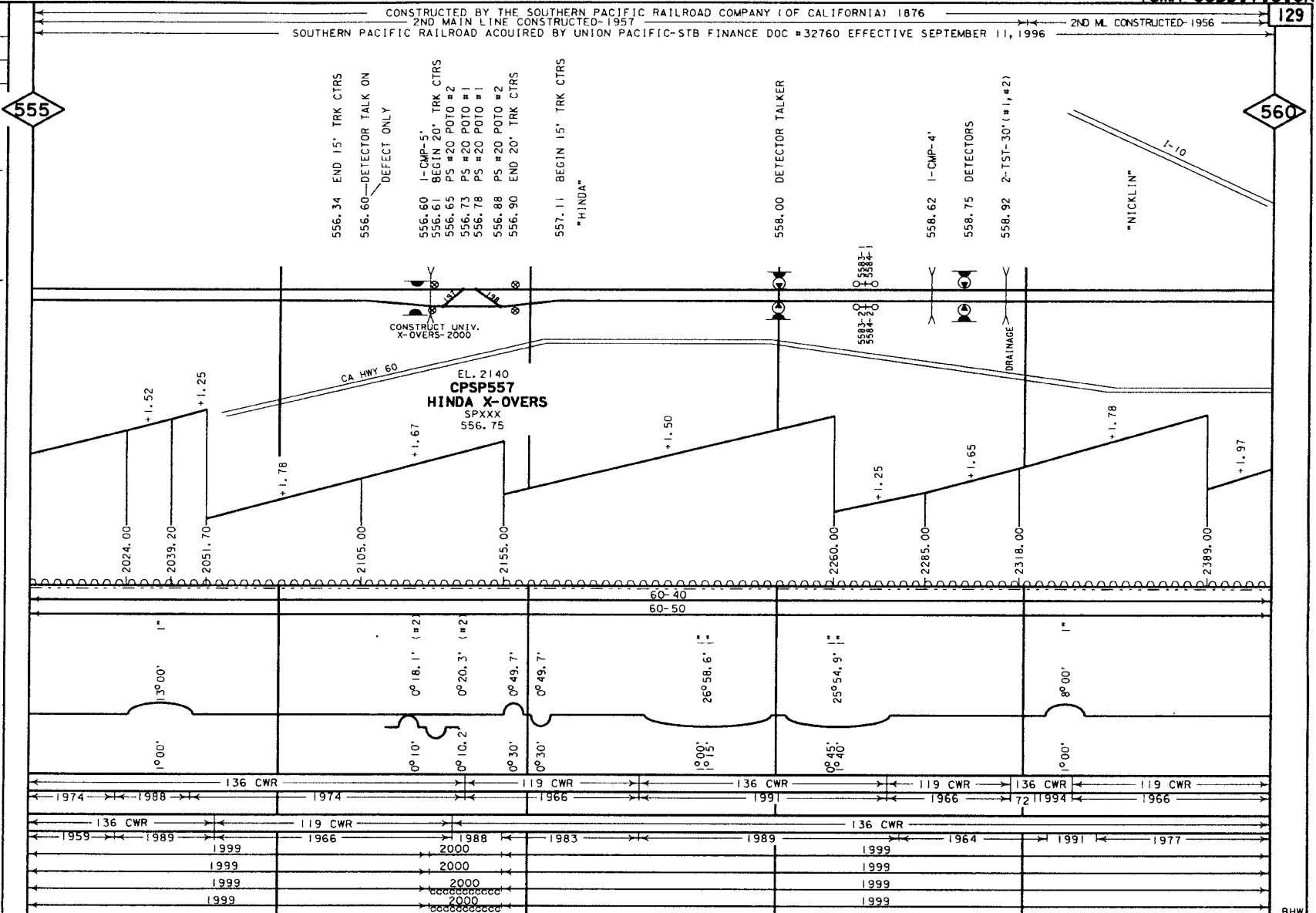
DEGREE OF CURVE

RAIL SIDING

RAIL MAIN

SURFACING & LINING
SIDING
MAIN
TIE GANG
SIDING
MAIN

GRADE XING DATA
X = X-BUCK
B = BELL
F = FLASHER
G = GATES
W = WIG WAG
T = TRAFFIC SIGNAL
S = STOP SIGN
C = CANTILEVER



555

560

556.34 END 15' TRK CTRS
556.60 DETECTOR TALK ON
DEFECT ONLY
556.60 I-CMP-5'
556.61 BEGIN 20' TRK CTRS
556.65 PS #20 PO10 #2
556.73 PS #20 PO10 #1
556.78 PS #20 PO10 #1
556.88 PS #20 PO10 #2
556.90 END 20' TRK CTRS
557.11 BEGIN 15' TRK CTRS
"HINDA"

CONSTRUCT UNIV.
X-OVERS-2000

EL. 2140
CPS557
HINDA X-OVERS
SPXXX
556.75

558.00 DETECTOR TALKER

558.62 I-CMP-4'
558.75 DETECTORS
558.92 2-TST-30' (#1, #2)

"NICKLIN"

BHW

FILE PAGE
LAST REVISED
MAY 21, 2002
BRIDGES UPDATED
JANUARY 3, 2002
RD XING UPDATED
JANUARY 9, 2001

CONSTRUCTED BY THE SOUTHERN PACIFIC RAILROAD COMPANY (OF CALIFORNIA) 1876
2ND MAIN LINE CONSTR. - 1956
SOUTHERN PACIFIC RAILROAD ACQUIRED BY UNION PACIFIC-STB FINANCE DOC #32760 EFFECTIVE SEPTEMBER 11, 1996
2ND MAIN LINE CONSTR. - 2001

- YARD LIMIT
- ABSOLUTE SIG.
- AEI DETECTOR
- CRACKED WHEEL INDICATOR
- DRAG. EOPT. DET.
- HOT BOX DET.
- HIGH WIDE SHIFTED LOAD DET.
- HIGH WATER DET.
- IMPACT DETECTOR
- INT. SIG. & NO.
- TEMP-WIND GAGE
- POWER SW.
- SPRING SW.
- DEPOT SYMBOL
- HISTORICAL MARKER
- TOPOGRAPHY
- ELEV. TOP OF RAIL AT STATION W.P.
- CONTROL POINTS & STATION NAMES
- CIRCULAR 7 NUMBER
- MILE POST LOCATION
- LGTH (CLEAR) OF SIDING

MAX. GRADE PERCENT (SUB GRADE)

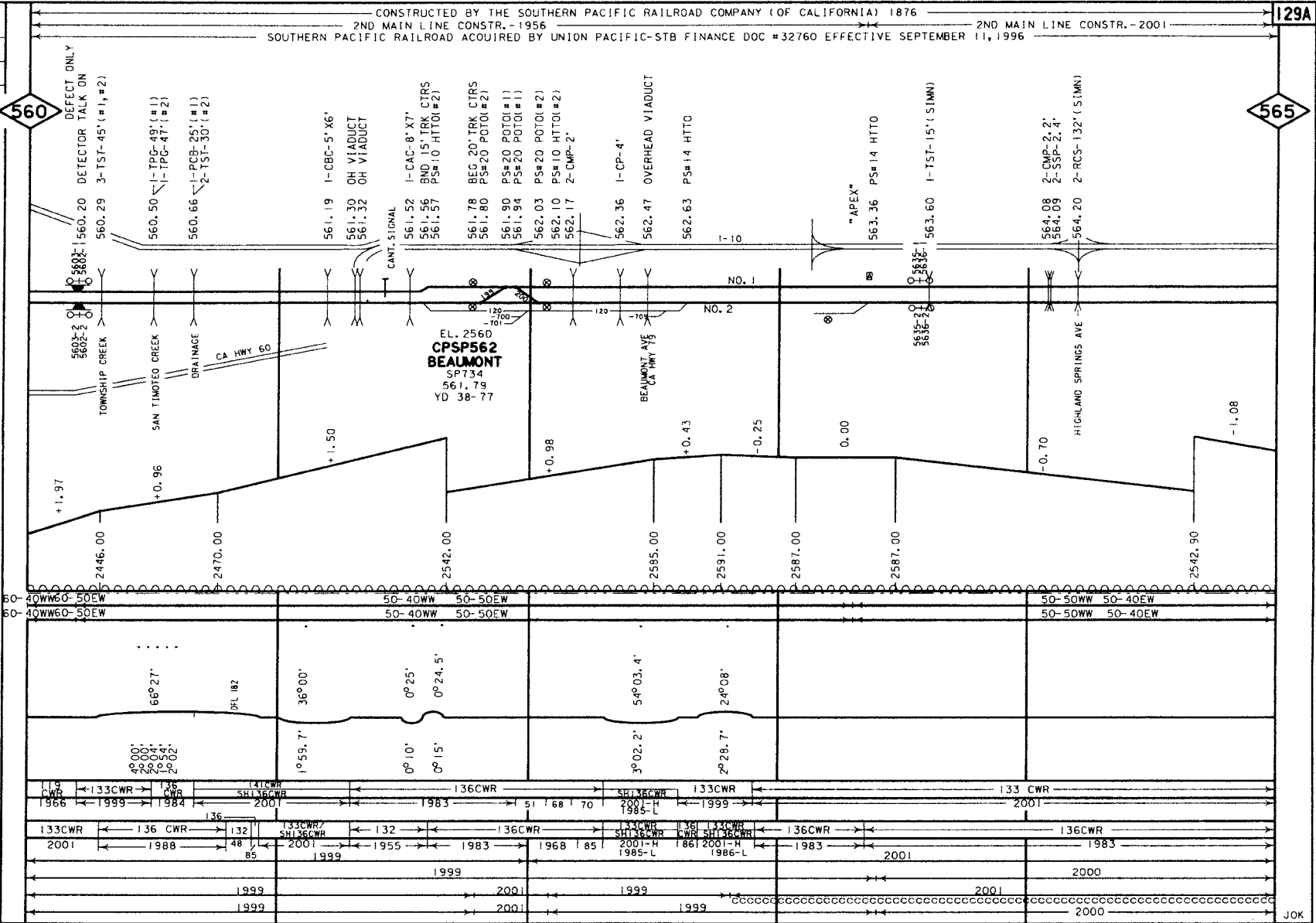
SLIDE WARNING
EL. ABOVE SEA LEVEL
FIBER OPTICS
C. T. C.
A. B. S.
SPEED ALLOWANCE

AUTH. SUPER ELEV.
TOTAL ANGLE

ALIGNMENT & FLANGE LUBRICATORS
DEGREE OF CURVE

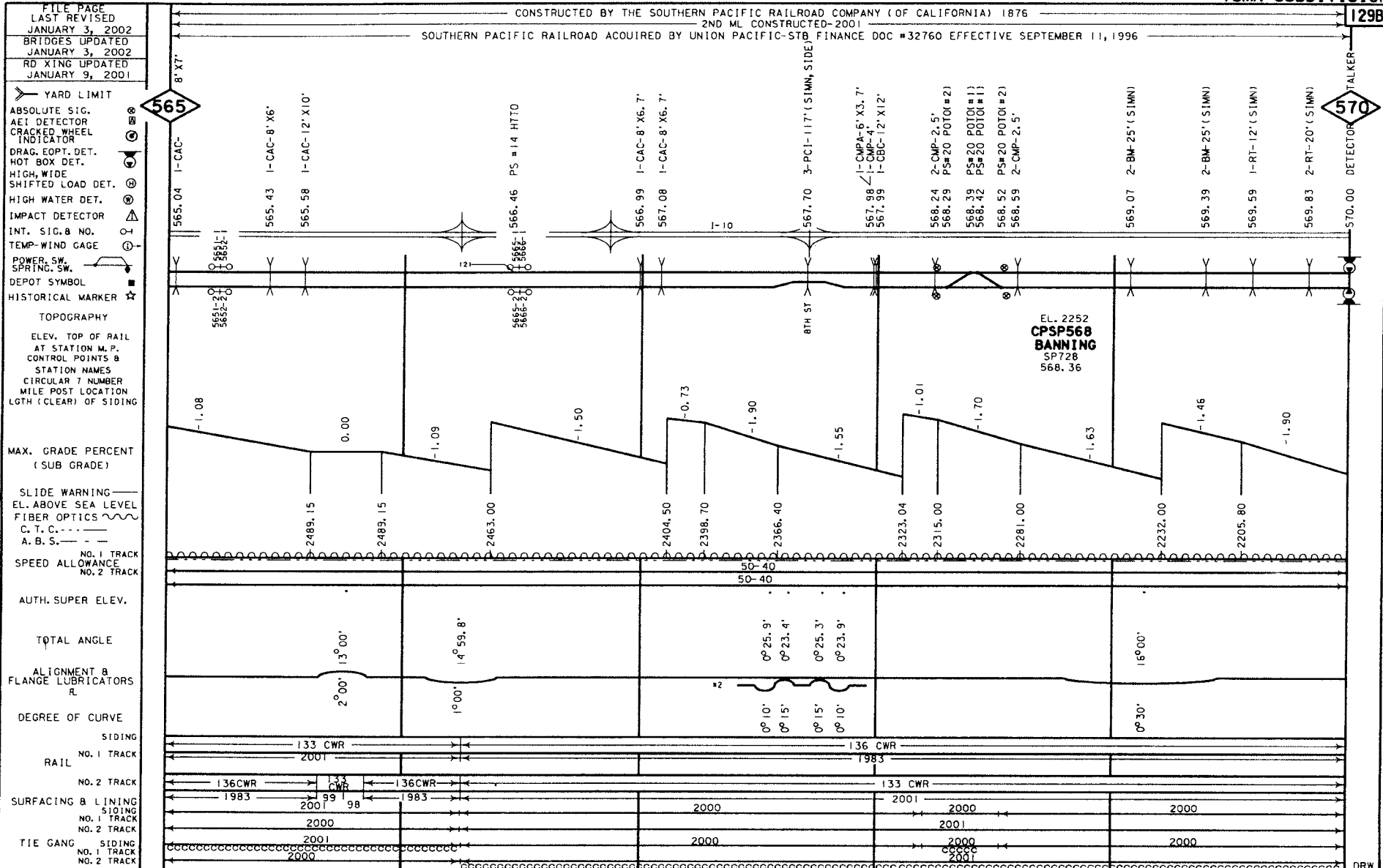
RAIL SIDING
RAIL MAIN
SURFACING & LINING
SIDING
MAIN
TIE GANG
SIDING
MAIN

GRADE XING DATA
X-BUCK
BELL
FLASHER
GATES
W/F WAC
TRAFFIC SIGNAL
STOP SIGN
CANTILEVER



565

JOK



FILE PAGE
LAST REVISED
JANUARY 3, 2002
BRIDGES UPDATED
JANUARY 3, 2002
RD XING UPDATED
JANUARY 9, 2001

YARD LIMIT

ABSOLUTE SIG.
AEI DETECTOR
CRACKED WHEEL
INDICATOR
DRAG. EOPT. DET.
HOT BOX DET.
HIGH, WIDE
SHIFTED LOAD DET.
HIGH WATER DET.
IMPACT DETECTOR
INT. SIG. & NO.
TEMP. WIND GAGE
POWER SW.
SPRING SW.
DEPOT SYMBOL
HISTORICAL MARKER

TOPOGRAPHY
ELEV. TOP OF RAIL
AT STATION M. P.
CONTROL POINTS &
STATION NAMES
CIRCULAR 7 NUMBER
MILE POST LOCATION
LGTH (CLEAR) OF SIDING

MAX. GRADE PERCENT
(SUB GRADE)

SLIDE WARNING
EL. ABOVE SEA LEVEL
FIBER OPTICS
C. T. C. ---
A. B. S. ---

NO. 1 TRACK
SPEED ALLOWANCE
NO. 2 TRACK

AUTH. SUPER ELEV.

TOTAL ANGLE

ALIGNMENT &
FLANGE LUBRICATORS
R

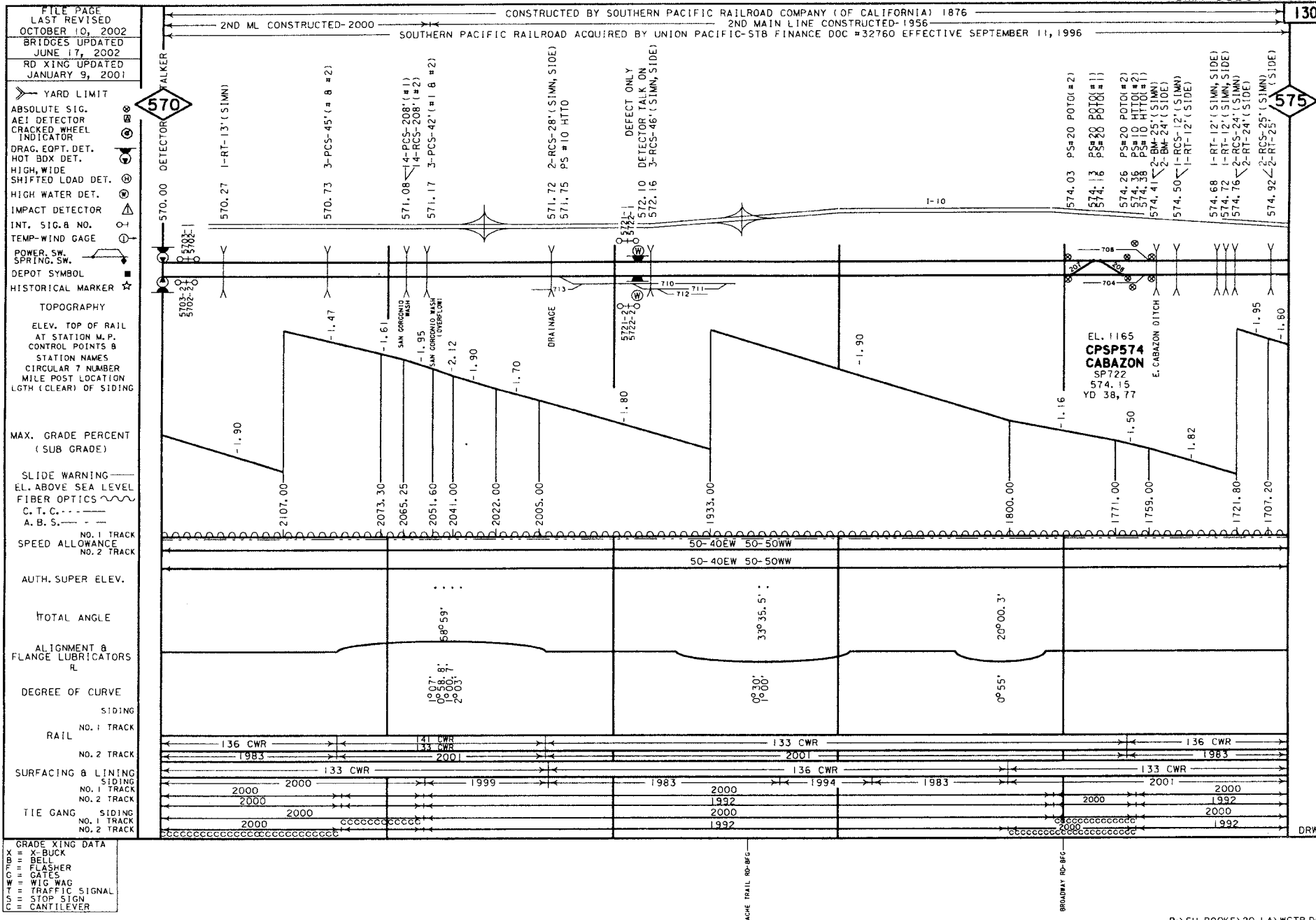
DEGREE OF CURVE

SIDING
NO. 1 TRACK
NO. 2 TRACK

SURFACING & LINING
NO. 1 TRACK
NO. 2 TRACK

TIE GANG
NO. 1 TRACK
NO. 2 TRACK

GRADE XING DATA
X = X-BUCK
B = BELL
F = FLASHER
G = GATES
W = WIG WAG
T = TRAFFIC SIGNAL
S = STOP SIGN
C = CANTILEVER



FILE PAGE
LAST REVISED
MARCH 28, 2002
BRIDGES UPDATED
OCTOBER 8, 2001
RD XING UPDATED
JANUARY 9, 2001

YARD LIMIT
ABSOLUTE SIG.
AEI DETECTOR
CRACKED WHEEL
INDICATOR
DRAG. EQPT. DET.
HOT BOX DET.
HIGH, WIDE
SHIFTED LOAD DET.
HIGH WATER DET.
IMPACT DETECTOR
INT. SIG. & NO.
TEMP. WIND GAGE
POWER SW.
SPRING SW.
DEPOT SYMBOL
HISTORICAL MARKER

TOPOGRAPHY
ELEV. TOP OF RAIL
AT STATION M.P.
CONTROL POINTS &
STATION NAMES
CIRCULAR 7 NUMBER
MILE POST LOCATION
LGTH (CLEAR) OF SIDING

MAX. GRADE PERCENT
(SUB GRADE)

SLIDE WARNING
EL. ABOVE SEA LEVEL
FIBER OPTICS
C. T. C. ---
A. B. S. ---

NO. 1 TRACK
SPEED ALLOWANCE
NO. 2 TRACK

AUTH. SUPER ELEV.

TOTAL ANGLE

ALIGNMENT &
FLANGE LUBRICATORS

DEGREE OF CURVE

SIDING

RAIL NO. 1 TRACK

NO. 2 TRACK

SURFACING & LINING

SIDING NO. 1 TRACK

NO. 2 TRACK

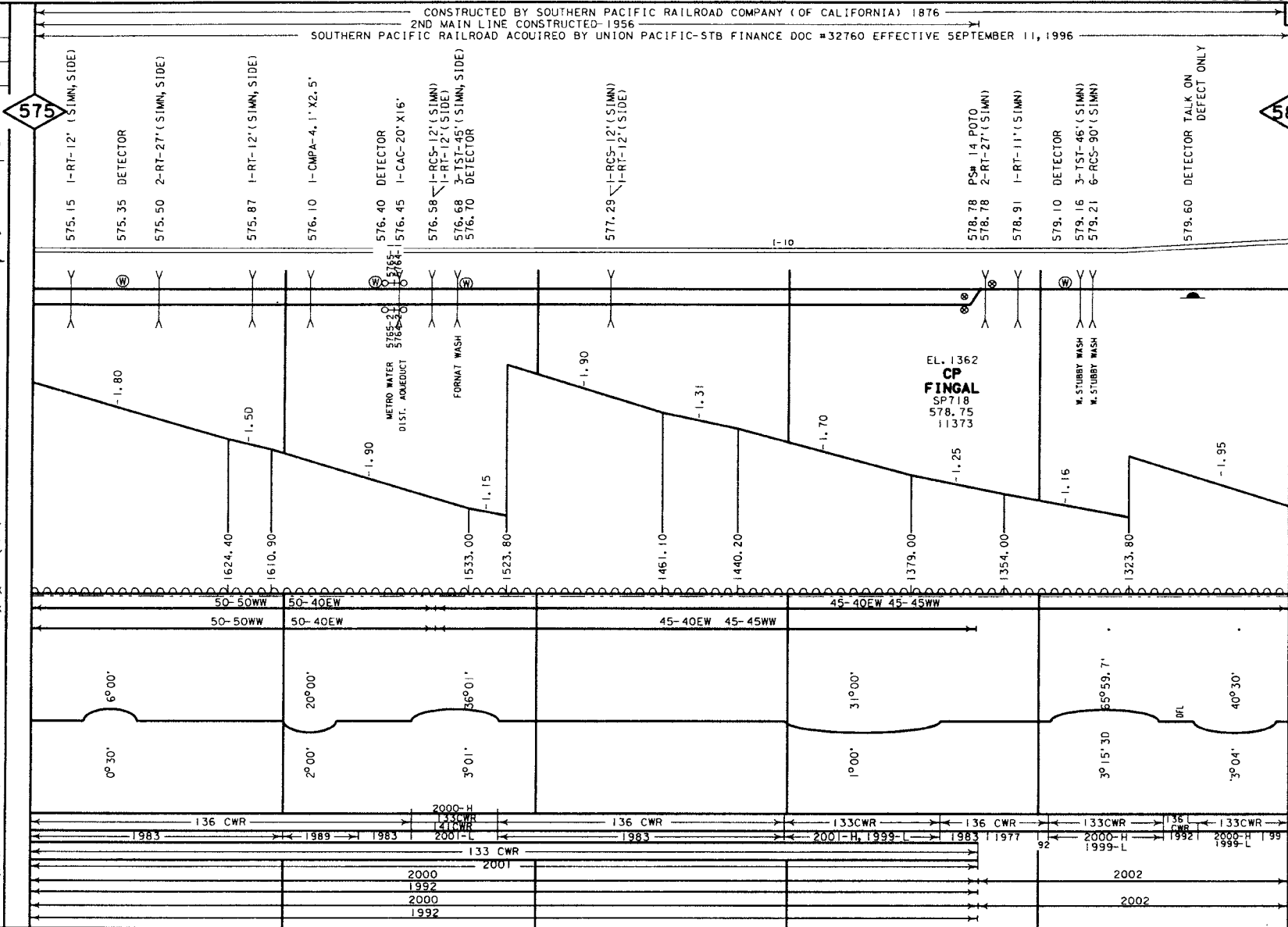
TIE GANG SIDING

NO. 1 TRACK

NO. 2 TRACK

GRADE XING DATA

X = BUCK
B = BELL
F = FLASHER
G = GATES
W = WIG WAG
T = TRAFFIC SIGNAL
S = STOP SIGN
C = CANTILEVER



575

580

CONSTRUCTED BY SOUTHERN PACIFIC RAILROAD COMPANY (OF CALIFORNIA) 1876
2ND MAIN LINE CONSTRUCTED 1956
SOUTHERN PACIFIC RAILROAD ACQUIRED BY UNION PACIFIC-5TB FINANCE DOC #32760 EFFECTIVE SEPTEMBER 11, 1996

MJS

FILE PAGE
LAST REVISED
MAY 21, 2002
BRIDGES UPDATED
OCTOBER 8, 2001
ROAD XING UPDATED
DECEMBER 27, 2000

CONSTRUCTED BY THE SOUTHERN PACIFIC RAILROAD COMPANY (OF CALIFORNIA) 1876
SOUTHERN PACIFIC RAILROAD ACQUIRED BY UNION PACIFIC-STB FINANCE DOC #32760 EFFECTIVE SEPTEMBER 11, 1996

- YARD LIMIT
- ABSOLUTE SIG.
- AEI DETECTOR
- CRACKED WHEEL INDICATOR
- DRAG, EOPT., DET.
- HOT BOX DET.
- HIGH WIDE SHIFTED LOAD DET.
- HIGH WATER DET.
- IMPACT DETECTOR
- INT. SIG. B NO.
- TEMP-WIND GAGE
- POWER, SW. SPRING, SW.
- DEPOT SYMBOL
- HISTORICAL MARKER

- TOPOGRAPHY
- ELEV. TOP OF RAIL AT STATION M.P.
- CONTROL POINTS & STATION NAMES
- CIRCULAR 7 NUMBER
- MILE POST LOCATION
- LGTH (CLEAR) OF SIDING

MAX. GRADE PERCENT (SUB GRADE)

- SLIDE WARNING
- EL. ABOVE SEA LEVEL
- FIBER OPTICS
- C. T. C.
- A. B. S.

SPEED ALL TRACKS
NO. 1 TRACK
NO. 2 TRACK

AUTH. SUPER ELEV.

TOTAL ANGLE

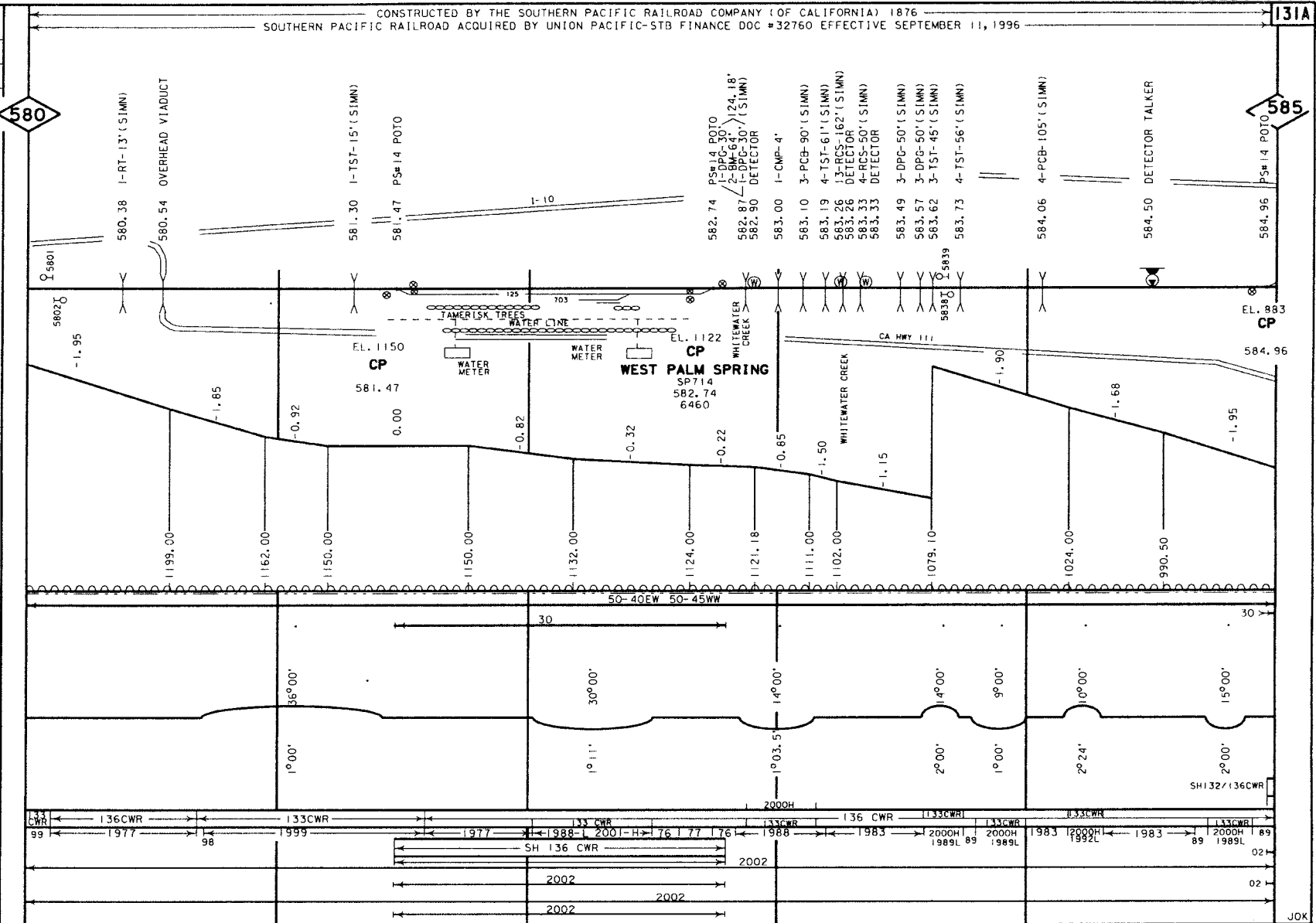
ALIGNMENT & FLANGE LUBRICATORS

DEGREE OF CURVE

RAIL
NO. 1 TRACK
NO. 2 TRACK

SURFACING & LINING
NO. 1 TRACK
NO. 2 TRACK
TIE GANG
NO. 1 TRACK
NO. 2 TRACK

- GRADE XING DATA
- X = X-BUCK
- B = BELL
- F = FLASHER
- G = GATES
- W = WIG WAG
- S = TRAFFIC SIGNAL
- STOP SIGN
- CANTILEVER

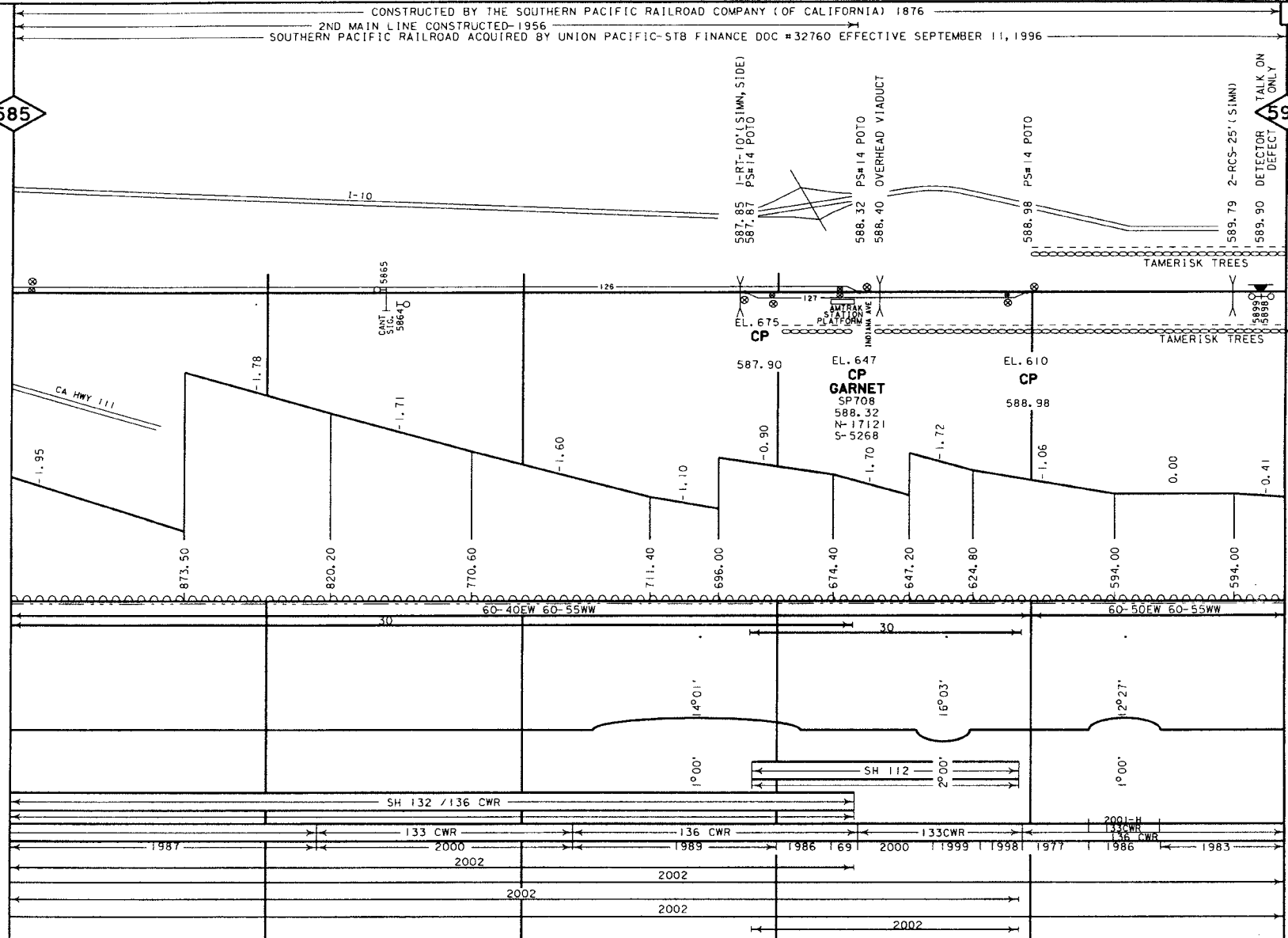


JOK

FILE PAGE
LAST REVISED
JUNE 13, 2002
BRIDGES UPDATED
OCTOBER 8, 2001
RD XING UPDATED
JANUARY 9, 2001

585

- YARD LIMIT
- ABSOLUTE SIG.
- AE1 DETECTOR
- CRACKED WHEEL INDICATOR
- DRAG. EOPT. DET.
- HOT BOX DET.
- HIGH, WIDE SHIFTED LOAD DET.
- HIGH WATER DET.
- IMPACT DETECTOR
- INT. SIG. & NO.
- TEMP-WIND GAGE
- POWER, SW. SPRING, SW.
- DEPOT SYMBOL
- HISTORICAL MARKER
- TOPOGRAPHY
- ELEV. TOP OF RAIL AT STATION M.P.
- CONTROL POINTS & STATION NAMES
- CIRCULAR T NUMBER
- MILE POST LOCATION
- LGTH (CLEAR) OF SIDING
- MAX. GRADE PERCENT (SUB GRADE)
- SLIDE WARNING
- E.L. ABOVE SEA LEVEL
- FIBER OPTICS
- C. T. C.
- A. B. S.
- SPEED ALLOWANCE
- AUTH. SUPER ELEV.
- TOTAL ANGLE
- ALIGNMENT & FLANGE LUBRICATORS
- DEGREE OF CURVE
- RAIL SIDING
- RAIL MAIN
- SURFACING & LINING
- SIDING MAIN
- TIE GANG
- SIDING MAIN



590

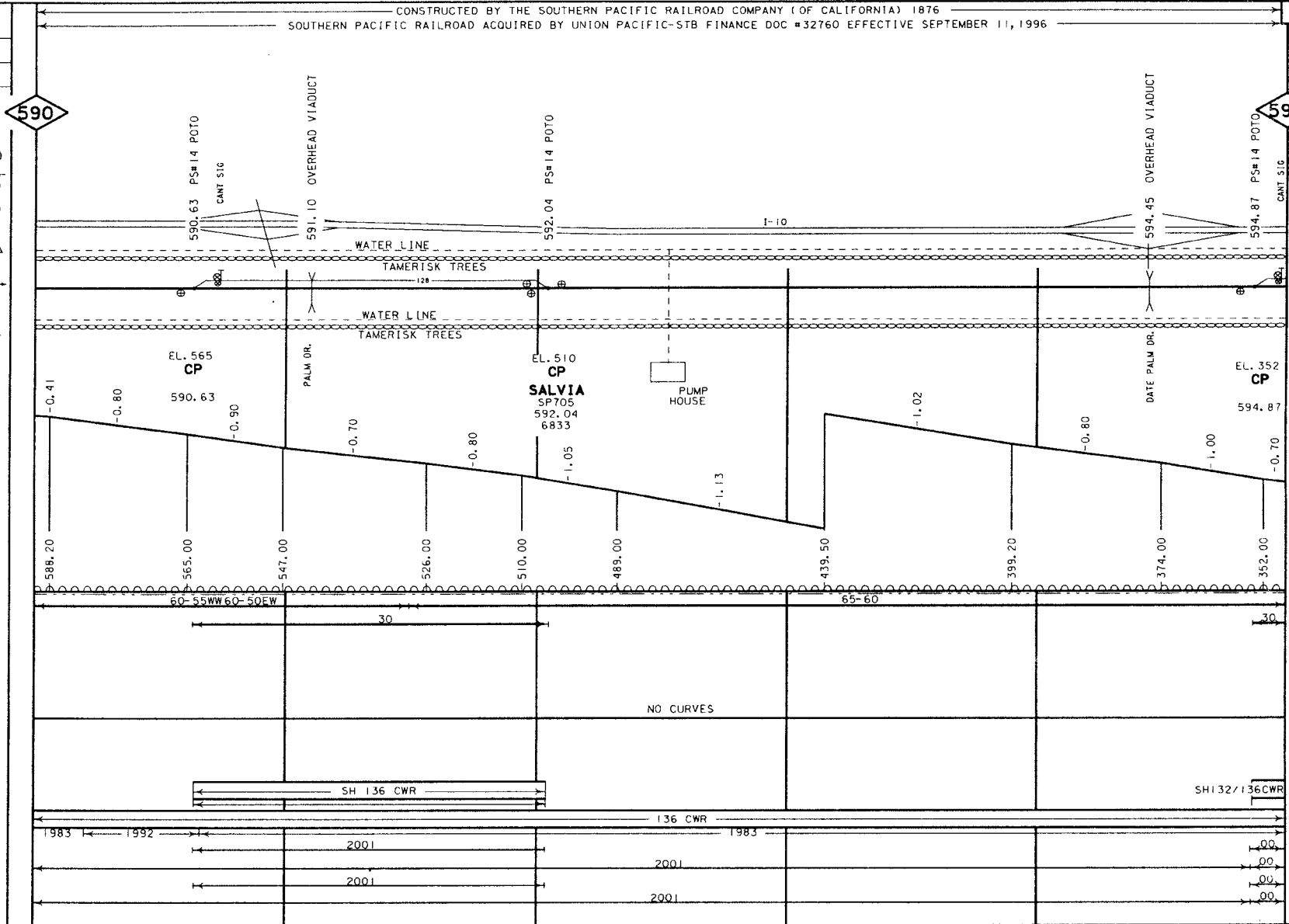
GRADE XING DATA
X-BUCK
BELLS
FLASHER
GATES
W/C WAG
TRAFFIC SIGNAL
STOP SIGN
CANTILEVER

JOK

FILE PAGE
LAST REVISED
JUNE 13, 2002
BRIDGES UPDATED
OCTOBER 8, 2001
RD XING UPDATED
JANUARY 9, 2001

CONSTRUCTED BY THE SOUTHERN PACIFIC RAILROAD COMPANY (OF CALIFORNIA) 1876
SOUTHERN PACIFIC RAILROAD ACQUIRED BY UNION PACIFIC-STB FINANCE DOC #32760 EFFECTIVE SEPTEMBER 11, 1996

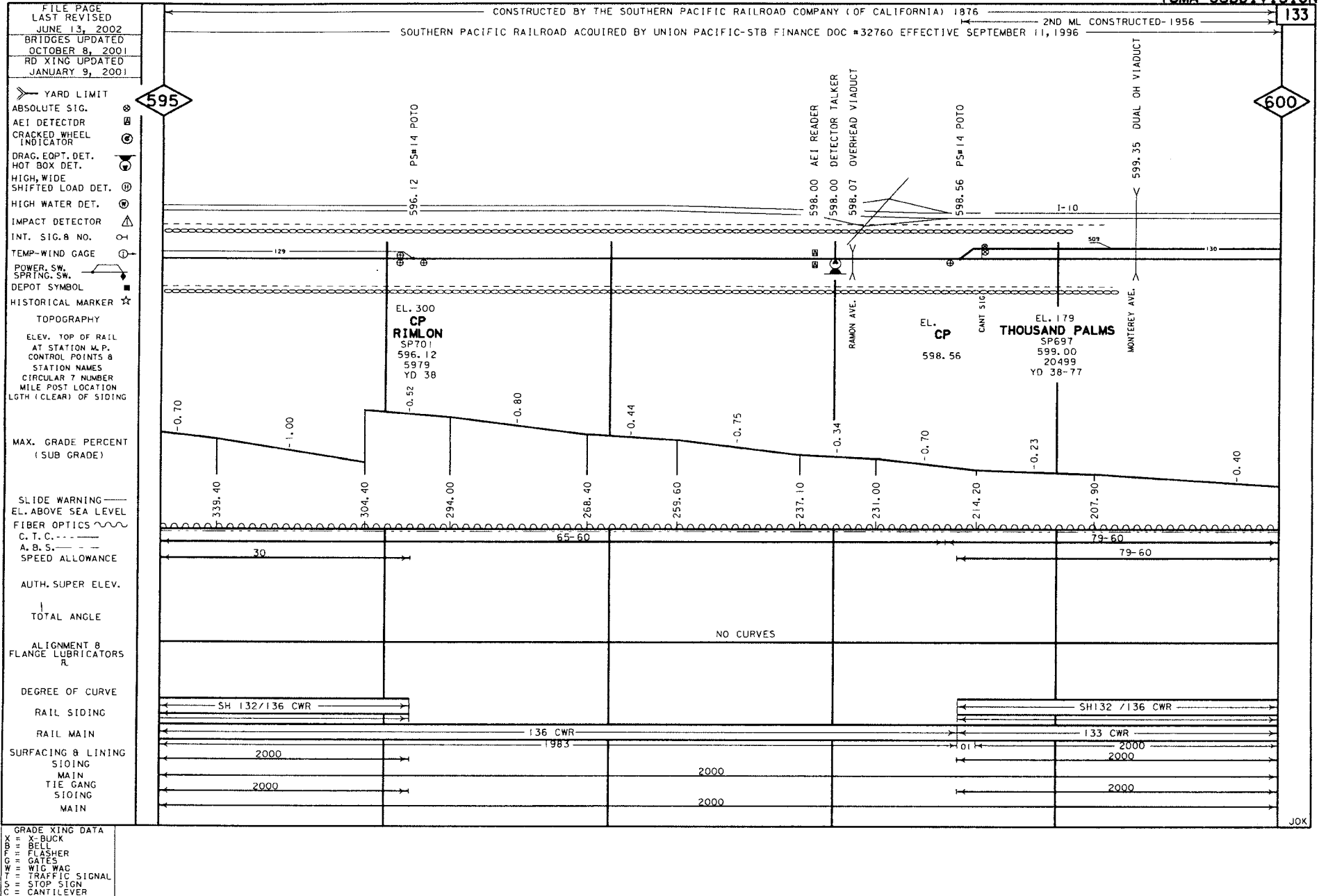
- YARD LIMIT
- ABSOLUTE SIG. Ⓢ
- AEI DETECTOR Ⓢ
- CRACKED WHEEL INDICATOR Ⓢ
- DRAG. EOPT. DET. Ⓢ
- HOT BOX DET. Ⓢ
- HIGH, WIDE SHIFTED LOAD DET. Ⓢ
- HIGH WATER DET. Ⓢ
- IMPACT DETECTOR Ⓢ
- INT. SIG. & NO. Ⓢ
- TEMP-WIND GAGE Ⓢ
- POWER. SW. Ⓢ
- SPRING. SW. Ⓢ
- DEPOT SYMBOL Ⓢ
- HISTORICAL MARKER ☆
- TOPOGRAPHY
- ELEV. TOP OF RAIL AT STATION M.P. CONTROL POINTS & STATION NAMES
- CIRCULAR 7 NUMBER
- MILE POST LOCATION
- LGTH (CLEAR) OF SIDING
- MAX. GRADE PERCENT (SUB GRADE)
- SLIDE WARNING
- EL. ABOVE SEA LEVEL
- FIBER OPTICS
- C. T. C. ---
- A. B. S. ---
- SPEED ALLOWANCE
- AUTH. SUPER ELEV.
- TOTAL ANGLE
- ALIGNMENT & FLANGE LUBRICATORS
- DEGREE OF CURVE
- RAIL SIDING
- RAIL MAIN
- SURFACING & LINING
- SIDING
- MAIN
- TIE GANG
- SIDING
- MAIN



GRADE XING DATA
X = X-BUCK
B = BELL
F = FLASHER
G = GATES
W = WIG WAG
T = TRAFFIC SIGNAL
S = STOP SIGN
C = CANTILEVER

NO CROSSINGS

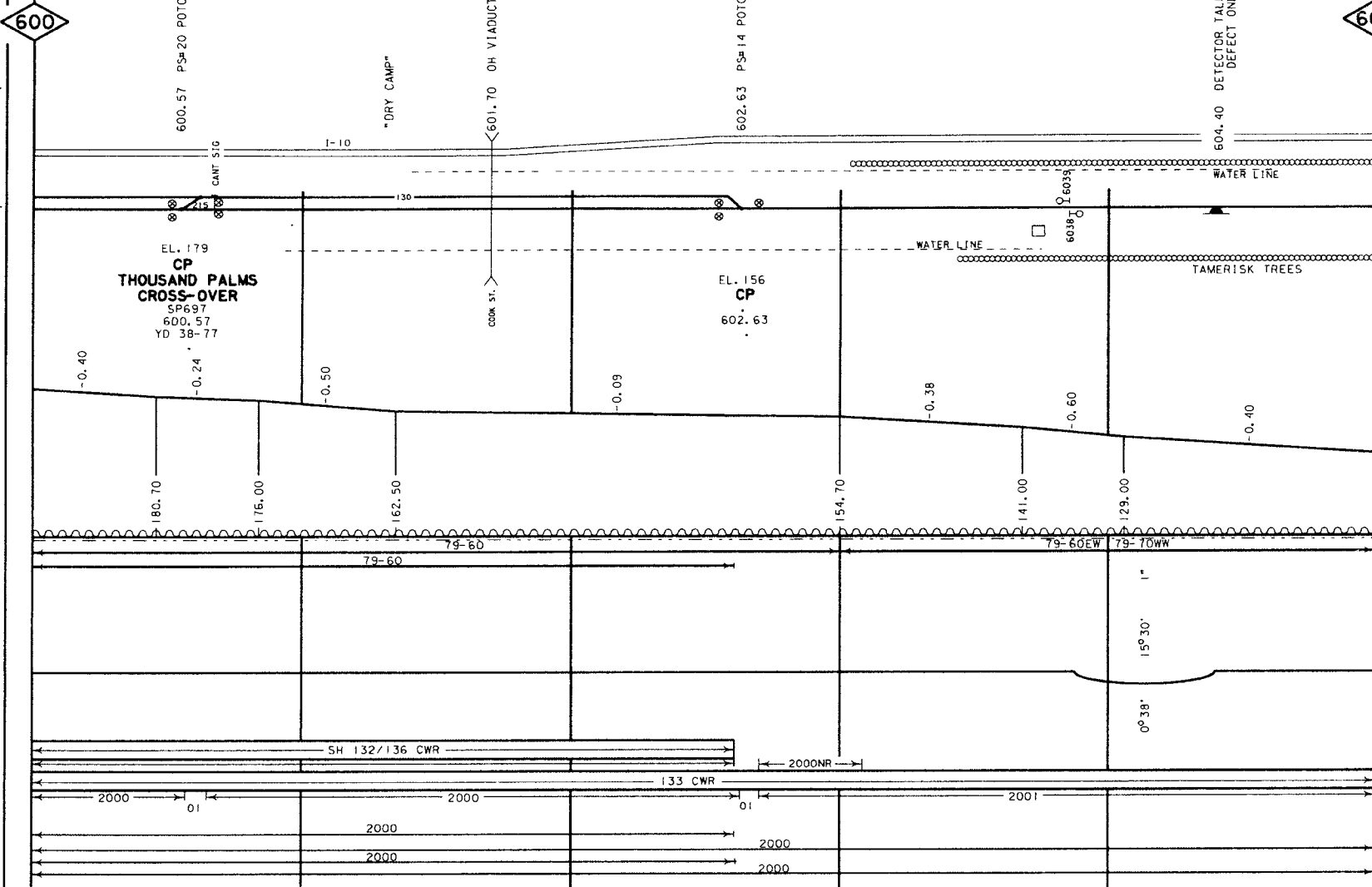
JOK



FILE PAGE
LAST REVISED
MAY 21, 2002
BRIDGES UPDATED
OCTOBER 8, 2001
RD XING UPDATED
DECEMBER 28, 2000

CONSTRUCTED BY THE SOUTHERN PACIFIC RAILROAD COMPANY (OF CALIFORNIA) - 1876
2ND ML CONSTRUCTED-1956
SOUTHERN PACIFIC RAILROAD ACQUIRED BY UNION PACIFIC - STB FINANCE DOC #32760 EFFECTIVE SEPTEMBER 11, 1996

- YARD LIMIT
- ABSOLUTE SIG.
- AEI DETECTOR
- CRACKED WHEEL INDICATOR
- DRAG. EOPT. DET.
- HOT BOX DET.
- HIGH, WIDE SHIFTEO LOAD DET.
- HIGH WATER DET.
- IMPACT DETECTOR
- INT. SIG. B NO.
- TEMP-WIND GAGE
- POWER. SW. SPRING. SW.
- DEPOT SYMBOL
- HISTORICAL MARKER
- TOPOGRAPHY
- ELEV. TOP OF RAIL AT STATION M.P.
- CONTROL POINTS B
- STATION NAMES
- CIRCULAR 7 NUMBER
- MILE POST LOCATION
- LGTH (CLEAR) OF SIDING
- MAX. GRADE PERCENT (SUB GRADE)
- SLIDE WARNING
- ELEV. ABOVE SEA LEVEL
- FIBER OPTICS
- C. T. C.
- A. B. S.
- SPEED ALLOWANCE
- AUTH. SUPER ELEV.
- TOTAL ANGLE
- ALIGNMENT & FLANGE LUBRICATORS
- DEGREE OF CURVE
- RAIL SIDING
- RAIL MAIN
- SURFACING & LINING
- SIDING MAIN
- TIE GANG
- SIDING MAIN



600

605

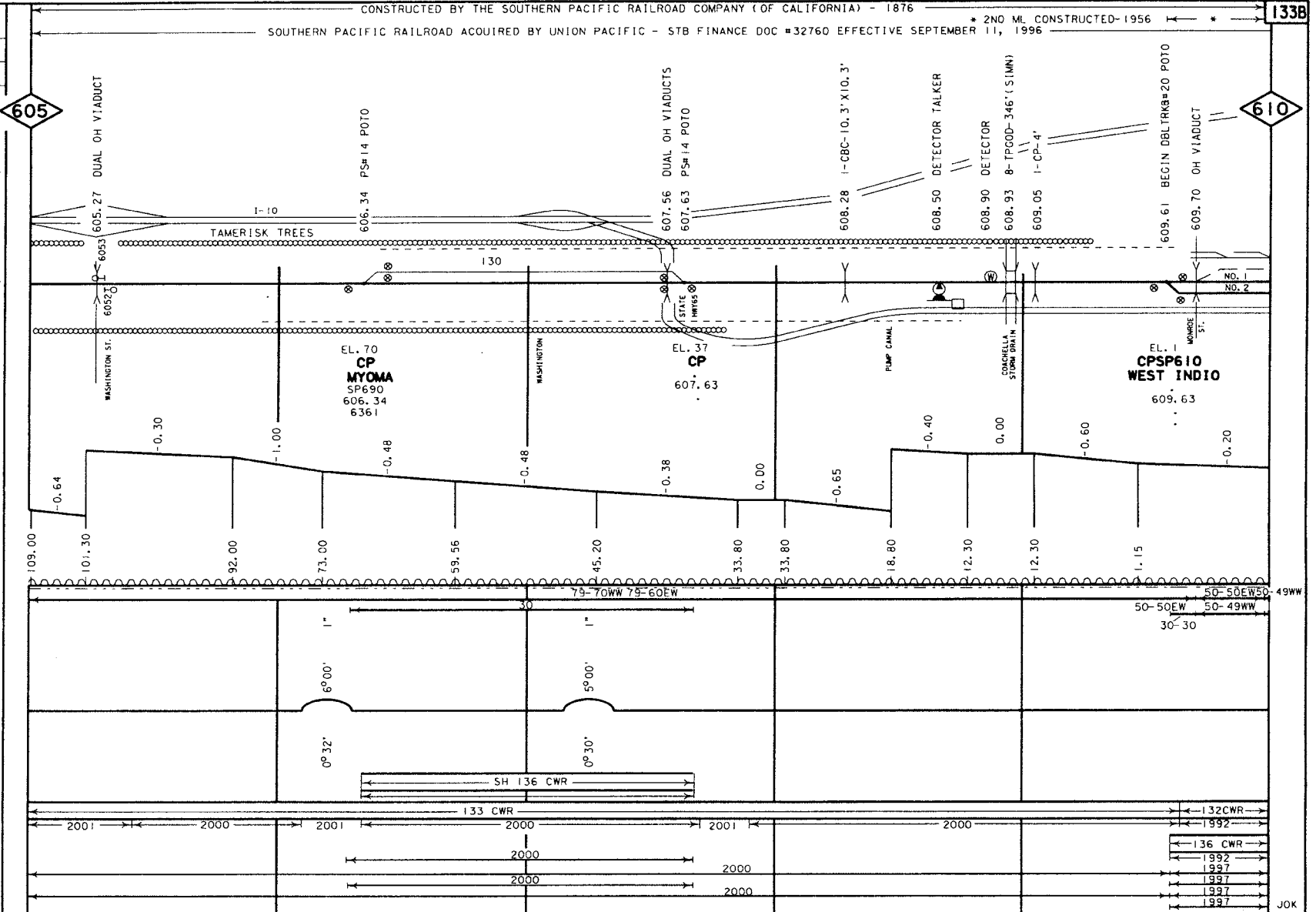
GRADE XING DATA
X = X-BUCK
B = BELL
F = FLASHER
G = GATES
W = WIG WAG
T = TRAFFIC SIGNAL
S = STOP SIGN
C = CANTILEVER

JOK

FILE PAGE
LAST REVISED
MAY 21, 2002
BRIDGES UPDATED
OCTOBER 8, 2001
RD XING UPDATED
DECEMBER 28, 2000

CONSTRUCTED BY THE SOUTHERN PACIFIC RAILROAD COMPANY (OF CALIFORNIA) - 1876
SOUTHERN PACIFIC RAILROAD ACQUIRED BY UNION PACIFIC - STB FINANCE DOC #32760 EFFECTIVE SEPTEMBER 11, 1996 * 2ND ML CONSTRUCTED-1956 *

- YARD LIMIT
- ABSOLUTE SIG.
- AEI DETECTOR
- CRACKED WHEEL INDICATOR
- DRAG. EOPT. DET.
- HOT BOX DET.
- HIGH, WIDE SHIFTED LOAD DET.
- HIGH WATER DET.
- IMPACT DETECTOR
- INT. SIG. & NO.
- TEMP-WIND GAGE
- POWER, SW.
- SPRING, SW.
- DEPOT SYMBOL
- HISTORICAL MARKER
- TOPOGRAPHY
- ELEV. TOP OF RAIL AT STATION M.P.
- CONTROL POINTS & STATION NAMES
- CIRCULAR 7 NUMBER
- MILE POST LOCATION
- LGTH (CLEAR) OF SIDING
- MAX. GRADE PERCENT (SUB GRADE)
- SLIDE WARNING
- EL. ABOVE SEA LEVEL
- FIBER OPTICS
- C. T. C.
- A. B. S.
- SPEED ALLDANCE
- AUTH. SUPER ELEV.
- TOTAL ANGLE
- ALIGNMENT & FLANGE LUBRICATORS
- DEGREE OF CURVE
- RAIL SIDING
- RAIL MAIN
- SURFACING & LINING
- SIDING MAIN
- TIE GANG
- SIDING MAIN



GRADE XING DATA
X-BUCK
BELL
FLASHER
GATES
WIG WAG
TRAFFIC SIGNAL
STOP SIGN
CANTILEVER

FILE PAGE
LAST REVISED
JUNE 13, 2002
BRIDGES UPDATED
OCTOBER 8, 2001
RD XING UPDATED
NOVEMBER 30, 2000

CONSTR. BY THE S.P.R.R CO. (OF CALIFORNIA) (1876) CONSTRUCTED BY THE SOUTHERN PACIFIC RAILROAD COMPANY (OF CALIFORNIA) - 1877
2ND ML CONSTRUCTED - 1956
SOUTHERN PACIFIC RAILROAD ACQUIRED BY UNION PACIFIC - STB FINANCE DOC #32760 EFFECTIVE SEPTEMBER 11, 1996

- YARD LIMIT
- ABSOLUTE SIG.
- AEI DETECTOR
- CRACKED WHEEL INDICATOR
- DRAG. EOPT. DET.
- HOT BOX DET.
- HIGH, WIDE SHIFTED LOAD DET.
- HIGH WATER DET.
- IMPACT DETECTOR
- INT. SIG. & NO.
- TEMP. WIND GAGE
- POWER SW. SPRING SW.
- DEPOT SYMBOL
- HISTORICAL MARKER

TOPOGRAPHY
ELEV. TOP OF RAIL AT STATION M.P. CONTROL POINTS & STATION NAMES
CIRCULAR / NUMBER
MILE POST LOCATION
LGTH (CLEAR) OF SIDING

MAX. GRADE PERCENT (SUB GRADE)

SLIDE WARNING
EL. ABOVE SEA LEVEL
FIBER OPTICS
C. T. C. ---
A. B. S. ---

NO. 1 TRACK
SPEED ALLOWANCE
NO. 2 TRACK

AUTH. SUPER ELEV.

TOTAL ANGLE

ALIGNMENT & FLANGE LUBRICATORS

DEGREE OF CURVE

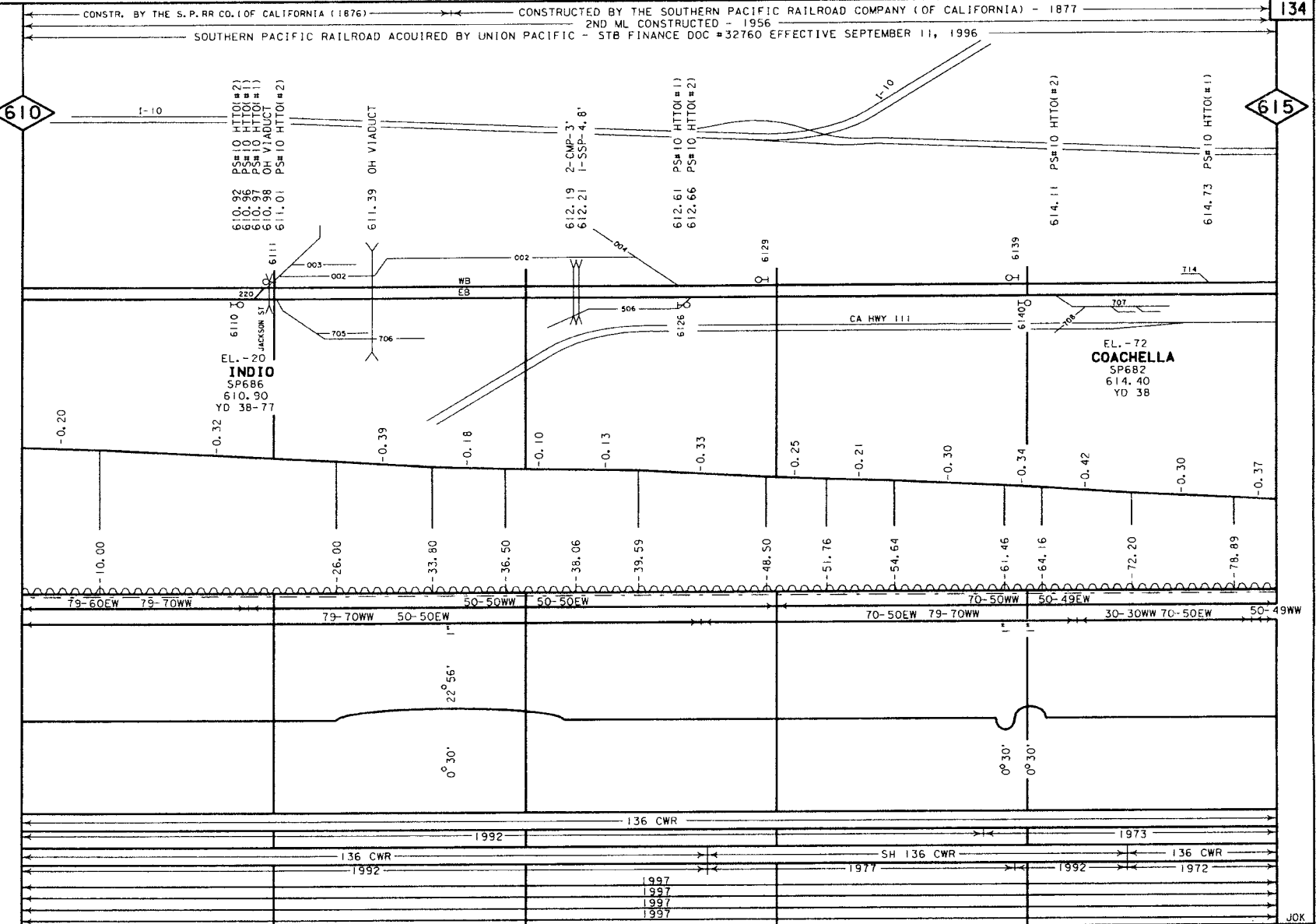
SIDING
NO. 1 TRACK
RAIL

NO. 2 TRACK

SURFACING & LINING
SIDING
NO. 1 TRACK
NO. 2 TRACK

TIE GANG
SIDING
NO. 1 TRACK
NO. 2 TRACK

GRADE XING DATA
X-BUCK
BELL
FLASHER
GATES
WIG WAG
TRAFFIC SIGNAL
STOP SIGN
CANTILEVER



610

615

INDIO
SP686
610.90
YD 38-77

EL. -72
COACHELLA
SP682
614.40
YD 38

79-60EW 79-70WW 79-70WW 50-50WW 50-50EW 50-50EW 70-50EW 79-70WW 70-50WW 50-49EW 30-30WW 70-50EW 50-49EW

22° 56'

0° 30'

0° 30'

0° 30'

136 CWR

136 CWR

SH 136 CWR

136 CWR

1992

1992

1977

1992

1972

1997

1997

1997

1997

DILLON RD-BFG

50TH AVE-BFG

5TH ST-BFG

JOK

FILE PAGE
LAST REVISED
MAY 21, 2002
BRIDGES UPDATED
OCTOBER 8, 2001
RD XING UPDATED
NOVEMBER 30, 2000

CONSTRUCTED BY THE SOUTHERN PACIFIC RAILROAD COMPANY (OF CALIFORNIA) - 1877
2ND ML CONSTRUCTED - 1956
SOUTHERN PACIFIC RAILROAD ACQUIRED BY UNION PACIFIC - STB FINANCE OOC #32760 EFFECTIVE SEPTEMBER 11, 1996

- YARD LIMIT
- ABSOLUTE SIG.
 - AEI DETECTOR
 - CRACKED WHEEL INDICATOR
 - DRAG. EDPT. DET.
 - HOT BOX DET.
 - HIGH, WIDE SHIFTED LOAD DET.
 - HIGH WATER DET.
 - IMPACT DETECTOR
 - INT. SIG. 8 NO.
 - TEMP-WIND GAGE
 - POWER, SW. SPRING, SW.
 - DEPOT SYMBOL
 - HISTORICAL MARKER

TOPOGRAPHY

- ELEV. TOP OF RAIL AT STATION M. P.
- CONTROL POINTS & STATION NAMES
- CIRCULAR 7 NUMBER
- MILE POST LOCATION
- LGTH (CLEAR) OF SIDING

MAX. GRADE PERCENT (SUB GRADE)

SLIDE WARNING
EL. ABOVE SEA LEVEL
FIBER OPTICS
C. T. C.
A. B. S.

NO. 1 TRACK SPEED ALLOWANCE
NO. 2 TRACK

AUTH. SUPER ELEV.

TOTAL ANGLE

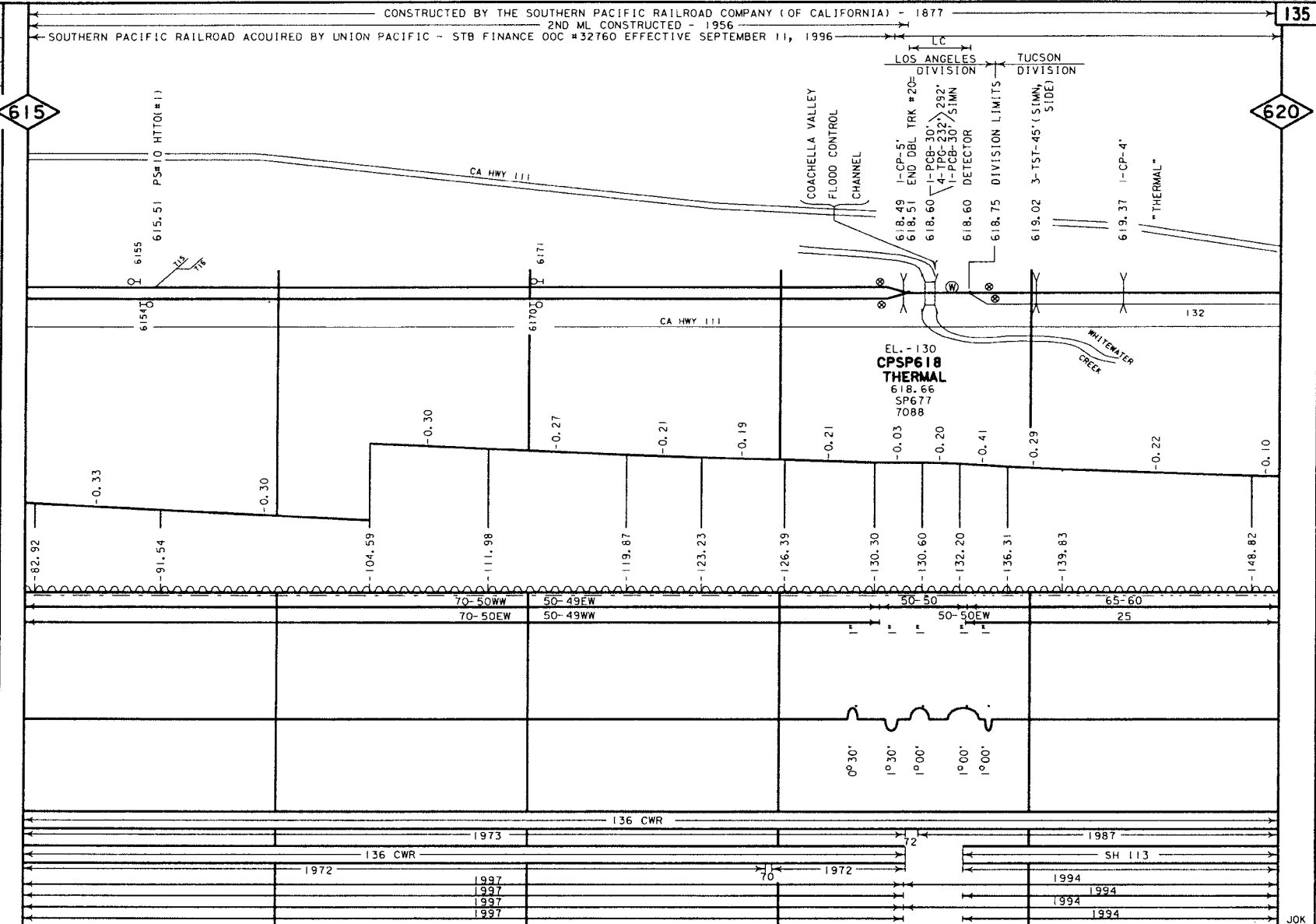
ALIGNMENT & FLANGE LUBRICATORS

DEGREE OF CURVE

SIDING
NO. 1 TRACK
RAIL
NO. 2 TRACK

SURFACING & LINING
NO. 1 TRACK
NO. 2 TRACK
TIE GANG
NO. 1 TRACK
NO. 2 TRACK

GRADE XING DATA
X = X-BUCK
B = BELL
F = FLASHER
G = GATES
W = W/O WAG
T = TRAFFIC SIGNAL
S = STOP SIGN
C = CANTILEVER



615

620