

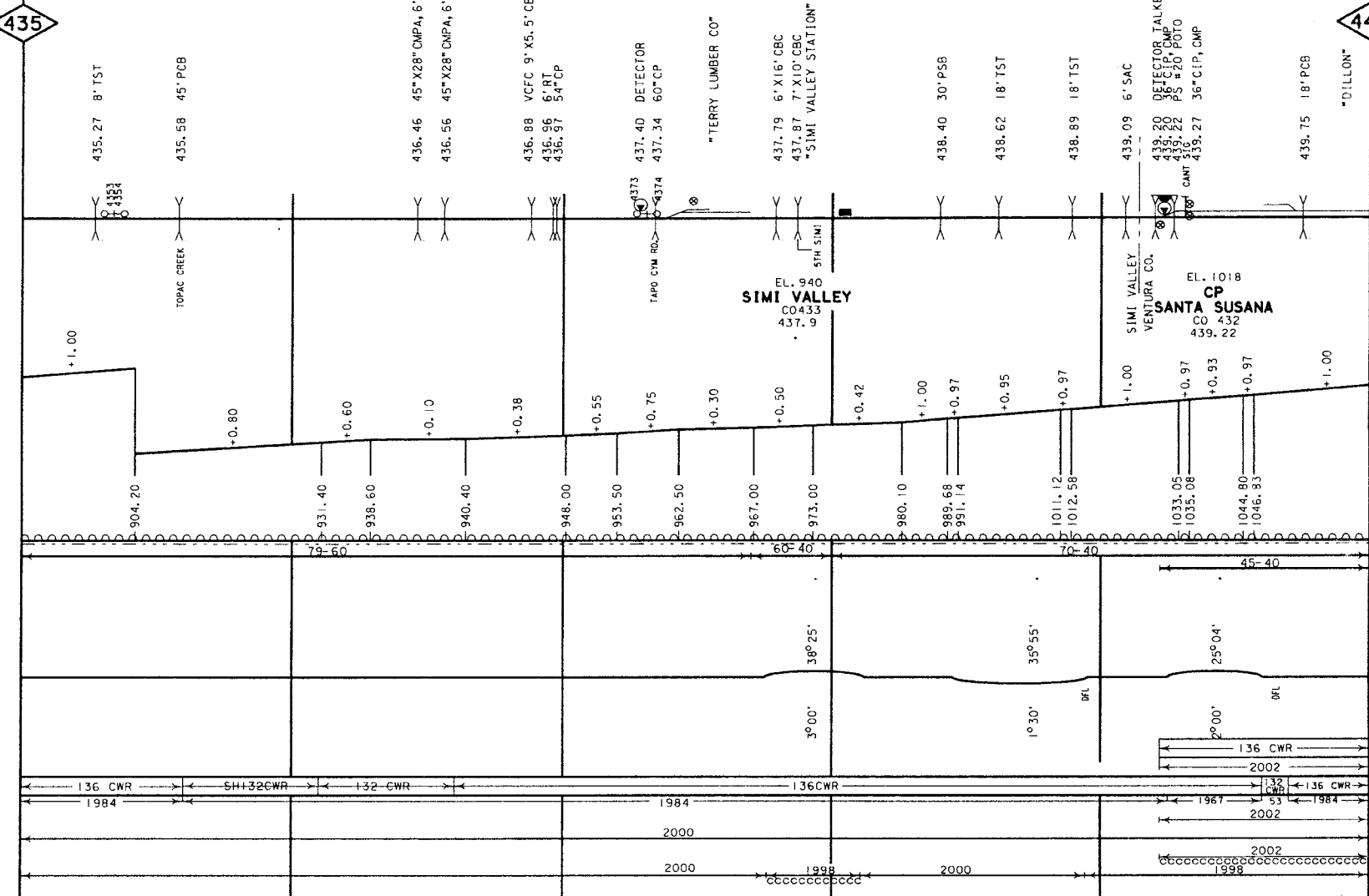
VENTURA SUBDIVISION

FILE PAGE
LAST REVISED
JUNE 13, 2002
BRIDGES UPDATED
NOVEMBER 2, 2000
RD XING UPDATED
NOVEMBER 2, 2000

CONSTRUCTED BY SOUTHERN PACIFIC RAILROAD - 1900 "MONTAVALO CUTOFF"
OPERATED AND MAINTAINED BY SCRRA PER AGREEMENT #
SHARED USE AGREEMENT BETWEEN SOUTHERN PACIFIC AND LOS ANGELES COUNTY TRANSPORTATION COMMISSION, DATED APRIL 18, 1991. DISPATCHING AND MAINTENANCE
PERFORMED BY SCRRA, DECEMBER, 1995. SOLD 40' WIDE CORRIDOR TO VENTURA CO. TRANSPORTATION COMM. ON EAST EDGE OF ROW RESERVING FIBRE OPTICS EASEMENT 9-27-1991
SOUTHERN PACIFIC RAILROAD ACQUIRED BY UNION PACIFIC - STB FINANCE DOC #32760 EFFECTIVE SEPTEMBER 11, 1996

77A

- YARD LIMIT
- ABSOLUTE SIG.
- AEI DETECTOR
- CRACKED WHEEL INDICATOR
- DRAG. EDPT. DET.
- HOT BOX DET.
- HIGH, WIDE SHIFTED LOAD DET.
- HIGH WATER DET.
- IMPACT DETECTOR
- INT. SIG. B NO.
- TEMP-WIND GAGE
- POWER, SW. SPRING, SW.
- DEPOT SYMBOL
- HISTORICAL MARKER
- TOPOGRAPHY
- ELEV. TOP OF RAIL AT STATION M.P.
- CONTROL POINTS B
- STATION NAMES
- CIRCULAR 7 NUMBER
- MILE POST LOCATION
- LGTH (CLEAR) OF SIDING
- MAX. GRADE PERCENT (SUB GRADE)
- SLIDE WARNING
- EL. ABOVE SEA LEVEL
- FIBER OPTICS
- C. T. C.
- A. B. S.
- NO. 1 TRACK
- SPEED ALLOWANCE
- NO. 2 TRACK
- AUTH. SUPER ELEV.
- TOTAL ANGLE
- ALIGNMENT B
- FLANGE LUBRICATORS
- DEGREE OF CURVE
- SIDING
- RAIL
- NO. 1 TRACK
- NO. 2 TRACK
- SURFACING & LINING
- SIDING
- NO. 1 TRACK
- NO. 2 TRACK
- TIE GANG
- SIDING
- NO. 1 TRACK
- NO. 2 TRACK

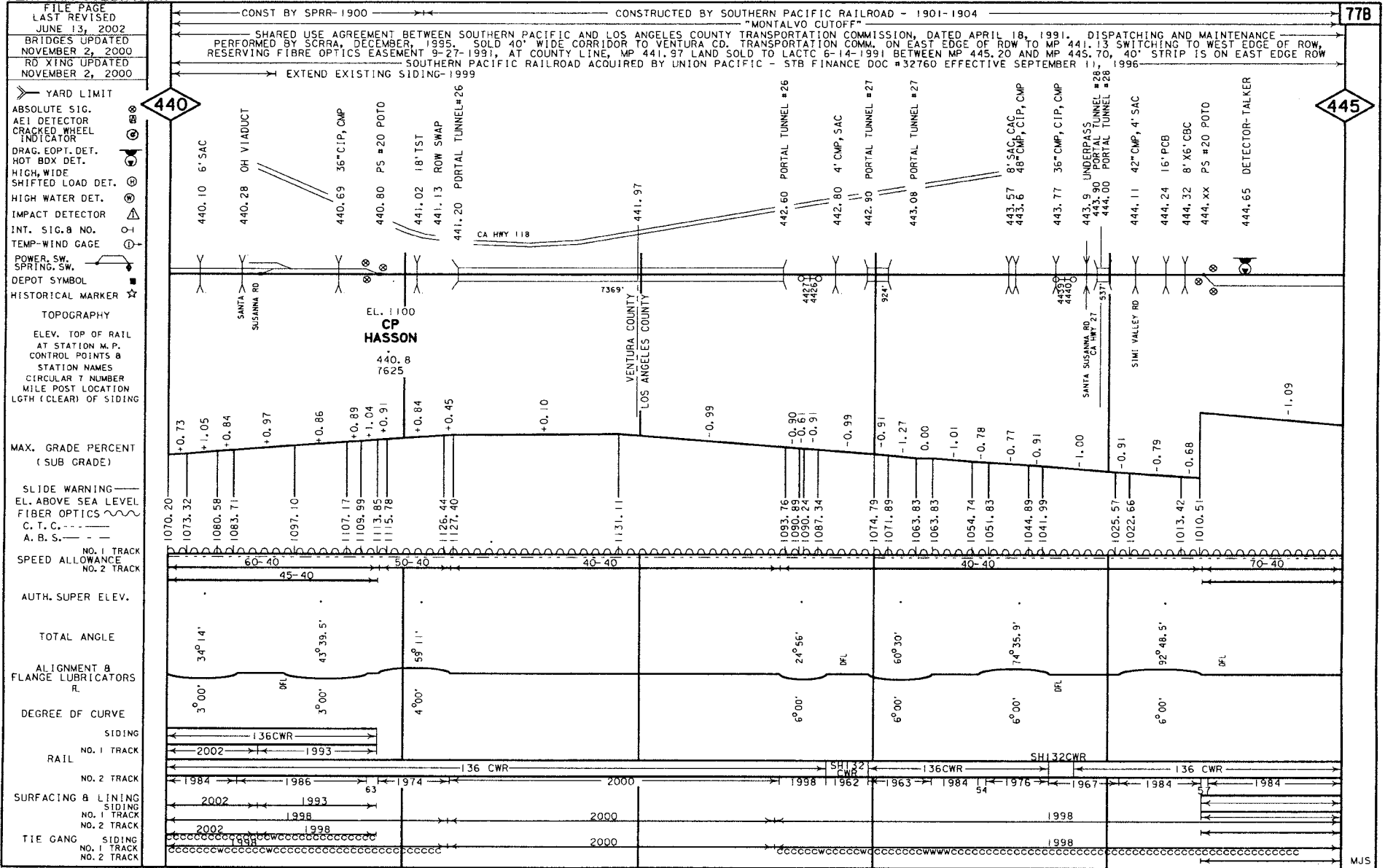


440

GRADE XING DATA
X-BUCK
BELL
FLASHER
GATES
W/C WAG
TRAFFIC SIGNAL
STOP SIGN
CANTILEVER

SYCAMORE ST-BFG
SEEDOIA AVE-BFG
TAPO CANYON RD-BFG
TAPO ST-BFG
LOS ANGELES AVE-BFG
PRIVATE-S
MATHERINE RD-BFG

MJS



77B

445

GRADE CROSSING DATA

X-BUCK

BELL

FLASHER

GATES

W/C WAG

TRAFFIC SIGNAL

STOP SIGN

CANTILEVER

CHITSMITH ST-BFC

VENTURA SUBDIVISION

FILE PAGE
LAST REVISED
JUNE 13, 2002
BRIDGES UPDATED
NOVEMBER 2, 2000
RD X'ING UPDATED
NOVEMBER 2, 2000

CONSTRUCTED BY SOUTHERN PACIFIC RAILROAD - 1906

* SHARED USE AGREEMENT BETWEEN SOUTHERN PACIFIC AND LOS ANGELES COUNTY TRANSPORTATION COMMISSION, DATED APRIL 18, 1991. DISPATCHING AND MAINTENANCE PERFORMED BY SCRRRA, DECEMBER, 1995. SOLD 40' WIDE CORRIDOR TO VENTURA CO. TRANSPORTATION COMM. ON EAST EDGE OF ROW TO MP 441.13 SWITCHING TO WEST EDGE OF ROW, RESERVING FIBRE OPTICS EASEMENT 9-27-1991, AT COUNTY LINE, MP 441.97 LAND SOLD TO LACTC 6-14-1991 BETWEEN MP 445.20 AND MP 445.70, 40' STRIP IS ON EAST EDGE ROW

SOUTHERN PACIFIC RAILROAD ACQUIRED BY UNION PACIFIC - STB FINANCE DOC #32760 EFFECTIVE SEPTEMBER 11, 1996

* CONSTRUCTED BY SOUTHERN PACIFIC RAILROAD - 1901-1904

YARD LIMIT

- ABSOLUTE SIG. (A)
- AE1 DETECTOR (B)
- CRACKED WHEEL INDICATOR (C)
- DRAG. EOPT. DET. (D)
- HOT BOX DET. (E)
- HIGH WIDE SHIFTEO LOAD DET. (F)
- HIGH WATER DET. (G)
- IMPACT DETECTOR (H)
- INT. SIG. B NO. (I)
- TEMP-WIND GAGE (J)
- POWER SW. (K)
- SPRING SW. (L)
- DEPOT SYMBOL (M)
- HISTORICAL MARKER (N)

TOPOGRAPHY

- ELEV. TOP OF RAIL AT STATION M.P.
- CONTROL POINTS & STATION NAMES
- CIRCULAR 7 NUMBER
- MILE POST LOCATION
- LGTH (CLEAR) OF SIDING

MAX. GRADE PERCENT (SUB GRADE)

- SLIDE WARNING
- ELEV. ABOVE SEA LEVEL
- FIBER OPTICS
- C. T. C.
- A. B. S.

SPEED ALLOWANCE

AUTH. SUPER ELEV.

TOTAL ANGLE

ALIGNMENT & FLANGE LUBRICATORS

DEGREE OF CURVE

SIDING

RAIL

NO. 1 TRACK

NO. 2 TRACK

SURFACING & LINING

NO. 1 TRACK

NO. 2 TRACK

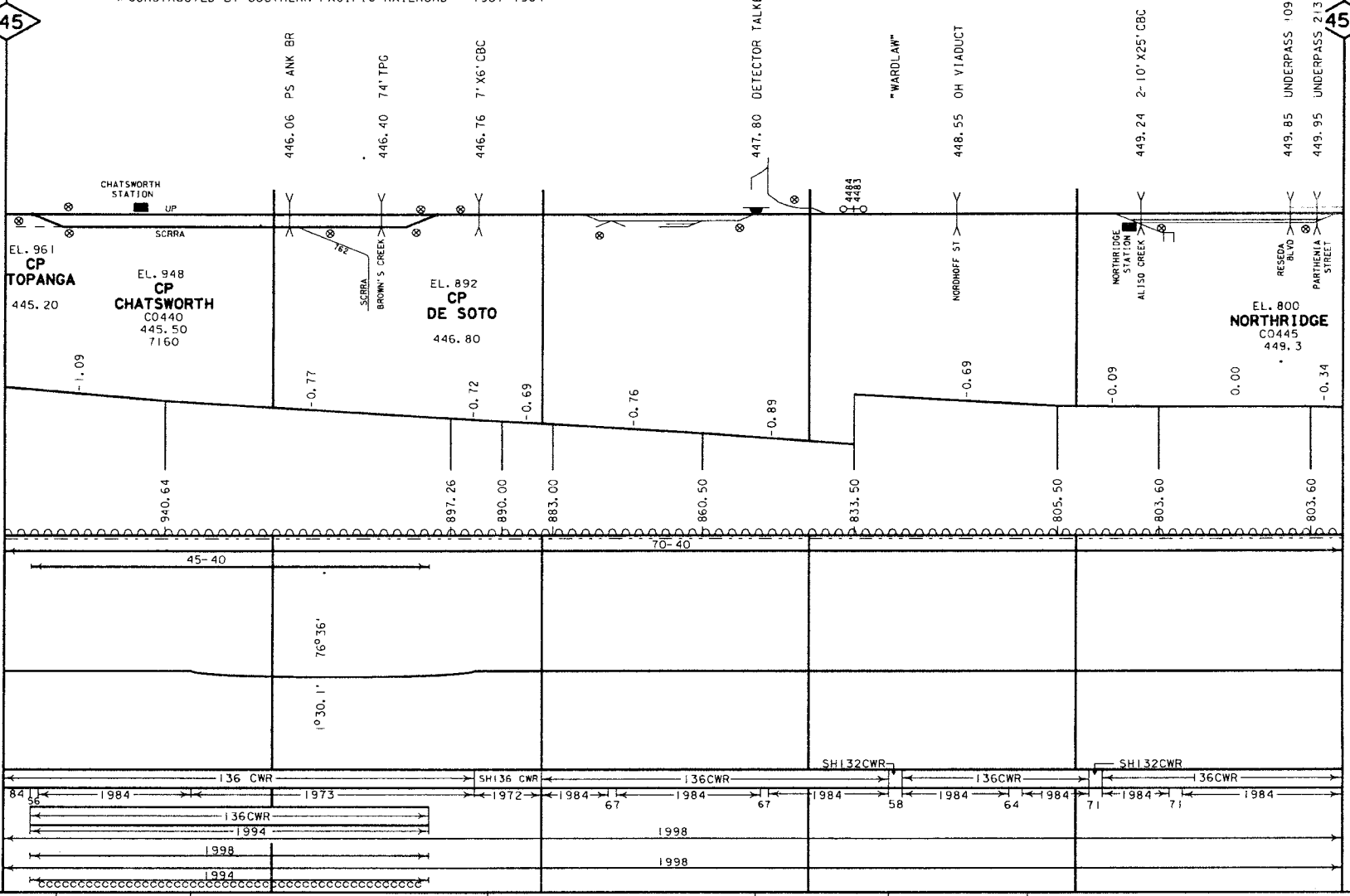
TIE GANG

NO. 1 TRACK

NO. 2 TRACK

GRADE X'ING DATA

- X = BUCK
- B = BELLY
- F = FLASHER
- G = GATES
- W = WIG WAG
- T = TRAFFIC SIGNAL
- C = STOP SIGN
- C = CANTILEVER

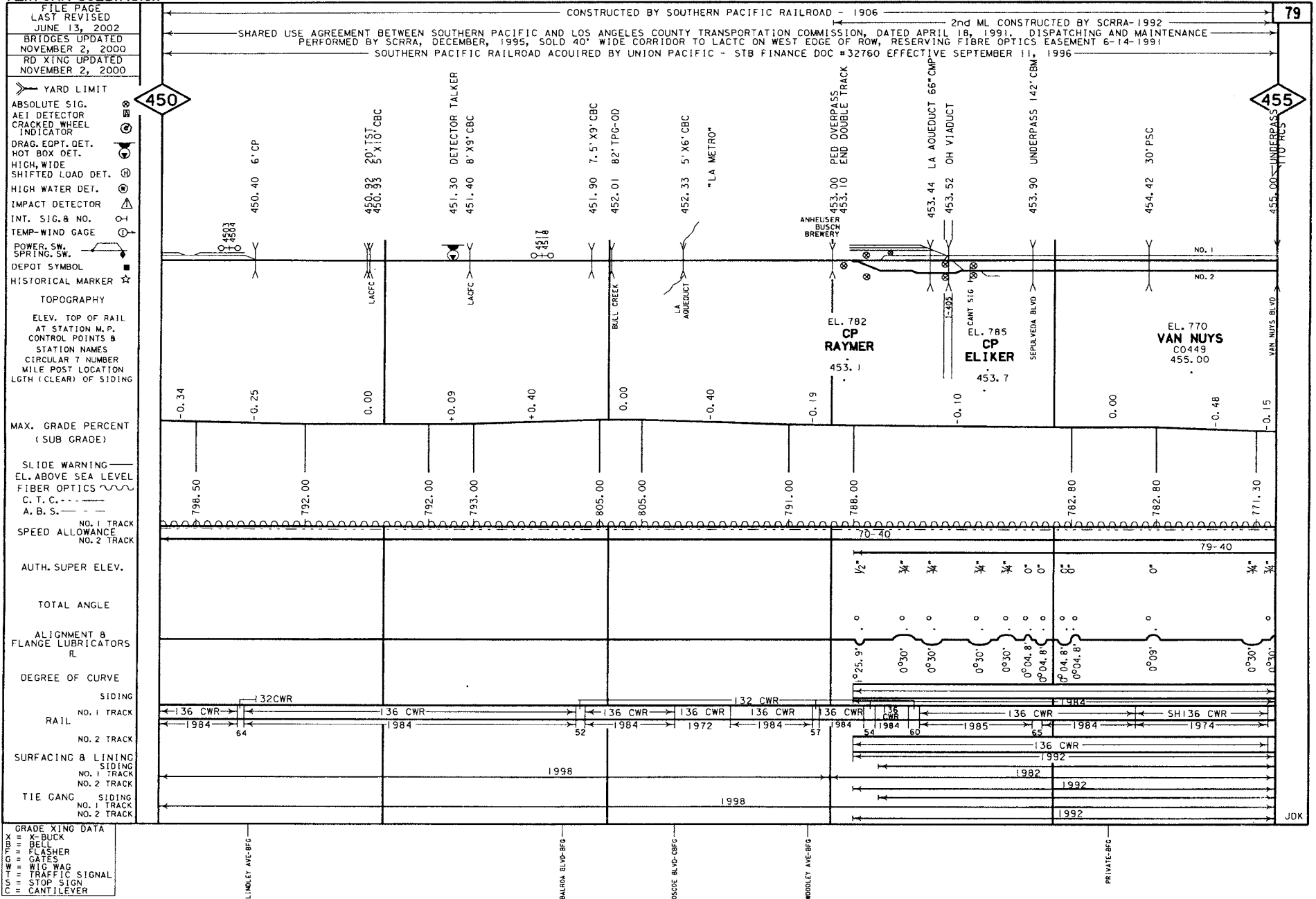


445

78

450

JOK



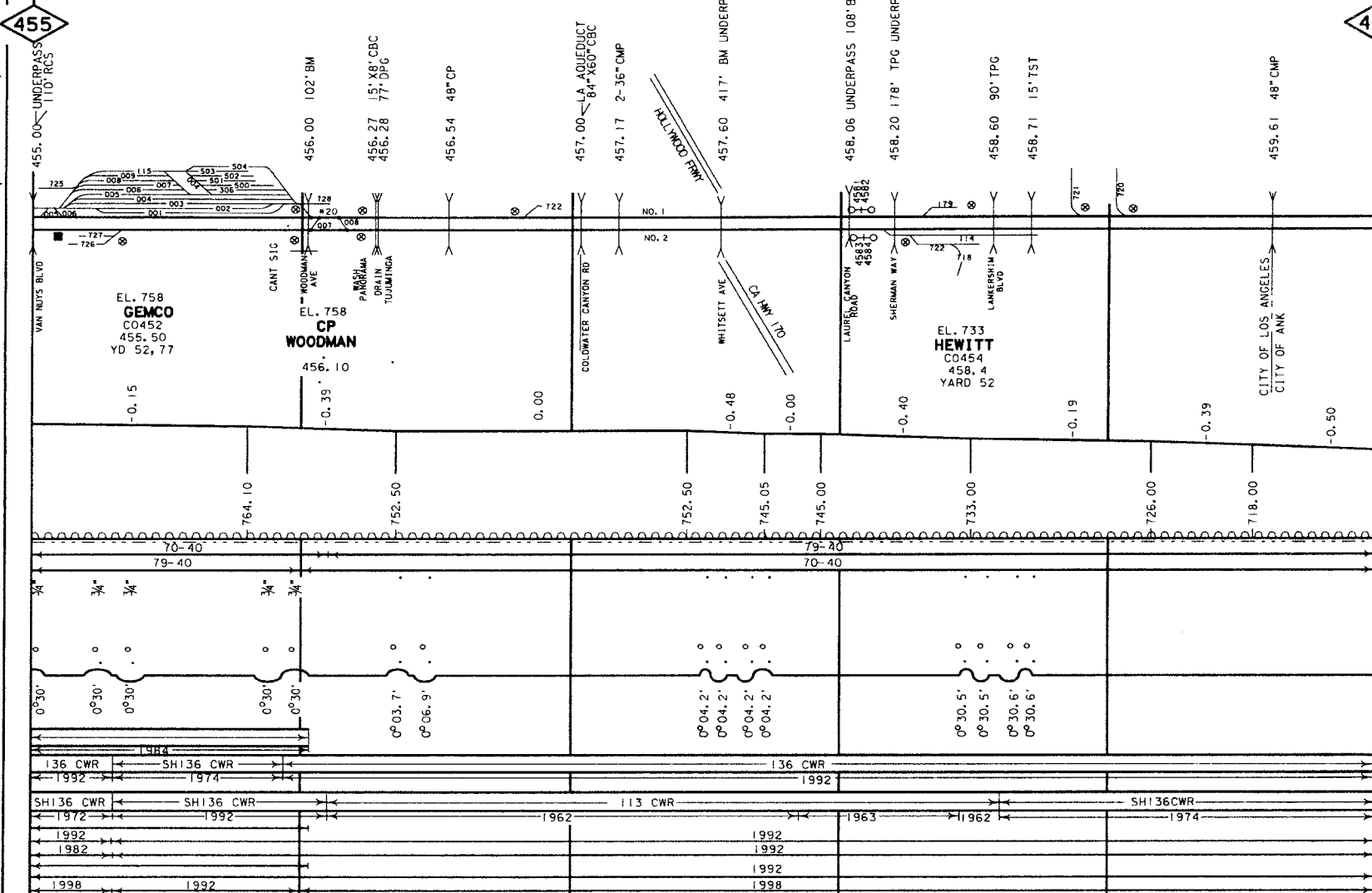
VENTURA SUBDIVISION

FILE PAGE
 LAST REVISED
 MAY 06, 2002
 BRIDGES UPDATED
 NOVEMBER 2, 2000
 ROAD CROSSING UPDATED
 NOVEMBER 2, 2000

CONSTRUCTED BY SOUTHERN PACIFIC RAILROAD - 1906
 2nd ML CONSTRUCTED BY SCRRA-1992
 SHARED USE AGREEMENT BETWEEN SOUTHERN PACIFIC AND LOS ANGELES COUNTY TRANSPORTATION COMMISSION, DATED APRIL 18, 1991, DISPATCHING AND MAINTENANCE PERFORMED BY SCRRA, DECEMBER, 1995, SOLD 40' WIDE CORRIDOR TO LACTIC ON WEST EDGE OF ROW, RESERVING FIBRE OPTICS EASEMENT 6-14-1991
 SOUTHERN PACIFIC RAILROAD ACQUIRED BY UNION PACIFIC - STB FINANCE DOC #32760 EFFECTIVE SEPTEMBER 11, 1996

79A

- YARD LIMIT
- ABSOLUTE SIG.
- AE1 DETECTOR
- CRACKED WHEEL INDICATOR
- DRAG, EOPT. DET.
- HOT BOX DET.
- HIGH, WIDE
- SHIFTED LOAD DET.
- HIGH WATER DET.
- IMPACT DETECTOR
- INT. SIG. B NO.
- TEMP-WIND GAGE
- POWER, SW.
- SPRING, SW.
- DEPOT SYMBOL
- HISTORICAL MARKER
- TOPOGRAPHY
- ELEV. TOP OF RAIL AT STATION M.P.
- CONTROL POINTS & STATION NAMES
- CIRCULAR 7 NUMBER
- MILE POST LOCATION
- LGTH (CLEAR) OF SIDING
- MAX. GRADE PERCENT (SUB GRADE)
- SLIDE WARNING
- E.L. ABOVE SEA LEVEL
- FIBER OPTICS
- C. T. C. ---
- A. B. S. ---
- NO. 1 TRACK SPEED ALLOWANCE
- NO. 2 TRACK
- AUTH. SUPER ELEV.
- TOTAL ANGLE
- ALIGNMENT & FLANGE LUBRICATORS
- RAIL
- NO. 1 TRACK
- NO. 2 TRACK
- SURFACING & LINING
- NO. 1 TRACK
- NO. 2 TRACK
- TIE GANG SIDING
- NO. 1 TRACK
- NO. 2 TRACK



460

GRADE CROSSING DATA
 X-BUCK
 BELLY
 FLASHER
 GATES
 WIG WAG
 TRAFFIC SIGNAL
 STOP SIGN
 CANTILEVER

MJS

FILE PAGE
LAST REVISED
JULY 24, 2002
BRIDGES UPDATED
NOVEMBER 2, 2000
ROAD XING UPDATED
NOVEMBER 2, 2000

CONST BY SPRR-1906
2ND M/L CONST BY SCRRA-1992
SOUTHERN PACIFIC RAILROAD ACQUIRED BY UNION PACIFIC - STB FINACE DOC #32760
EFFECTIVE 9-11-1996, SOLD 40' CORRIDOR TO LACTO ON WEST EDGE OF ROW, RESERVING
FIBRE OPTICS EASEMENT 6-14-1991

* SHARED USE AGREEMENT BETWEEN SOUTHERN PACIFIC,
AND LOS ANGELES COUNTY TRANSPORTATION COMMISSION,
DATED APRIL 18, 1991, DISPATCHING AND
MAINTENANCE PERFORMED BY SCRRA, DECEMBER 1995

- YARD LIMIT
- ABSOLUTE SIG.
- AEL DETECTOR
- CRACKED WHEEL INDICATOR
- DRAG. EOPT. DET.
- HOT BOX DET.
- HIGH, WIDE
- SHIFTED LOAD DET.
- HIGH WATER DET.
- IMPACT DETECTOR
- INT. SIG. & NO.
- TEMP. WIND GAGE
- POWER. SW.
- SPRING. SW.
- DEPOT SYMBOL
- HISTORICAL MARKER

460

- TOPOGRAPHY
- ELEV. TOP OF RAIL AT STATION M. P.
- CONTROL POINTS & STATION NAMES
- CIRCULAR 7 NUMBER MILE POST LOCATION
- LGTH (CLEAR) OF SIDING

MAX. GRADE PERCENT (SUB GRADE)

- SLIDE WARNING
- EL. ABOVE SEA LEVEL
- FIBER OPTICS
- C. T. C.
- A. B. S.

NO. 1 TRACK SPEED ALLOWANCE

AUTH. SUPER ELEV.

TOTAL ANGLE

ALIGNMENT & FLANGE LUBRICATORS

DEGREE OF CURVE

SIDING

RAIL

NO. 2 TRACK

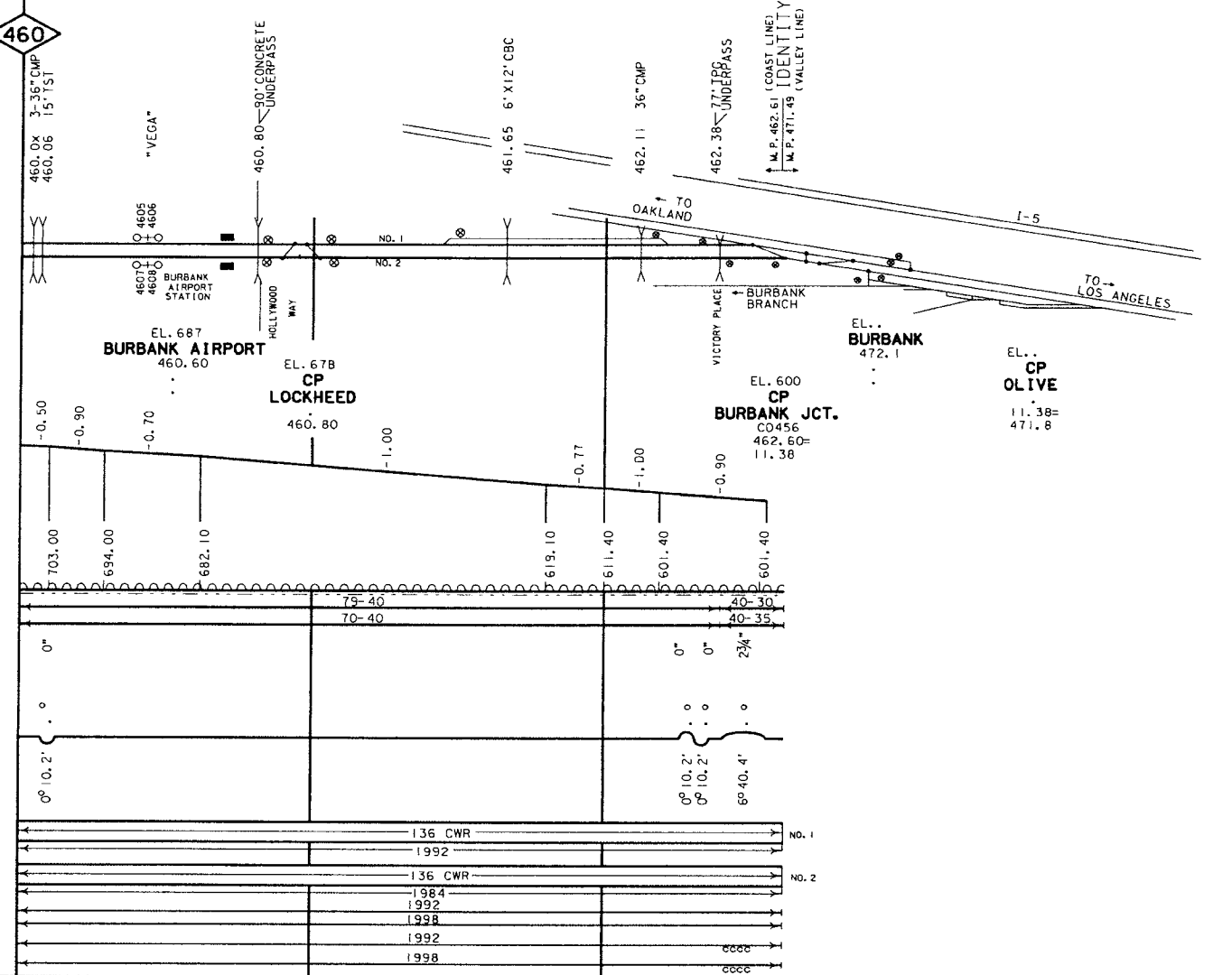
SURFACING & LINING

NO. 1 TRACK

NO. 2 TRACK

TIE GANG

- GRADE XING DATA
- X-BUCK
- BELL
- FLASHER
- GATES
- W/C WAG
- TRAFFIC SIGNAL
- STOP SIGN
- CANTILEVER



CLYBURN AVE-BFG

PED XING-BFG

BUEM VISTA ST-BFG

MJS