

FILE PAGE
LAST REVISED
OCTOBER 11, 2001
BRIDGES UPDATED
OCTOBER 10, 2000
RD XING UPDATED
OCTOBER 10, 2000

- YARD LIMIT
- ⊗ ABSOLUTE SIG.
- ⊠ AEI DETECTOR
- ⊙ CRACKED WHEEL INDICATOR
- ⊖ DRAG. EOPT. DET. HOT BOX DET.
- ⊕ HIGH, WIDE SHIFTED LOAD DET.
- ⊗ HIGH WATER DET.
- ⊠ IMPACT DETECTOR
- ⊖ INT. SIG. & NO.
- ⊖ TEMP. WIND GAGE
- ⊖ POWER SW. SPRING SW.
- DEPOT SYMBOL
- ☆ HISTORICAL MARKER

TOPOGRAPHY
ELEV. TOP OF RAIL
AT STATION M.P.
CONTROL POINTS &
STATION NAMES
CIRCULAR ? NUMBER
MILE POST LOCATION
LGTH (CLEAR) OF SIOING

MAX. GRADE PERCENT
(SUB GRADE)

SLIDE WARNING —
EL. ABOVE SEA LEVEL
FIBER OPTICS ~~~~~
C. T. C. - - - -
A. B. S. - - - -
SPEED ALLOWANCE

AUTH. SUPER ELEV.
↓

TOTAL ANGLE

ALIGNMENT &
FLANGE LUBRICATORS
R

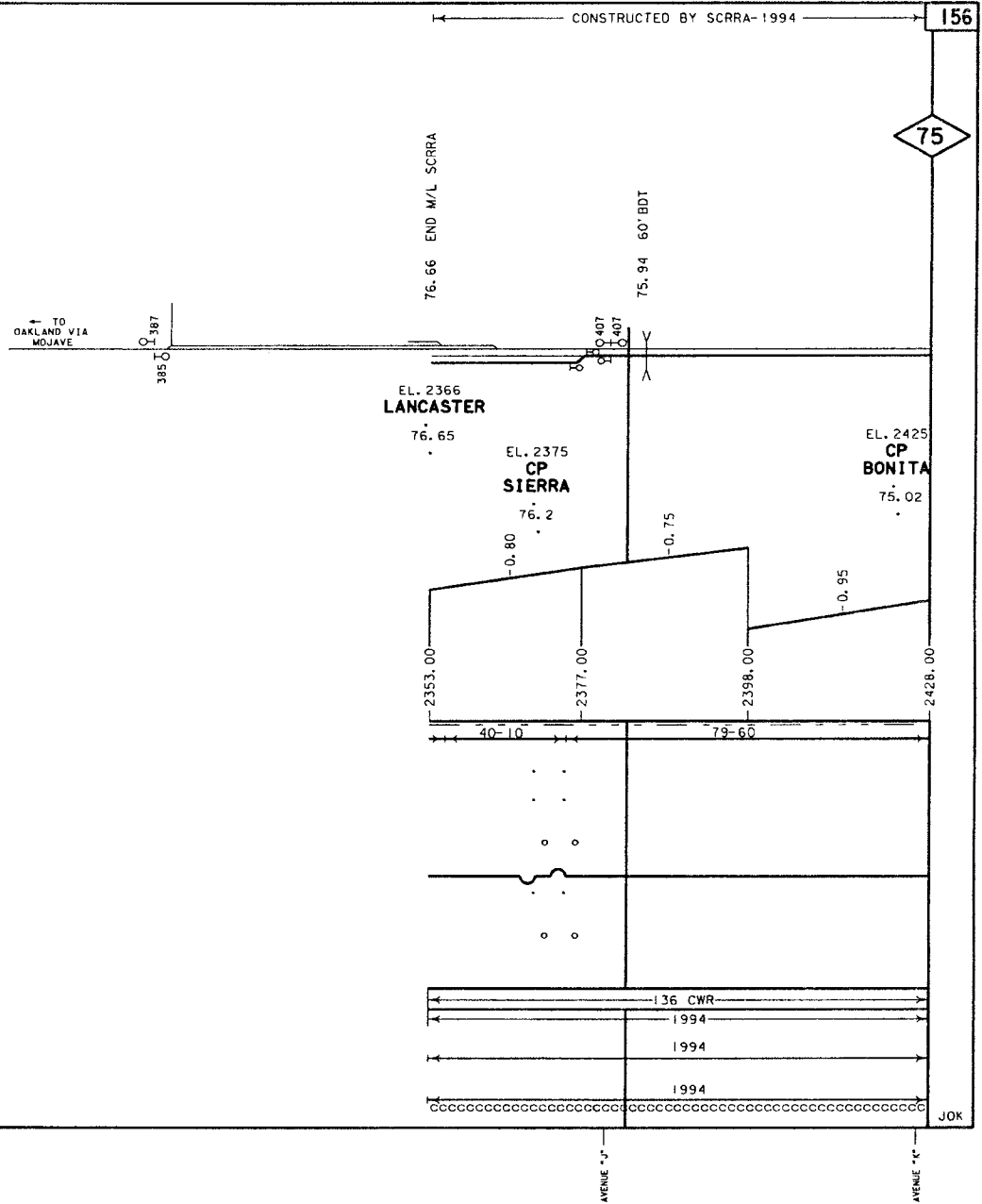
DEGREE OF CURVE

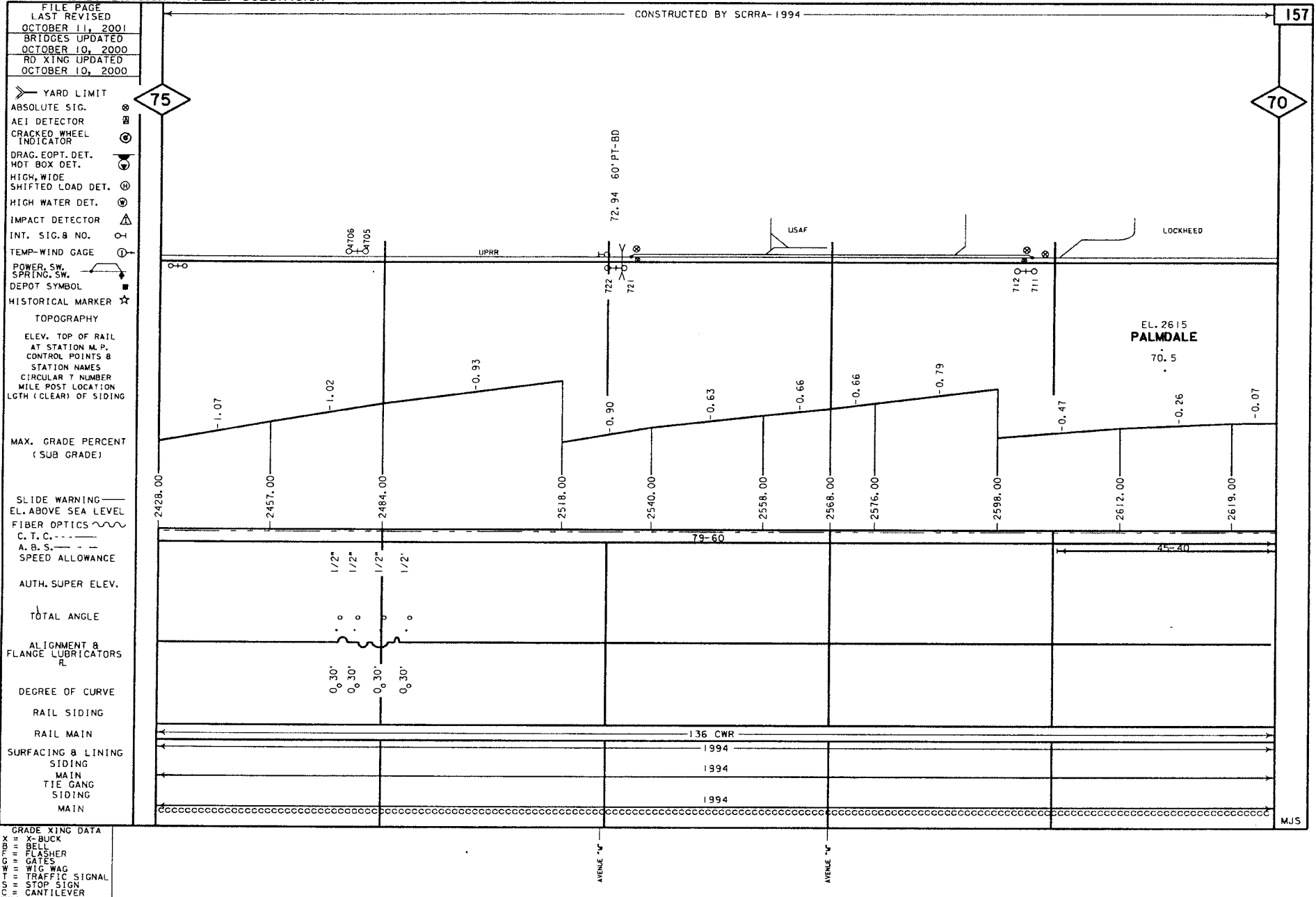
RAIL SIDING

RAIL MAIN

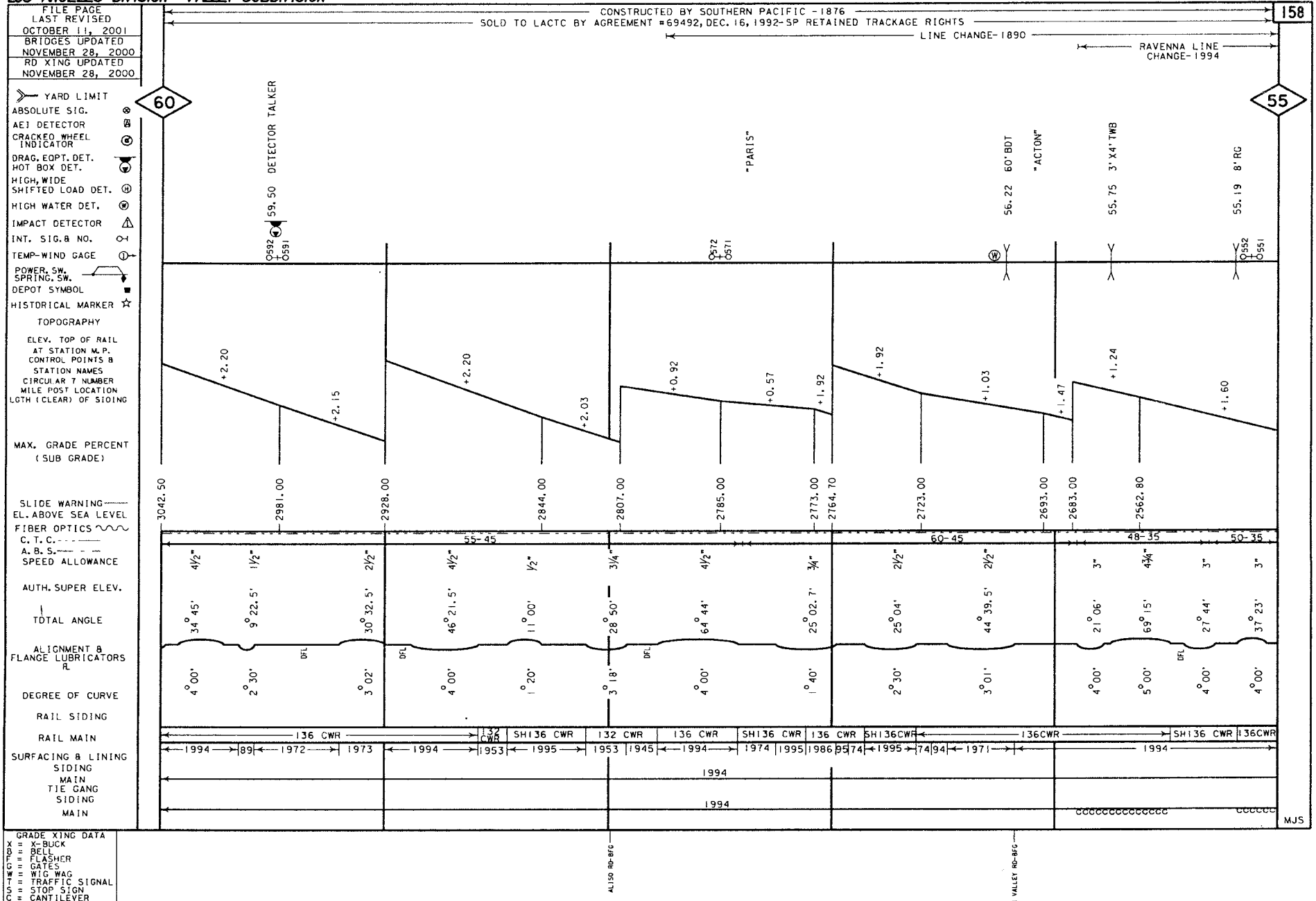
SURFACING & LINING
SIOING
MAIN
TIE GANG
SIDING
MAIN

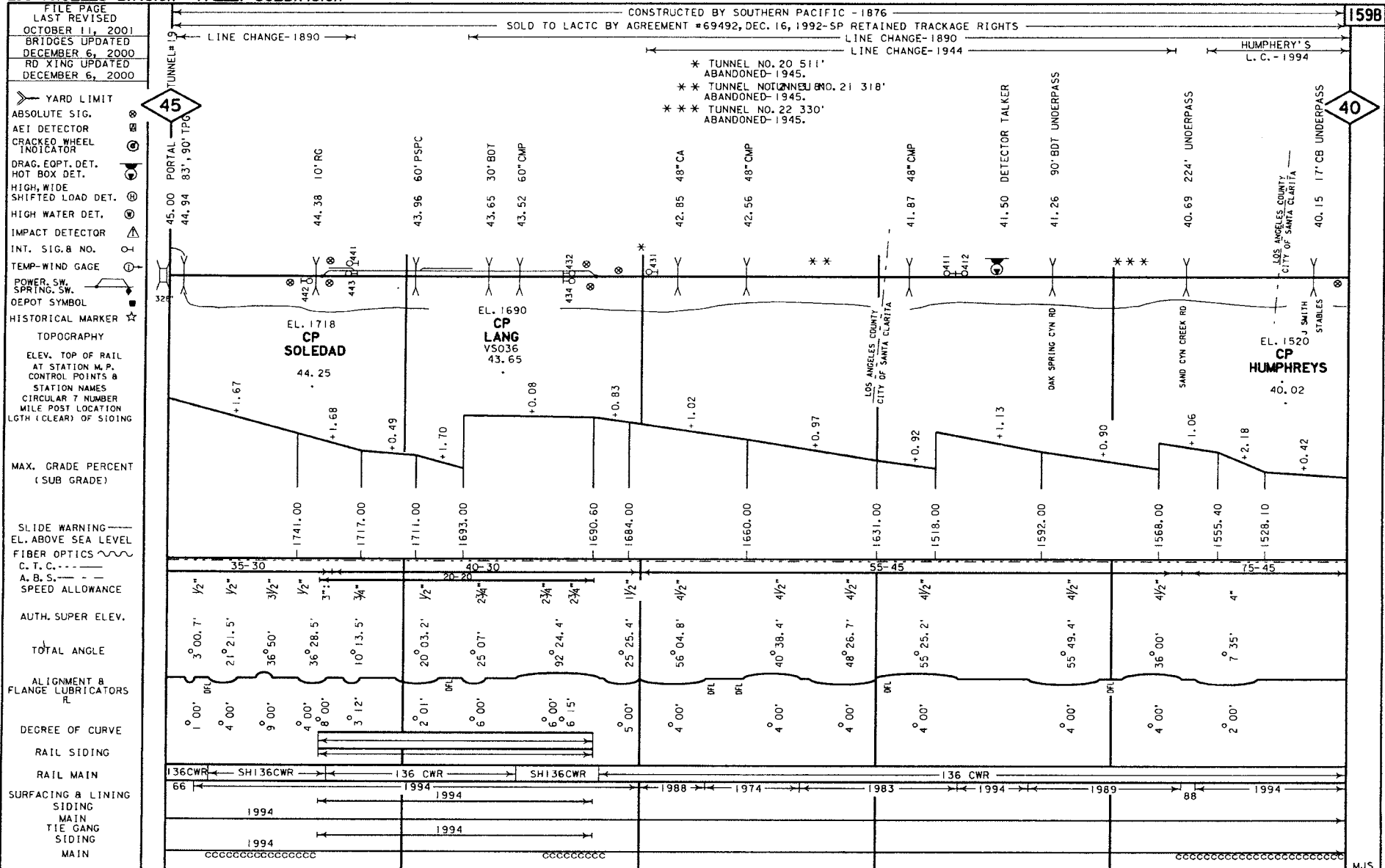
GRADE XING DATA
X-BUCK
BELL
FLASHER
GATES
W/O MAG
TRAFFIC SIGNAL
STOP SIGN
CANTILEVER





- FILE PAGE
LAST REVISED
OCTOBER 11, 2001
BRIDGES UPDATED
OCTOBER 10, 2000
ROAD XING UPDATED
OCTOBER 10, 2000
- YARD LIMIT
- ABSOLUTE SIG. ⊗
AEI DETECTOR ⊗
CRACKED WHEEL INDICATOR ⊗
DRAG, EOPT. DET. ⊗
HOT BOX DET. ⊗
HIGH, WIDE SHIFTED LOAD DET. ⊗
HIGH WATER DET. ⊗
IMPACT DETECTOR ⊗
INT. SIG. B NO. ⊗
TEMP. WIND GAGE ⊗
- POWER SW. ⊗
SPRING SW. ⊗
DEPOT SYMBOL ⊗
HISTORICAL MARKER ☆
- TOPOGRAPHY
ELEV. TOP OF RAIL AT STATION M.P.
CONTROL POINTS B
STATION NAMES
CIRCULAR T NUMBER
MILE POST LOCATION
LGTH (CLEAR) OF SIDING
- MAX. GRADE PERCENT (SUB GRADE)
- SLIDE WARNING —
EL. ABOVE SEA LEVEL
FIBER OPTICS ~~~~~
C. T. C. ---
A. B. S. ---
SPEED ALLOWANCE
- AUTH. SUPER ELEV.
- TOTAL ANGLE
- ALIGNMENT & FLANGE LUBRICATORS R
- DEGREE OF CURVE
- RAIL SIDING
- RAIL MAIN
- SURFACING & LINING
SIDING
MAIN
TIE GANG
SIDING
MAIN
- GRADE XING DATA
X-BUCK
BELL
FLASHER
GATES
WIG WAG
TRAFFIC SIGNAL
STOP SIGN
CANTILEVER





GRADE XING DATA
X = X-BUCK
B = BEL
F = FLASHER
G = GATES
W = WIG WAG
T = TRAFFIC SIGNAL
S = STOP SIGN
C = CANTILEVER

LANG STA. RD-BFG

PRIVATE

PRIVATE-S

MJS

FILE PAGE
LAST REVISED
MAY 22, 2002
BRIDGES UPDATED
DECEMBER 6, 2000
RD KING UPDATED
DECEMBER 6, 2000

CONSTRUCTED BY SOUTHERN PACIFIC- 1875
SOLD TO LACTC BY AGREEMENT #69492, DEC. 16, 1992-SP RETAINED TRackage RIGHTS

SYLMAR
L.C. - 1994

- YARD LIMIT
- ABSOLUTE SIG.
- AE1 DETECTOR
- CRACKED WHEEL INDICATOR
- DRAG. EOPT. DET.
- HOT BOX DET.
- HIGH, WIDE SHIFTED LOAD DET.
- HIGH WATER DET.
- IMPACT DETECTOR
- INT. SIG. & NO.
- TEMP-WIND GAGE
- POWER SW. SPRING SW.
- DEPOT SYMBOL
- HISTORICAL MARKER

30

29.80 DETECTOR TALKER

"WALTZ JCT"
28.49 8' RG
28.39 2-8' RC

27.95 PORTAL TUNNEL #25

26. XX PORTAL TUNNEL #25

OVERHEAD VIADUCT
26.73
26.70
26.63
26.61
26.59

SIERRA HWY
26.42
26.41

"TUNNEL"
26.15 64" CP
"MAGAZINE"

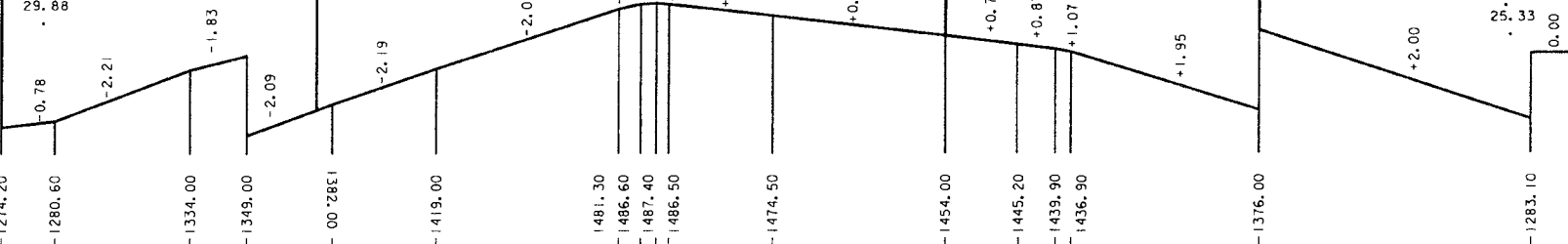
OVERHEAD VIADUCT
25.92
25.78
25.71 20' CA

25.34 2-12' X10' CBC
25.31 OVERHEAD VIADUCT
25.25 8' SPC
25.23 6' X5' CBC
25.20 PS # HITTO

25

TOPOGRAPHY
ELEV. TOP OF RAIL
AT STATION M.P.
CONTROL POINTS &
STATION NAMES
CIRCULAR 7 NUMBER
MILE POST LOCATION
LGTH (CLEAR) OF SIDING

EL. 1280
NEWHALL

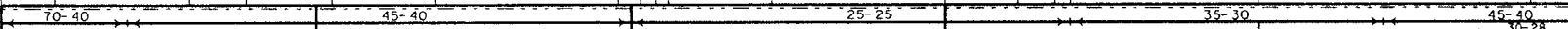


MAX. GRADE PERCENT (SUB GRADE)

SLIDE WARNING
EL. ABOVE SEA LEVEL

FIBER OPTICS
C. T. C. ---
A. B. S. ---

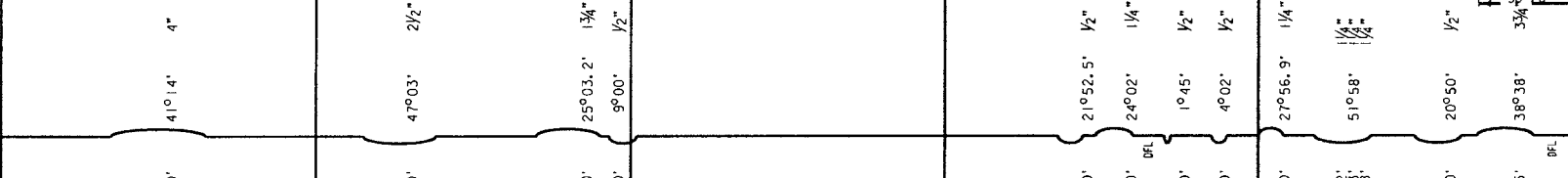
SPEED ALLOWANCE



AUTH. SUPER ELEV.

TOTAL ANGLE

ALIGNMENT 8
FLANGE LUBRICATORS

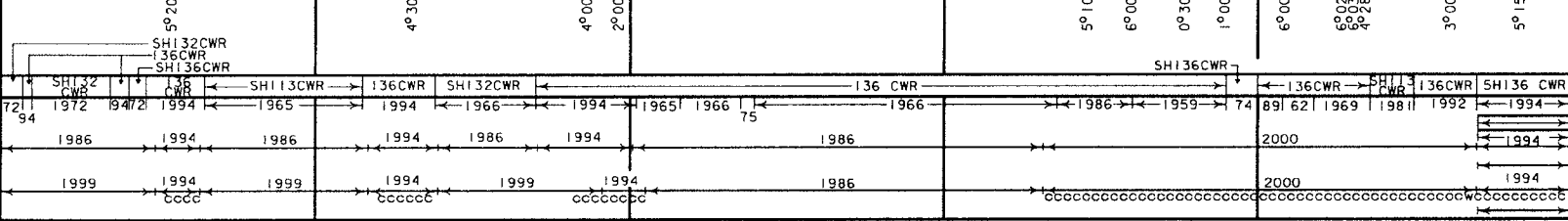


DEGREE OF CURVE

RAIL SIDING

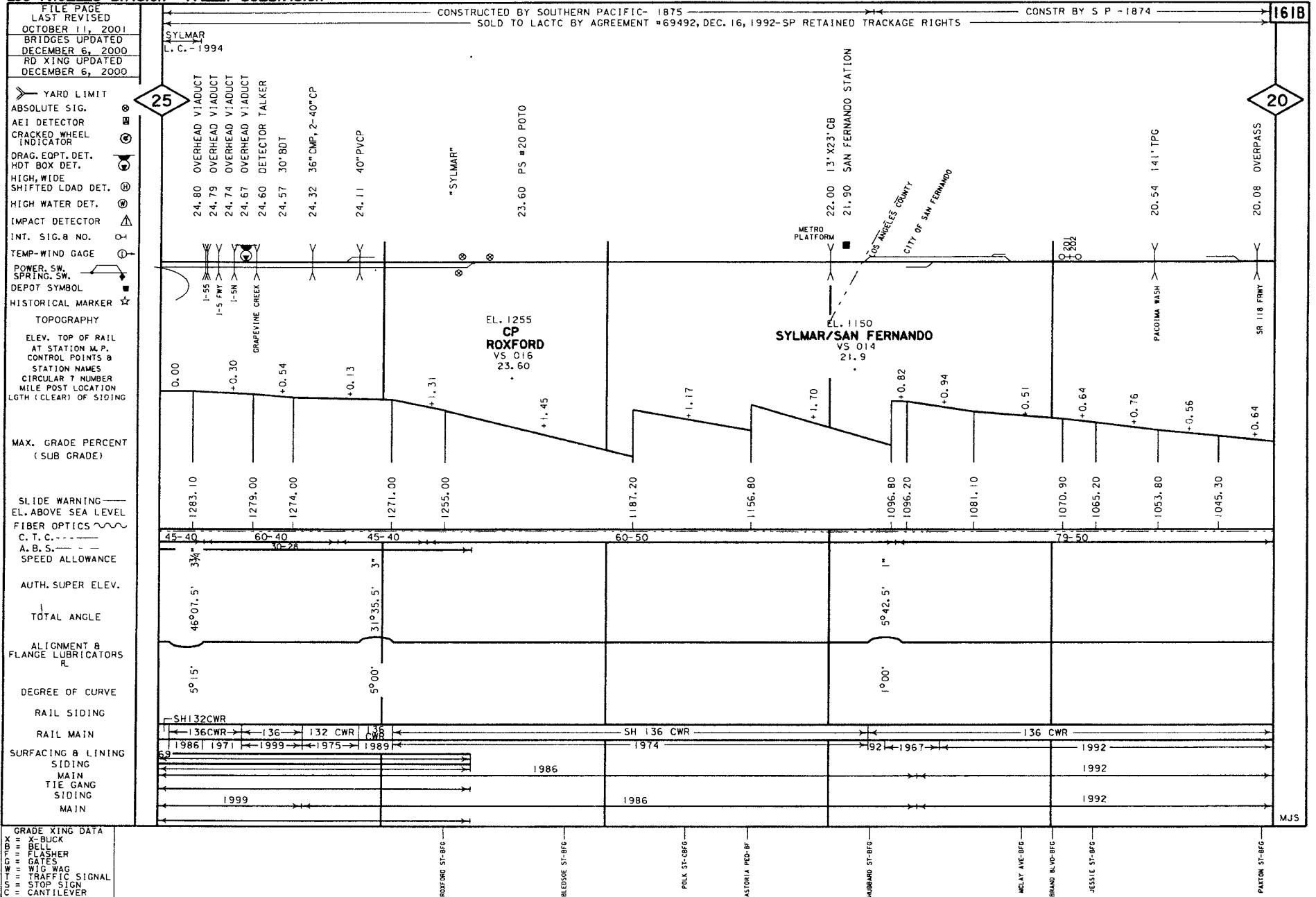
RAIL MAIN

SURFACING & LINING
SIDING
MAIN
TIE GANG
SIDING
MAIN



GRADE XING DATA
X-BUCK
BELL
FLASHER
GATES
WIG WAG
TRAFFIC SIGNAL
STOP SIGN
CANTILEVER





FILE PAGE
LAST REVISED
JUNE 13, 2002
BRIDGES UPDATED
DECEMBER 6, 2000
RD XING UPDATED
DECEMBER 6, 2000

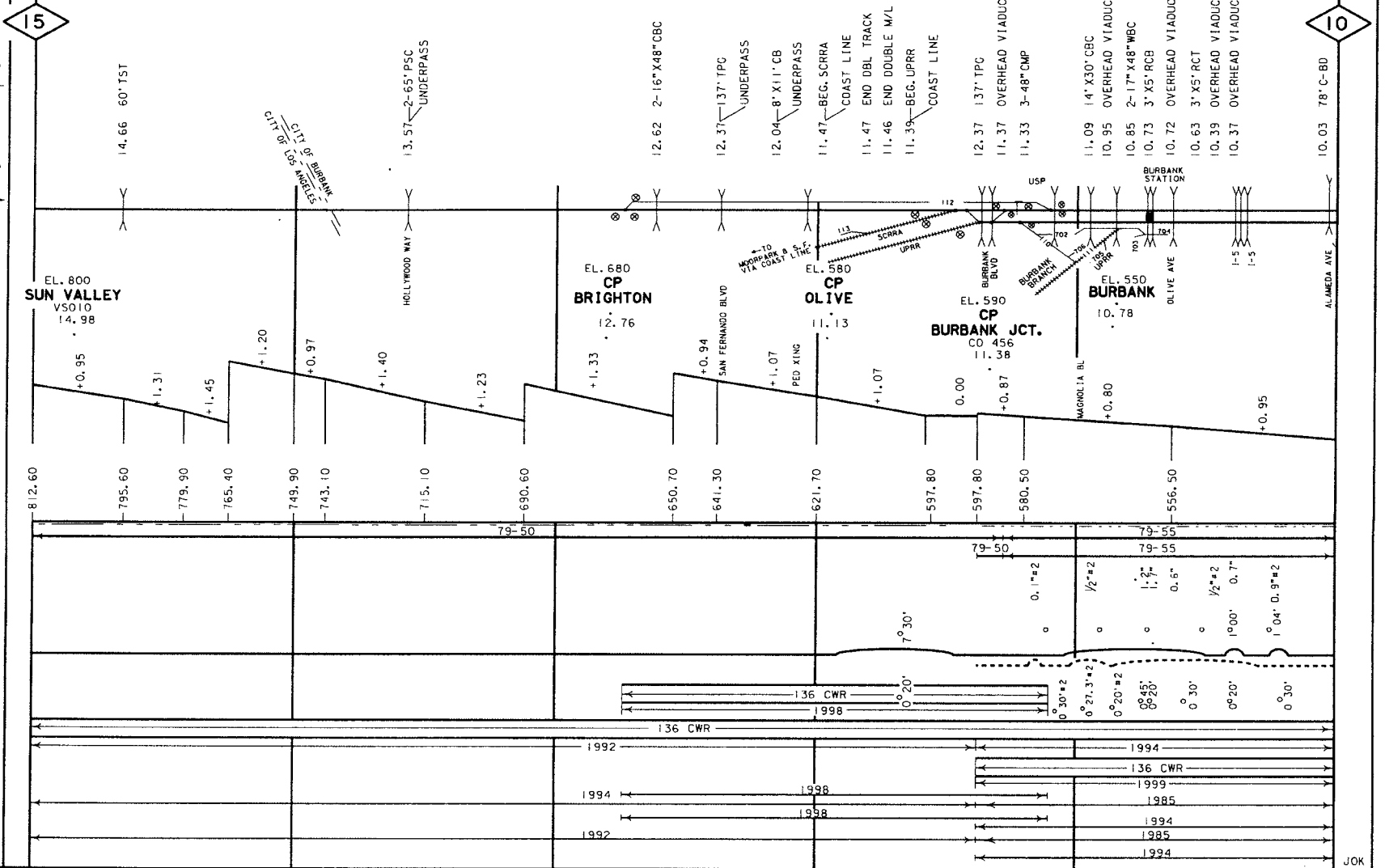
SOLD TO LACTC BY AGREEMENT #69492, DEC. 16, 1992-SP RETAINED TRACKAGE RIGHTS
CONSTRUCTED BY SOUTHERN PACIFIC -1874

* SHARED USE AGREEMENT BETWEEN SPRR AND LACTC-APRIL 18, 1991
DISPATCHING AND MAINTENANCE BY SCRRA, DECEMBER 1992
** SPRR ACQUIRED BY UPRR-STB FO #32760 EFF SEPT. 11, 1996

LINE CHANGE TRK #2-1993

163

- YARD LIMIT
- ABSOLUTE SIG.
- AE1 DETECTOR
- CRACKED WHEEL INDICATOR
- ORAG. EOPT. DET. HOT BOX DET.
- HIGH, WIDE SHIFTED LOAD DET.
- HIGH WATER DET.
- IMPACT DETECTOR
- INT. SIG. & NO.
- TEMP-WIND GAGE
- POWER SW. SPRING SW.
- DEPOT SYMBOL
- HISTORICAL MARKER
- TOPOGRAPHY
- ELEV. TOP OF RAIL AT STATION M.P. CONTROL POINTS & STATION NAMES
- CIRCULAR CURVE NUMBER
- MILE POST LOCATION
- LGTH (CLEAR) OF SIDING
- MAX. GRADE PERCENT (SUB GRADE)
- SLIDE WARNING
- ELEV. ABOVE SEA LEVEL
- FIBER OPTICS
- C. T. C. ---
- A. B. S. ---
- SPEED ALLOWANCE
- AUTH. SUPER ELEV.
- TOTAL ANGLE
- ALIGNMENT & FLANGE LUBRICATORS
- DEGREE OF CURVE
- RAIL SIDING
- RAIL MAIN
- SURFACING & LINING
- SIDING
- MAIN
- TIE GANG
- SIDING
- MAIN



GRADE XING DATA
X-BUCK
BELL
FLASHER
GATES
WIG WAG
TRAFFIC SIGNAL
STOP SIGN
CANTILEVER

ARVILLA AVE-BFG

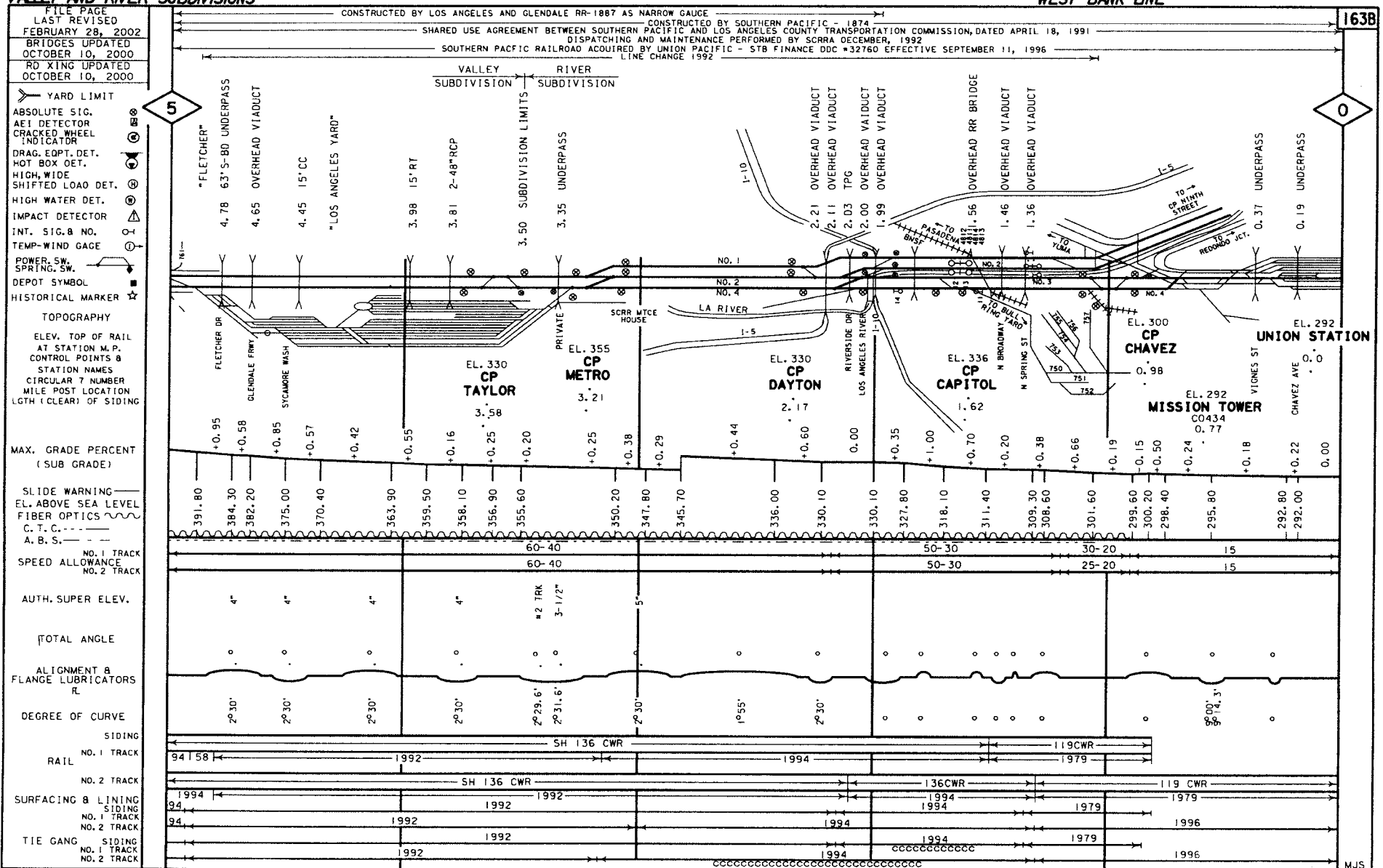
BUENA VIST ST-BFG

PED WALK-BFG

JOK

**SOUTHERN CALIFORNIA REGIONAL RAIL AUTHORITY (SCRRA) METROLINK
VALLEY AND RIVER SUBDIVISIONS**

**LOS ANGELES DIVISION
WEST BANK LINE**



GRADE XING DATA

X-BUCK
BELL
FLASHER
GATES
WIG WAG
TRAFFIC SIGNAL
STOP SIGN
CANTILEVER

RAIL	NO. 1 TRACK	94 58	1992	SH 136 CWR	1994	119CWR	1979
SURFACING & LINING	NO. 1 TRACK	94	1994	SH 136 CWR	1992	136CWR	119 CWR
TIE GANG	NO. 1 TRACK	94	1992	1992	1994	1994	1979
	NO. 2 TRACK	94	1992	1992	1994	1994	1979
	NO. 1 TRACK		1992	1992	1994	1994	1979
	NO. 2 TRACK		1992	1992	1994	1994	1979

