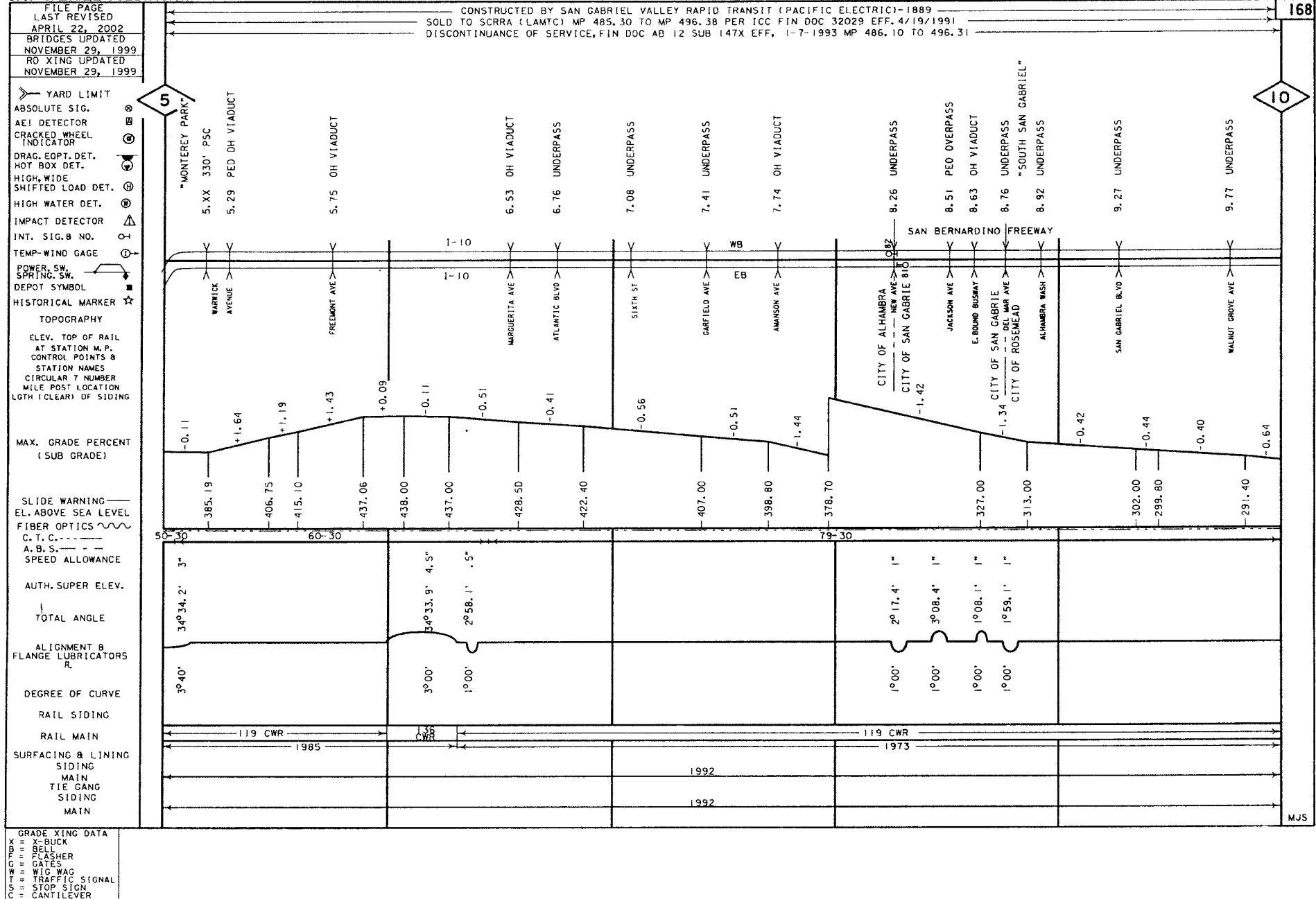


GRADE XING DATA
 X = X-BUCK
 B = BELL
 F = FLASHER
 G = GATES
 W = WIG WAG
 T = TRAFFIC SIGNAL
 S = STOP SIGN
 C = CANTILEVER

MJS



MJS

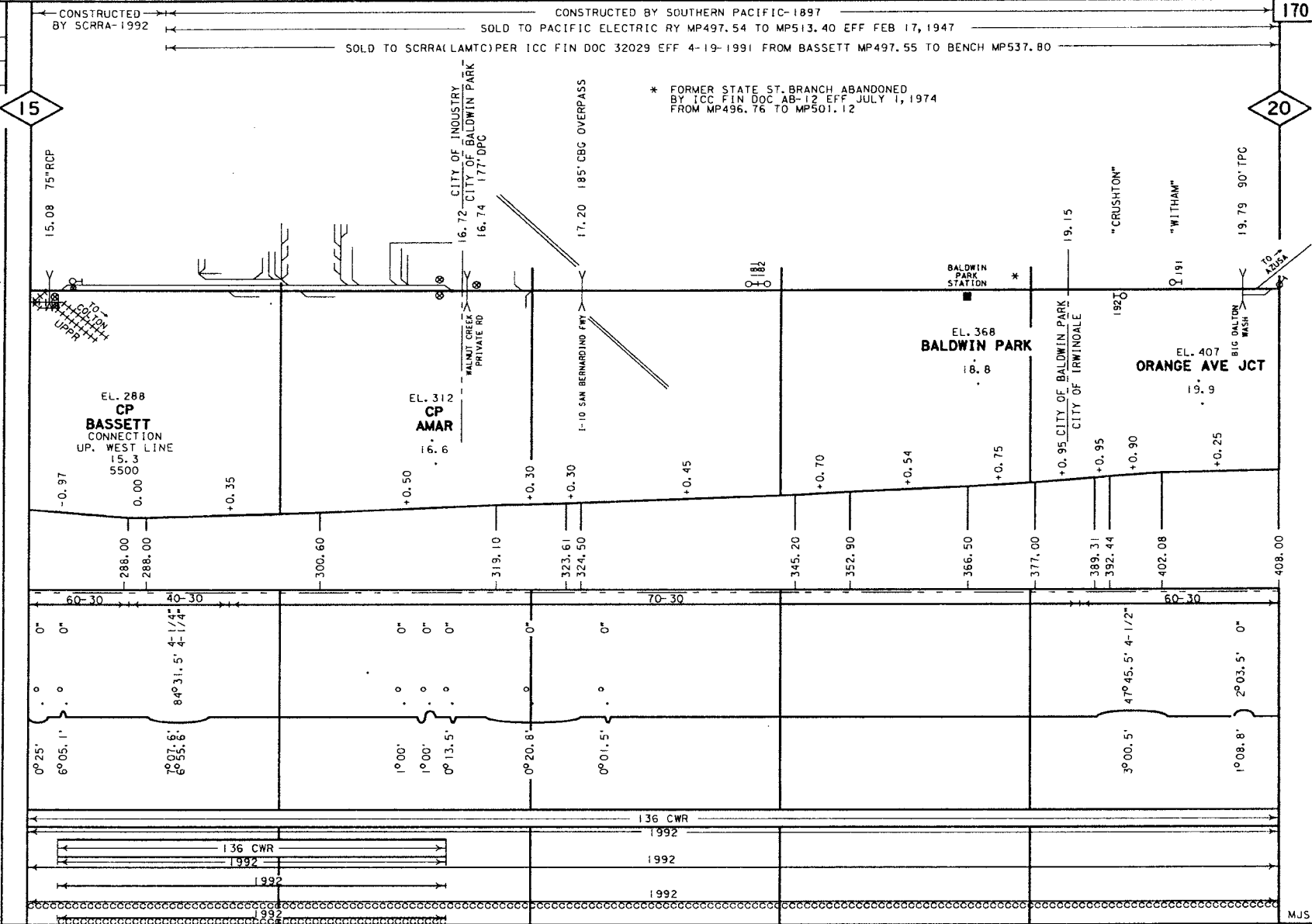
**SOUTHERN CALIFORNIA RAILROAD AUTHORITY
SAN GABRIEL SUBDIVISION**

**LOS ANGELES DIVISION
SAN GABRIEL SUBDIVISION**

FILE PAGE
LAST REVISED
APRIL 22, 2002
BRIDGES UPDATED
NOVEMBER 29, 1999
RD XING UPDATED
NOVEMBER 29, 1999

CONSTRUCTED BY SCRRRA-1992
CONSTRUCTED BY SOUTHERN PACIFIC-1897
SOLD TO PACIFIC ELECTRIC RY MP497.54 TO MP513.40 EFF FEB 17, 1947
SOLD TO SCRRRA(LAMTC)PER ICC FIN DOC 32029 EFF 4-19-1991 FROM BASSETT MP497.55 TO BENCH MP537.80

- YARD LIMIT
- ABSOLUTE SIG.
- AEI DETECTOR
- CRACKED WHEEL INDICATOR
- DRAG. EOPT. DET.
- HOT BOX DET.
- HIGH, WIDE SHIFTED LOAD DET.
- HIGH WATER DET.
- IMPACT DETECTOR
- INT. SIG. B NO.
- TEMP-WIND GAGE
- POWER SW.
- SPRING SW.
- DEPOT SYMBOL
- HISTORICAL MARKER
- TOPOGRAPHY
 - ELEV. TOP OF RAIL AT STATION M.P.
 - CONTROL POINTS B
 - STATION NAMES
 - CIRCULAR T NUMBER
 - MILE POST LOCATION
 - LGTH (CLEAR) OF SIDING
- MAX. GRADE PERCENT (SUB GRADE)
- SLIDE WARNING
- E.L. ABOVE SEA LEVEL
- FIBER OPTICS
- C. T. C.
- A. B. S.
- SPEED ALLOWANCE
- AUTH. SUPER ELEV.
- TOTAL ANGLE
- ALIGNMENT & FLANGE LUBRICATORS
- DEGREE OF CURVE
- RAIL SIDING
- RAIL MAIN
- SURFACING & LINING SIDING
- MAIN
- TIE GANG SIDING
- MAIN



* FORMER STATE ST. BRANCH ABANDONED BY ICC FIN DOC AB-12 EFF JULY 1, 1974 FROM MP496.76 TO MP501.12

GRADE XING DATA
X-BUCK
BELL
FLASHER
GATES
WIG WAG
TRAFFIC SIGNAL
STOP SIGN
CANTILEVER

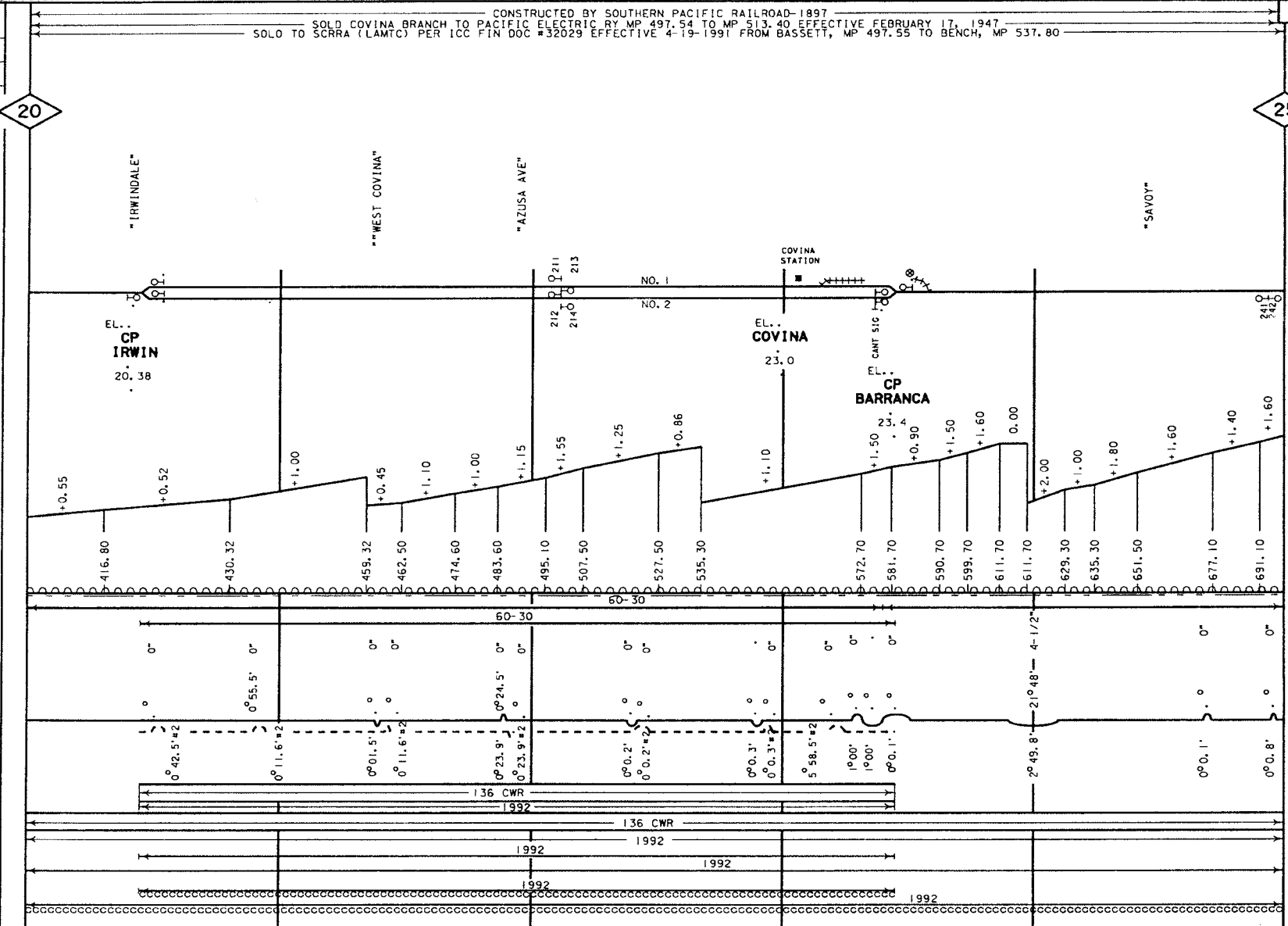
TEMPLE AVE-X
AMAR AVE-X
VIRGINIA AVE-BFC
FRANCISSON AVE-BFC
FOSTER AVE-X
MERCEDE AVE-CBFC
MCDEVITT ST-BF
PACIFIC AVE-BF
RAMONA BLVD
ABUSA CANYON RD-CBFC

FILE PAGE
LAST REVISED
APRIL 22, 2002
BRIDGES UPDATED
NOVEMBER 29, 1999
ROADWAYS UPDATED
NOVEMBER 29, 1999

CONSTRUCTED BY SOUTHERN PACIFIC RAILROAD-1897
SOLD COVINA BRANCH TO PACIFIC ELECTRIC BY MP 497.54 TO MP 513.40 EFFECTIVE FEBRUARY 17, 1947
SOLO TO SCRRA (LAMTC) PER ICC FIN DOC #32029 EFFECTIVE 4-19-1991 FROM BASSETT, MP 497.55 TO BENCH, MP 537.80

171

- YARD LIMIT
- ABSOLUTE SIG.
- AEI DETECTOR
- CRACKED WHEEL INDICATOR
- DRAG. EOPT. DET.
- HOT BOX DET.
- HIGH, WIDE SHIFTED LOAD DET.
- HIGH WATER DET.
- IMPACT DETECTOR
- INT. SIG. & NO.
- TEMP-WIND GAGE
- POWER, SW. SPRING, SW.
- DEPOT SYMBOL
- HISTORICAL MARKER
- TOPOGRAPHY
 - ELEV. TOP OF RAIL AT STATION M.P.
 - CONTROL POINTS & STATION NAMES
 - CIRCULAR 7 NUMBER
 - MILE POST LOCATION
 - LGTH (CLEAR) OF SIGHTING
- MAX. GRADE PERCENT (SUB GRADE)
- SLIDE WARNING
EL. ABOVE SEA LEVEL
- FIBER OPTICS
C. T. C.
- A. B. S.
- SPEED ALLOWANCE
- AUTH. SUPER ELEV.
- TOTAL ANGLE
- ALIGNMENT & FLANGE LUBRICATORS
- DEGREE OF CURVE
- RAIL SIDING
- RAIL MAIN
- SURFACING & LINING SIGHTING
- MAIN
- TIE GANG SIDING
- MAIN



GRADE XING DATA
X-BUCK
BELL
FLASHER
GATES
WIG WAG
TRAFFIC SIGNAL
STOP SIGN
CANTILEVER

- IRWINDALE AVE-CBFG
- VINCENT AVE-CBFG
- LARK ELLEN AVE-CBFG
- AZUSA AVE-CBFG
- HOLLENBECK AVE-CBFG
- CITRUS AVE-CBFG
- BARRANCA AVE-CBFG
- GRAND AVE-CBFG
- CLENDON AVE-CBFG
- CYPRESS ST BARRANCA AVE-CBFG
- BOWLE COTE AVE-CBFG

MJS

**SOUTHERN CALIFORNIA RAILROAD AUTHORITY
SAN GABRIEL SUBDIVISION**

**LOS ANGELES DIVISION
SAN GABRIEL SUBDIVISION**

